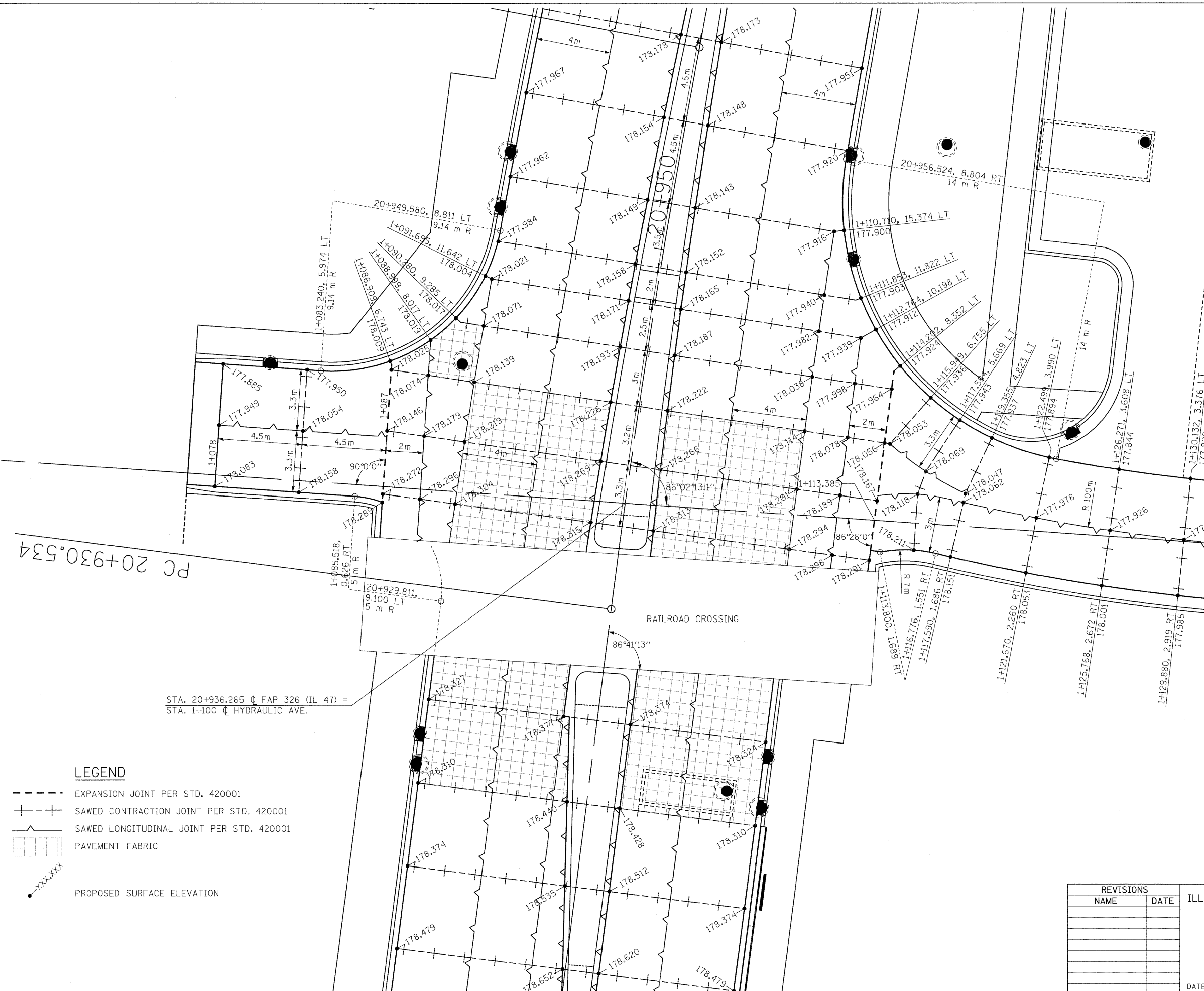


F.A.P. RTE.	SECTION	COUNTY	TOTAL SHEETS	SHEET NO.
326	(SCS,13C,108,109)R	KENDALL	931	535
STA.		TO STA.		
FED. ROAD DIST. NO.		ILLINOIS FED. AID PROJECT		



PC 20+930.534

STA. 20+936.265  $\nabla$  FAP 326 (IL 47) =  
STA. 1+100  $\nabla$  HYDRAULIC AVE.

**LEGEND**

- EXPANSION JOINT PER STD. 420001
- SAWED CONTRACTION JOINT PER STD. 420001
- SAWED LONGITUDINAL JOINT PER STD. 420001
- PAVEMENT FABRIC
- PROPOSED SURFACE ELEVATION

REVISIONS	
NAME	DATE

ILLINOIS DEPARTMENT OF TRANSPORTATION  
**INTERSECTION DETAIL**  
**FAP 327 (IL 47) &**  
**HYDRAULIC AVENUE**  
 DRAWN BY EDW  
 CHECKED BY  
 DATE

FILE: 5351D\_HydAve.dgn  
 PLOTTED: 8/11/2011

HMG JOB NO. 5122