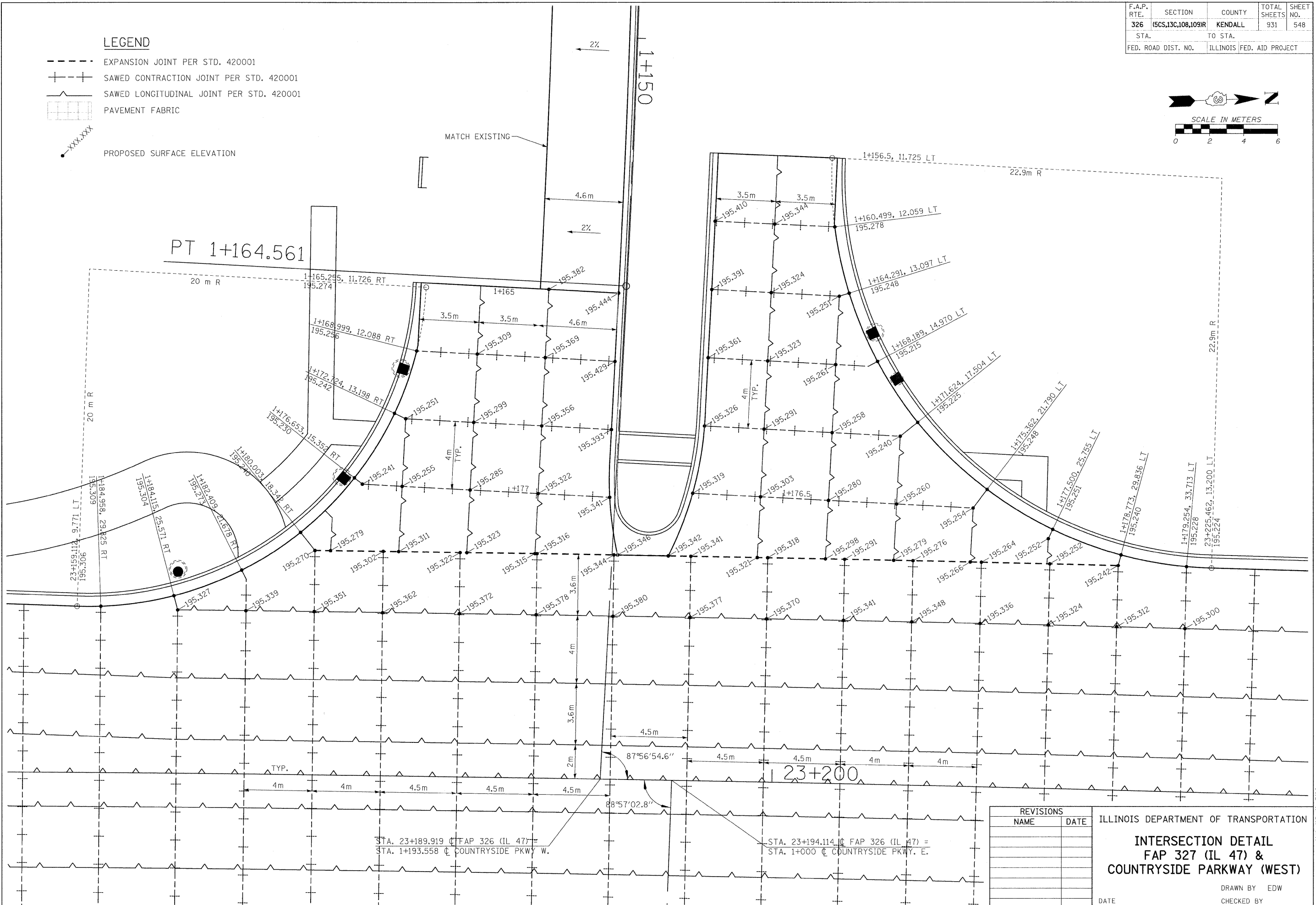
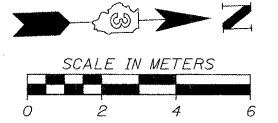


|                     |                    |                  |              |           |
|---------------------|--------------------|------------------|--------------|-----------|
| F.A.P. RTE.         | SECTION            | COUNTY           | TOTAL SHEETS | SHEET NO. |
| 326                 | (5CS,13C,108,109)R | KENDALL          | 931          | 548       |
| STA.                | TO STA.            |                  |              |           |
| FED. ROAD DIST. NO. | ILLINOIS           | FED. AID PROJECT |              |           |

**LEGEND**

- - - EXPANSION JOINT PER STD. 420001
- + + + SAWED CONTRACTION JOINT PER STD. 420001
- / - SAWED LONGITUDINAL JOINT PER STD. 420001
- [Grid] PAVEMENT FABRIC
- XXX.XXX PROPOSED SURFACE ELEVATION



| REVISIONS |      |
|-----------|------|
| NAME      | DATE |
|           |      |
|           |      |
|           |      |
|           |      |
|           |      |
|           |      |
|           |      |
|           |      |
|           |      |
|           |      |

ILLINOIS DEPARTMENT OF TRANSPORTATION

**INTERSECTION DETAIL**  
**FAP 327 (IL 47) &**  
**COUNTRYSIDE PARKWAY (WEST)**

DRAWN BY EDW  
 CHECKED BY  
 DATE

FILE: 5481D\_CntyPkwy.dgn  
 PLOTTED: 8/11/2011

HMG JOB NO. 5122