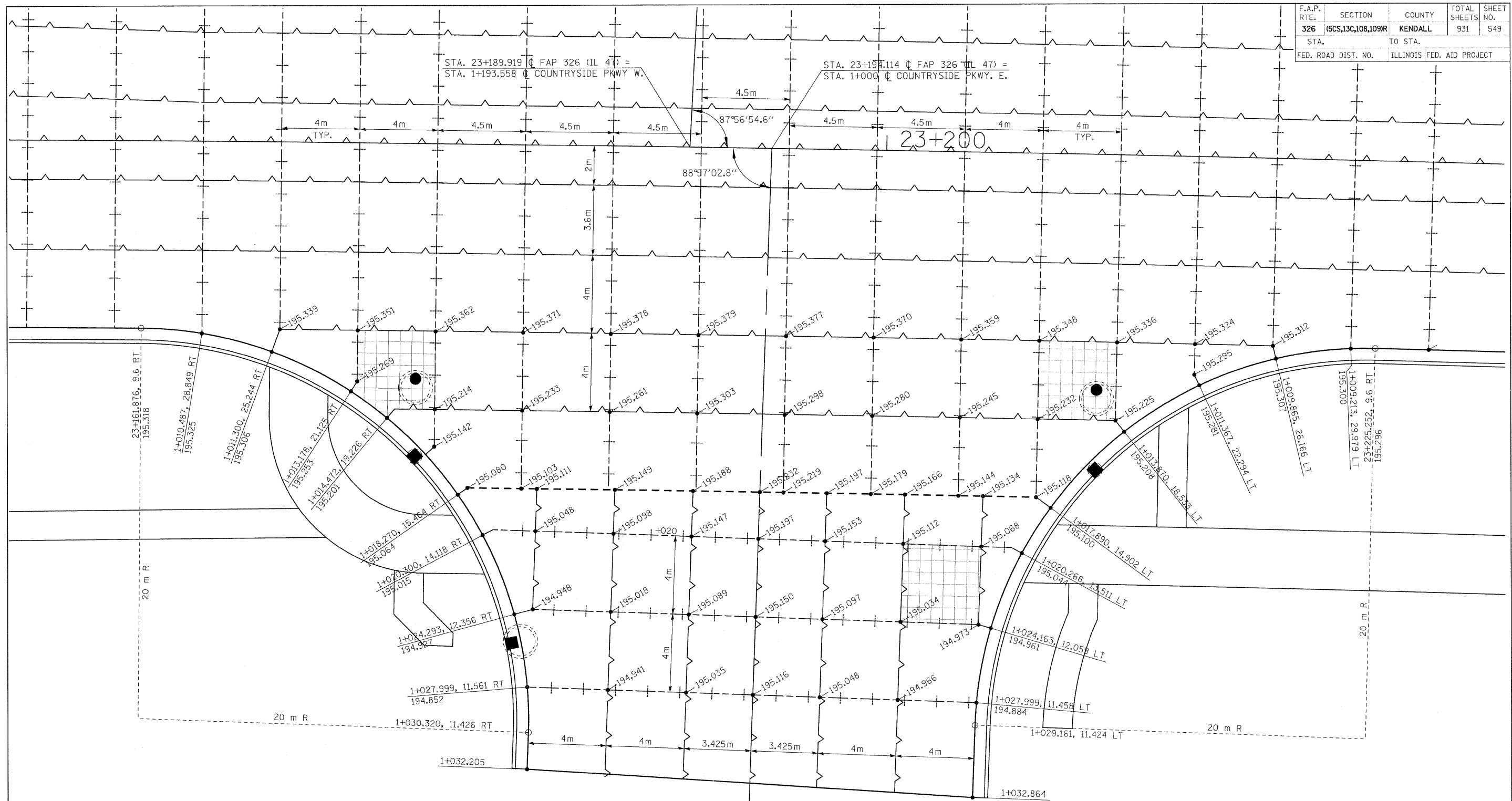
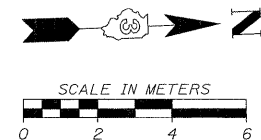


F.A.P. RTE.	SECTION	COUNTY	TOTAL SHEETS	SHEET NO.
326	(6CS,13C,108,109)R	KENDALL	931	549
STA.		TO STA.		
FED. ROAD DIST. NO.		ILLINOIS	FED. AID PROJECT	



LEGEND

- EXPANSION JOINT PER STD. 420001
- +--+ SAWED CONTRACTION JOINT PER STD. 420001
- SAWED LONGITUDINAL JOINT PER STD. 420001
- [Grid Pattern] PAVEMENT FABRIC
- XXX.XXX PROPOSED SURFACE ELEVATION



REVISIONS		ILLINOIS DEPARTMENT OF TRANSPORTATION
NAME	DATE	
		INTERSECTION DETAIL FAP 327 (IL 47) & COUNTRYSIDE PARKWAY (EAST)
DATE		DRAWN BY EDW CHECKED BY

FILE: 649ID_CntyPkwy.dgn
PLOTTED: 8/11/2011

HMG JOB NO. 5122