

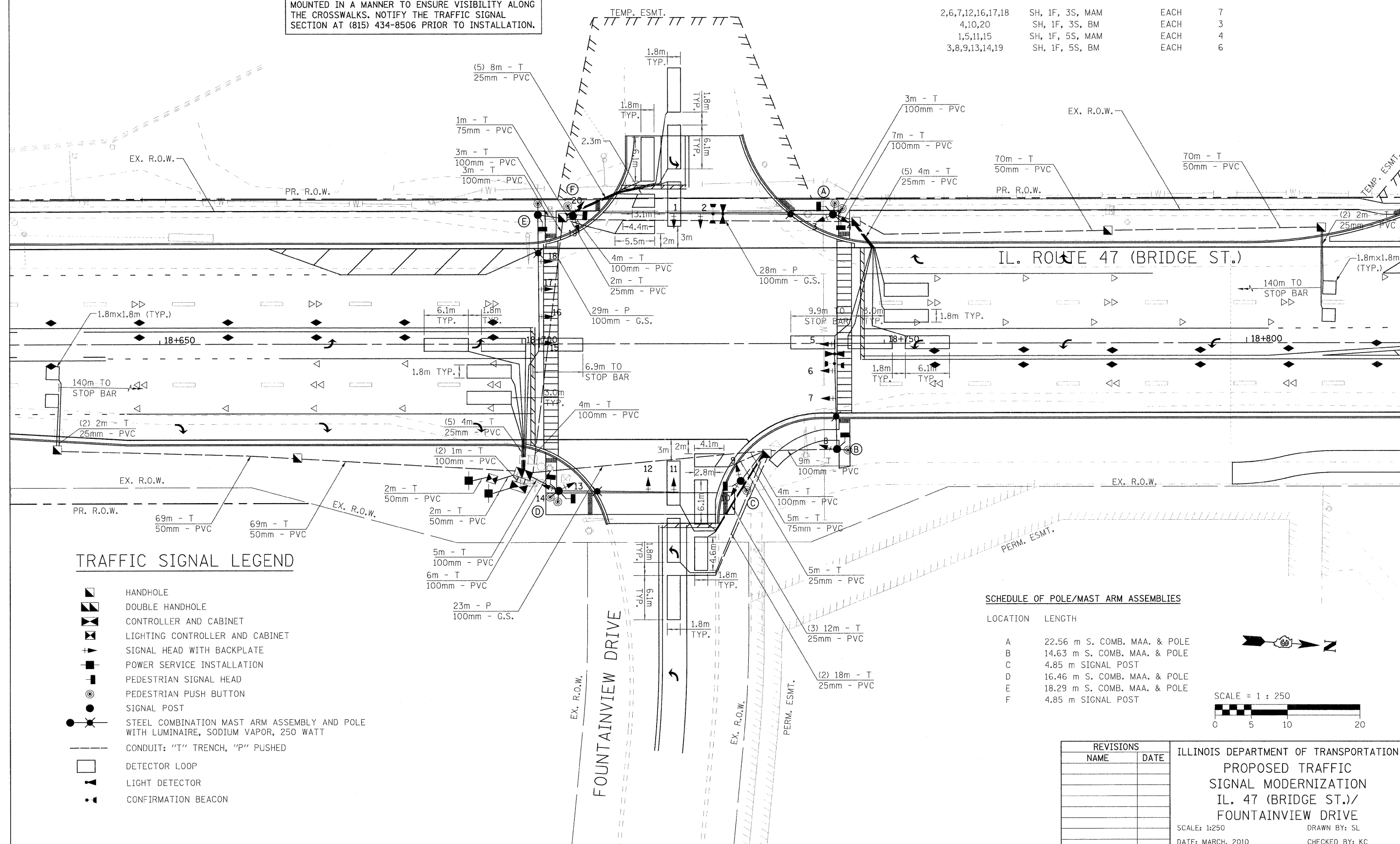
F.A.P. RTE.	SECTION	COUNTY	TOTAL SHEETS	SHEET NO.
326	*	KENDALL	931	583
STA. N/A		TO STA. N/A		
FED. ROAD DIST. NO. 5		ILLINOIS FED. AID PROJECT		
*15CS, 13C, 108, 1091R				

NOTIFY THE TRAFFIC SIGNAL SECTION AT (815) 434-8506 72 HOURS IN ADVANCE TO REDESIGN THE DETECTOR LOOPS, IF POSSIBLE, TO AVOID CONSTRUCTION JOINTS.

ALL PEDESTRIAN SIGNAL HEADS SHALL BE BRACKET MOUNTED IN A MANNER TO ENSURE VISIBILITY ALONG THE CROSSWALKS. NOTIFY THE TRAFFIC SIGNAL SECTION AT (815) 434-8506 PRIOR TO INSTALLATION.

SCHEDULE OF SIGNAL HEAD QUANTITIES

LOCATION	ITEM	UNIT	QUANTITY
2,6,7,12,16,17,18	SH, 1F, 3S, MAM	EACH	7
4,10,20	SH, 1F, 3S, BM	EACH	3
1,5,11,15	SH, 1F, 5S, MAM	EACH	4
3,8,9,13,14,19	SH, 1F, 5S, BM	EACH	6

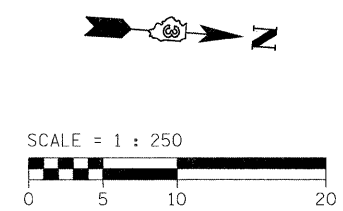


TRAFFIC SIGNAL LEGEND

- HANDHOLE
- DOUBLE HANDHOLE
- CONTROLLER AND CABINET
- LIGHTING CONTROLLER AND CABINET
- SIGNAL HEAD WITH BACKPLATE
- POWER SERVICE INSTALLATION
- PEDESTRIAN SIGNAL HEAD
- PEDESTRIAN PUSH BUTTON
- SIGNAL POST
- STEEL COMBINATION MAST ARM ASSEMBLY AND POLE WITH LUMINAIRE, SODIUM VAPOR, 250 WATT
- CONDUIT: "T" TRENCH, "P" PUSHED
- DETECTOR LOOP
- LIGHT DETECTOR
- CONFIRMATION BEACON

SCHEDULE OF POLE/MAST ARM ASSEMBLIES

LOCATION	LENGTH
A	22.56 m S. COMB. MAA. & POLE
B	14.63 m S. COMB. MAA. & POLE
C	4.85 m SIGNAL POST
D	16.46 m S. COMB. MAA. & POLE
E	18.29 m S. COMB. MAA. & POLE
F	4.85 m SIGNAL POST



REVISIONS		ILLINOIS DEPARTMENT OF TRANSPORTATION PROPOSED TRAFFIC SIGNAL MODERNIZATION IL. 47 (BRIDGE ST.)/ FOUNTAINVIEW DRIVE
NAME	DATE	
		SCALE: 1:250 DATE: MARCH, 2010 DRAWN BY: SL CHECKED BY: KC

PLOT DATE = 8/11/2011
FILE NAME = h:\5122\design\5831\fontainview*.prop.dgn
PLOT SCALE = 6:3500 m / IN.
USER NAME = JOSEPHDESCH.