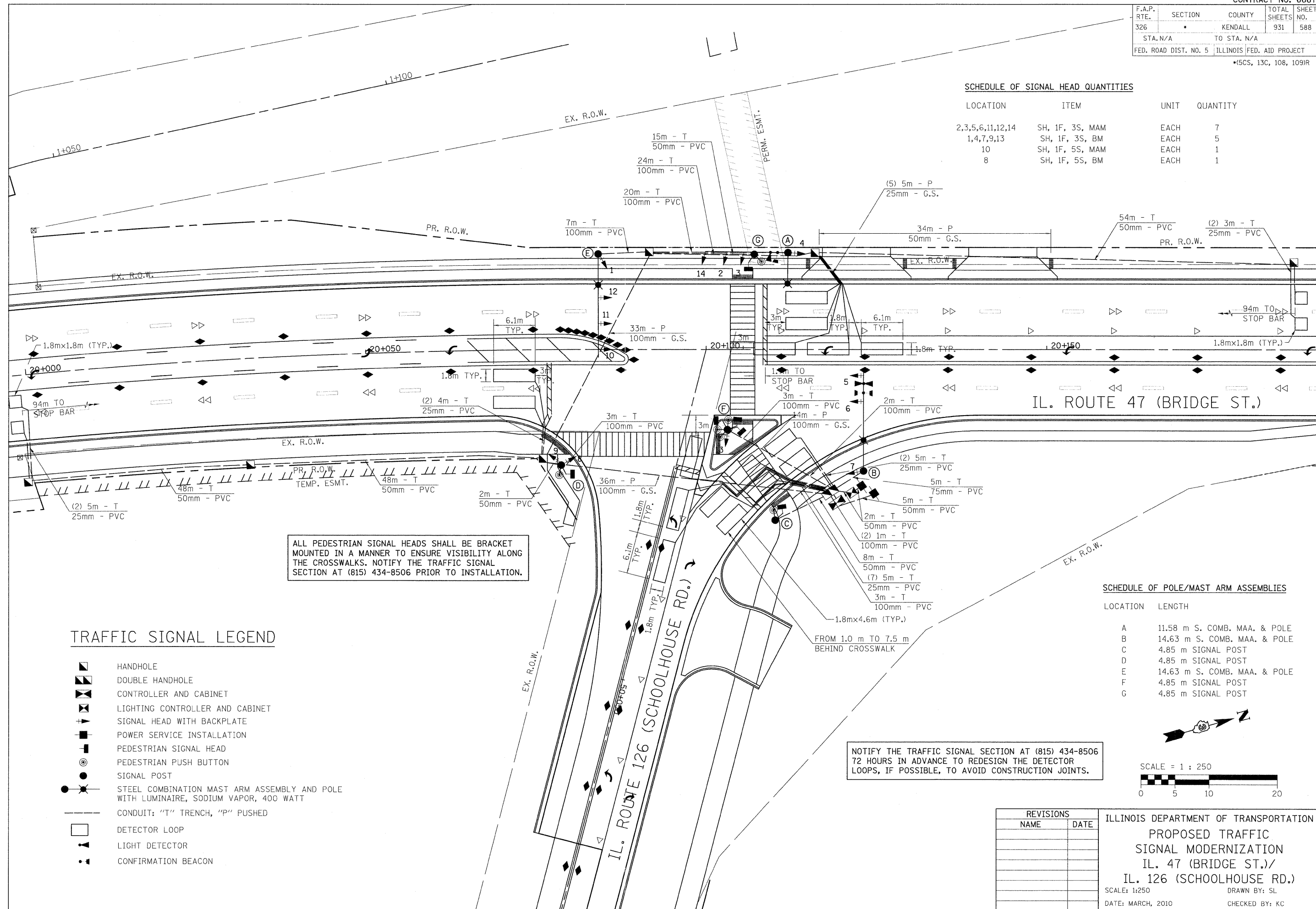


F.A.P. RTE.	SECTION	COUNTY	TOTAL SHEETS	SHEET NO.
326	*	KENDALL	931	588
STA. N/A		TO STA. N/A		
FED. ROAD DIST. NO. 5 ILLINOIS FED. AID PROJECT				
*15CS, 13C, 108, 1091R				

SCHEDULE OF SIGNAL HEAD QUANTITIES

LOCATION	ITEM	UNIT	QUANTITY
2,3,5,6,11,12,14	SH, 1F, 3S, MAM	EACH	7
1,4,7,9,13	SH, 1F, 3S, BM	EACH	5
10	SH, 1F, 5S, MAM	EACH	1
8	SH, 1F, 5S, BM	EACH	1



ALL PEDESTRIAN SIGNAL HEADS SHALL BE BRACKET MOUNTED IN A MANNER TO ENSURE VISIBILITY ALONG THE CROSSWALKS. NOTIFY THE TRAFFIC SIGNAL SECTION AT (815) 434-8506 PRIOR TO INSTALLATION.

NOTIFY THE TRAFFIC SIGNAL SECTION AT (815) 434-8506 72 HOURS IN ADVANCE TO REDESIGN THE DETECTOR LOOPS, IF POSSIBLE, TO AVOID CONSTRUCTION JOINTS.

TRAFFIC SIGNAL LEGEND

- HANDHOLE
- DOUBLE HANDHOLE
- CONTROLLER AND CABINET
- LIGHTING CONTROLLER AND CABINET
- SIGNAL HEAD WITH BACKPLATE
- POWER SERVICE INSTALLATION
- PEDESTRIAN SIGNAL HEAD
- PEDESTRIAN PUSH BUTTON
- SIGNAL POST
- STEEL COMBINATION MAST ARM ASSEMBLY AND POLE WITH LUMINAIRE, SODIUM VAPOR, 400 WATT
- CONDUIT: "T" TRENCH, "P" PUSHED
- DETECTOR LOOP
- LIGHT DETECTOR
- CONFIRMATION BEACON

SCHEDULE OF POLE/MAST ARM ASSEMBLIES

LOCATION	LENGTH
A	11.58 m S. COMB. MAA. & POLE
B	14.63 m S. COMB. MAA. & POLE
C	4.85 m SIGNAL POST
D	4.85 m SIGNAL POST
E	14.63 m S. COMB. MAA. & POLE
F	4.85 m SIGNAL POST
G	4.85 m SIGNAL POST

REVISIONS	
NAME	DATE

ILLINOIS DEPARTMENT OF TRANSPORTATION  
 PROPOSED TRAFFIC  
 SIGNAL MODERNIZATION  
 IL. 47 (BRIDGE ST.)/  
 IL. 126 (SCHOOLHOUSE RD.)  
 SCALE: 1:250  
 DATE: MARCH, 2010  
 DRAWN BY: SL  
 CHECKED BY: KC

PLOT DATE = 8/11/2011  
 FILE NAME = I:\X122\design\5881126\prop.dgn  
 SCALE = 6:3000 (1" = 500')  
 USER NAME = JUSEPESOR