

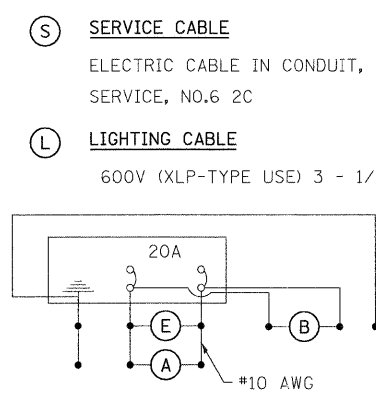
PHASE DESIGNATION DIAGRAM

SCHEDULE OF QUANTITIES

DESCRIPTION	UNIT	QUANTITY
SERVICE INSTALLATION - GROUND MOUNTED	EACH	2
HANDHOLE, PORTLAND CEMENT CONCRETE	EACH	6
DOUBLE HANDHOLE, PORTLAND CEMENT CONCRETE	EACH	1
LUMINAIRE, SODIUM VAPOR, HOR. MOUNT, 400 WATT	EACH	3
FULL-ACTUATED CONTROLLER AND TYPE IV CABINET, SPECIAL	EACH	1
UNINTERRUPTABLE POWER SUPPLY, EXTENDED	EACH	1
TRANSCEIVER - FIBER OPTIC	EACH	1
SIGNAL HEAD, POLYCARBONATE, LED, 1-FACE, 3-SECTION, BRACKET MOUNTED	EACH	5
SIGNAL HEAD, POLYCARBONATE, LED, 1-FACE, 3-SECTION, MAST ARM MOUNTED	EACH	7
SIGNAL HEAD, POLYCARBONATE, LED, 1-FACE, 5-SECTION, BRACKET MOUNTED	EACH	1
SIGNAL HEAD, POLYCARBONATE, LED, 1-FACE, 5-SECTION, MAST ARM MOUNTED	EACH	1
PEDESTRIAN SIGNAL HEAD, POLYCARBONATE, LED, 1-FACE, BRACKET MOUNTED WITH COUNTDOWN TIMER	EACH	6
TRAFFIC SIGNAL BACKPLATE, LOUVERED, FORMED PLASTIC	EACH	14
INDUCTIVE LOOP DETECTOR	EACH	8
LIGHT DETECTOR	EACH	3
LIGHT DETECTOR AMPLIFIER	EACH	1
PEDESTRIAN PUSH-BUTTON	EACH	6
TEMPORARY TRAFFIC SIGNAL INSTALLATION	EACH	1
REMOVE EXISTING TRAFFIC SIGNAL EQUIPMENT	EACH	1
REMOVE EXISTING HANDHOLE	EACH	3
REMOVE EXISTING CONCRETE FOUNDATION	EACH	5
SIGN PANEL - TYPE 1	SQ M	0.45
SIGN PANEL - TYPE 2	SQ M	5.4
CONDUIT IN TRENCH 25mm DIA., PVC	METER	59
CONDUIT IN TRENCH 50mm DIA., PVC	METER	277
CONDUIT IN TRENCH 75mm DIA., PVC	METER	5
CONDUIT IN TRENCH 100mm DIA., PVC	METER	62
CONDUIT PUSHED, 25mm DIA., GALVANIZED STEEL	METER	25
CONDUIT PUSHED, 50mm DIA., GALVANIZED STEEL	METER	34
CONDUIT PUSHED, 100mm DIA., GALVANIZED STEEL	METER	85
ELECTRIC CABLE IN CONDUIT, 600V (XLP-TYPE USE) 1/C NO. 10	METER	634
ELECTRIC CABLE IN CONDUIT, 600V (XLP-TYPE USE) 1/C NO. 6	METER	1120
TRENCH AND BACKFILL FOR ELECTRICAL WORK	METER	403
ELECTRIC CABLE IN CONDUIT, SIGNAL NO. 14 2C	METER	255
ELECTRIC CABLE IN CONDUIT, SIGNAL NO. 14 3C	METER	267
ELECTRIC CABLE IN CONDUIT, SIGNAL NO. 14 5C	METER	916
ELECTRIC CABLE IN CONDUIT, SIGNAL NO. 14 7C	METER	167
ELECTRIC CABLE IN CONDUIT, LEAD-IN, NO. 14, 1-PAIR	METER	1505
ELECTRIC CABLE IN CONDUIT, SERVICE, NO. 6 2C	METER	11
TRAFFIC SIGNAL POST, GALVANIZED STEEL 4.85 METER	EACH	4
STEEL COMBINATION MAST ARM ASSEMBLY AND POLE, 11.58 METER	EACH	1
STEEL COMBINATION MAST ARM ASSEMBLY AND POLE, 14.63 METER	EACH	2
CONCRETE FOUNDATION, TYPE A	METER	4.0
CONCRETE FOUNDATION, TYPE C (SPECIAL)	METER	1.1
CONCRETE FOUNDATION, TYPE E 900mm DIAMETER	METER	12.0
DETECTOR LOOP, TYPE 1	METER	414
ELECTRIC CABLE IN CONDUIT NO. 20, 3/C, TWISTED, SHIELDED	METER	584
REMOVE EXISTING JUNCTION BOX	EACH	3
LIGHTING CONTROLLER, SPECIAL	EACH	1

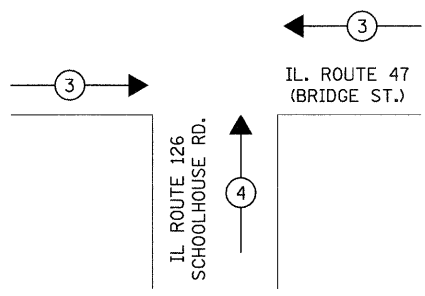
PROPOSED CABLE DIAGRAM LEGEND

- CONTROLLER AND CABINET
- LIGHTING CONTROLLER AND CABINET
- SERVICE INSTALLATION
- TRAFFIC SIGNAL HEAD WITH BACKPLATE
- DENOTES NUMBER OF CONDUCTORS
- LUMINAIRE, SODIUM VAPOR, 400 WATT
- PEDESTRIAN SIGNAL HEAD WITH COUNTDOWN DISPLAY
- PEDESTRIAN PUSH BUTTON
- DETECTOR LOOP
- DETECTOR LOOP SYSTEM
- GROUND ROD AT HANDHOLE OR DOUBLE HANDHOLE
- GROUND ROD AT POST (P) OR MAST ARM POLE (MA)
- GROUND ROD AT ELECTRIC SERVICE INSTALLATION
- GROUND ROD AT CONTROLLER
- LIGHT DETECTOR
- CONFIRMATION BEACON



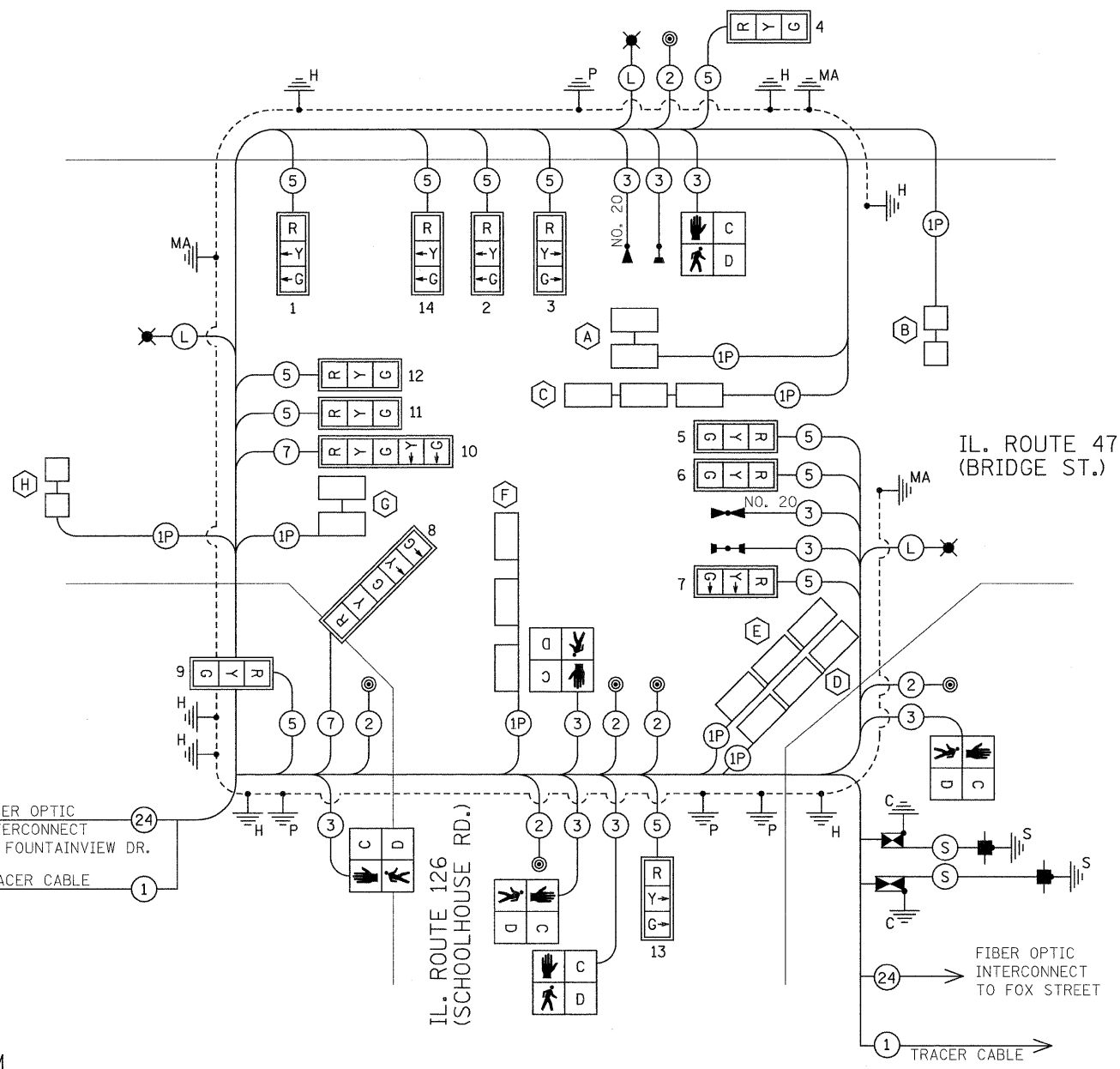
LIGHTING CIRCUIT DIAGRAM

AGENCY RESPONSIBLE FOR ENERGY CHARGES:
 CITY OF YORKVILLE
 CONTRACTOR PAYS ALL ENERGY CHARGES
 UNTIL PROJECT IS ACCEPTED



EMERGENCY VEHICLE PREEMPTION SEQUENCE

PROPOSED EMERGENCY VEHICLE PREEMPTORS		
EMERGENCY VEHICLE PREEMPTOR	3	4
MOVEMENT	←	↑



CABLE DIAGRAM

CONTROLLER SPECIFIED: ECONOLITE ASC-3/2100 TS-2 TYPE 2
 PEDESTRIAN PUSH-BUTTONS: 4 EVR ROUND MODEL
 LUMINAIRES: 400 WATT HPS STERNBERG 1914A/CHS LUMINAIRES

NOTIFY THE TRAFFIC SIGNAL SECTION AT (815) 434-8506
 72 HOURS IN ADVANCE TO REDESIGN THE DETECTOR
 LOOPS, IF POSSIBLE, TO AVOID CONSTRUCTION JOINTS.

REVISIONS	
NAME	DATE

ILLINOIS DEPARTMENT OF TRANSPORTATION
 PHASE DIAGRAM, CABLE DIAGRAM
 SCHEDULE OF QUANTITIES
 IL. 47 (BRIDGE ST.)/
 IL. 126 (SCHOOLHOUSE RD.)
 SCALE: NONE DRAWN BY: SL
 DATE: MARCH, 2010 CHECKED BY: KC

PLOT DATE = 6/11/2011
 FILE NAME = h:\5122\design\569\1126_cable.dgn
 PLOT SCALE = 6:3000 in / in.
 USER NAME = JOSEPHESCPL