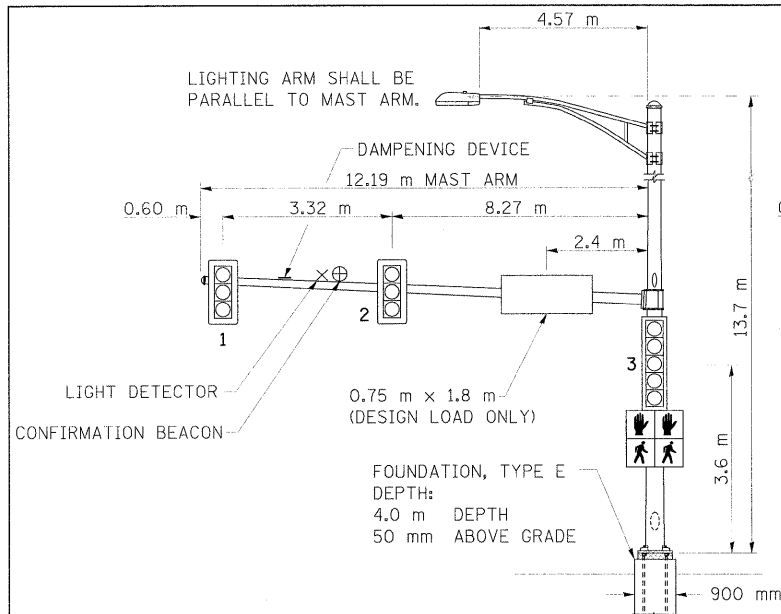
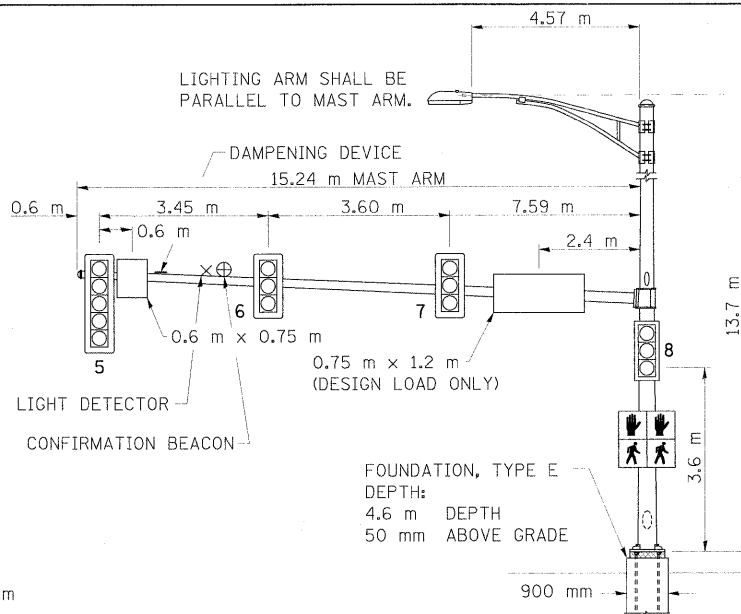


F.A.P. RTE.	SECTION	COUNTY	TOTAL SHEETS	SHEET NO.
326	*	KENDALL	931	595
STA. N/A		TO STA. N/A		
FED. ROAD DIST. NO. 5 ILLINOIS FED. AID PROJECT				

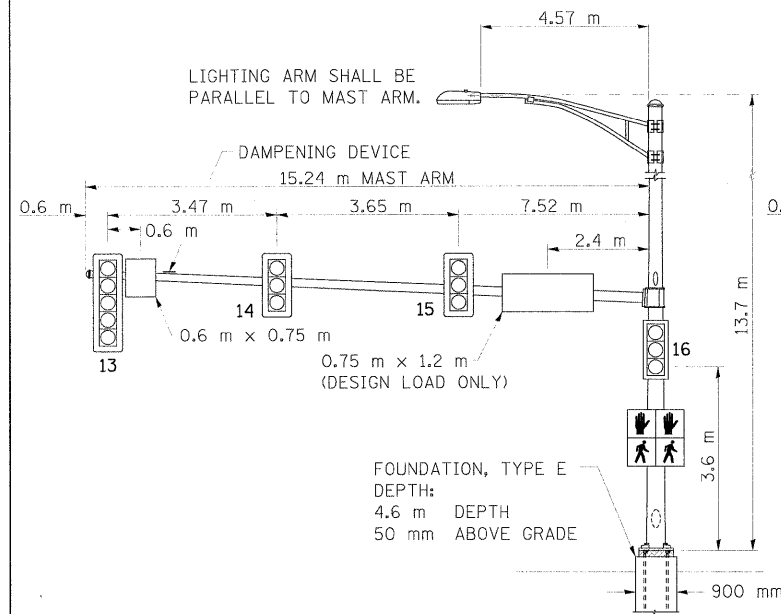
\*15CS, 13C, 10B, 1091R



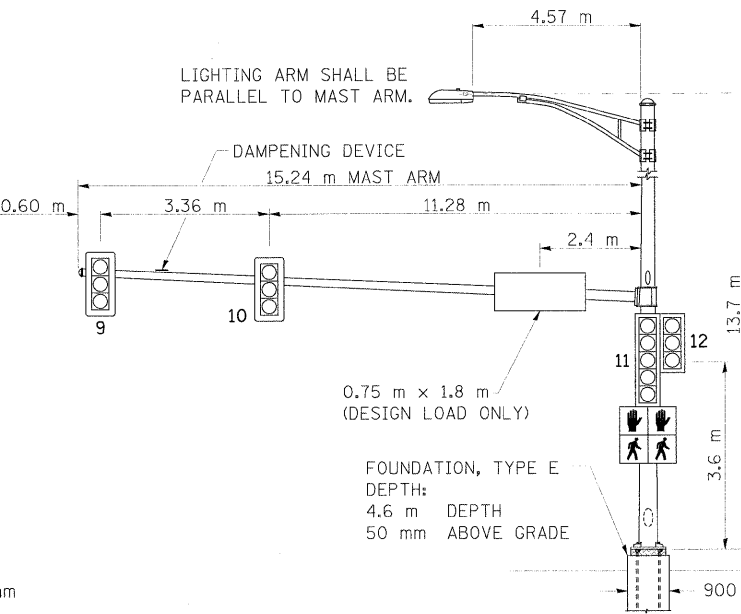
MAST ARM NORTHWEST QUADRANT (A)



MAST ARM NORTHEAST QUADRANT (C)



MAST ARM SOUTHWEST QUADRANT (E)



MAST ARM SOUTHEAST QUADRANT (D)

ELECTRICAL LOAD CHART

IL ROUTE 47

INDICATION	NUMBER	WATTAGE EACH	BURN TIME (%)
RED	10	12	60
YELLOW	10	32	5
GREEN	10	12	35
YELLOW ARROW	4	12	5
GREEN ARROW	4	11	10
UP	4	7	5
DOWN	4	7	95

FOX STREET

RED	6	12	70
YELLOW	6	32	5
GREEN	6	12	25
UP	4	7	5
DOWN	4	7	95

TRAFFIC SIGNAL CABINET

ITEM	NUMBER	WATTAGE EACH	BURN TIME (%)
CONTROLLER	1	6	100
INDUCTIVE LOOP DETECTOR UNINTERRUPTABLE	12	1.5	100
POWER SUPPLY	1	50	100
LIGHT DETECTOR AMPLIFIER	1	1.5	100

HIGHWAY LIGHTING

ITEM	NUMBER	WATTAGE EACH	BURN TIME (%)
CONTROLLER	1	6	100
LUMINAIRE	4	400	45

DETECTOR LOOP INDUCTANCE CHART

DETECTOR LOOP SYSTEM	TURNS PER LOOP	INDUCTANCE READING (MICROHENRIES)	FREQUENCY (HERTZ)	J PIN STATUS
A	4	540	26,243	OFF
B	5	430	29,433	ON
C	4	800	21,564	ON
D	4	592	25,084	ON
E	5	432	29,364	ON
F	4	790	21,700	ON
G	4	548	26,054	OFF
H	5	436	29,229	ON
I	4	808	21,457	ON
J	4	592	25,084	ON
K	5	432	29,364	ON
L	4	820	21,299	ON

NOTIFY THE TRAFFIC SIGNAL SECTION AT (815) 434-8506 72 HOURS IN ADVANCE TO REDESIGN THE DETECTOR LOOPS, IF POSSIBLE, TO AVOID CONSTRUCTION JOINTS.

- NOTES:
- WORD "GRADE" IS TO BE INTERPRETED AS TOP OF CURB. TOP OF FOUNDATION SHALL NOT BE EXPOSED MORE THAN 100 mm ABOVE THE SURROUNDING GROUND.
  - ALL SIGNAL HEADS SHALL HAVE BACKPLATES.
  - FOUNDATION SHOULD BE 50mm ABOVE GRADE OR 0.35m ABOVE CENTERLINE OF ROADWAY, WHICHEVER IS HIGHER.

PEDESTRIAN CROSSING SIGN DETAIL

COUNT-DOWN PEDESTRIAN SIGN R10-3e TO BE USED.

8 REQUIRED.

DIMENSIONS: 230mm x 380mm (TYP.)  
 LEGEND AND BORDER: NON-REFLECTORIZED BLACK  
 BACKGROUND: RETROREFLECTIVE WHITE  
 NUMBERS AND SYMBOLS: RETROREFLECTIVE ORANGE

ONE SIGN SHALL BE PROVIDED FOR EACH PUSH-BUTTON. ORIENTATION OF DIRECTIONAL ARROWS TO BE DETERMINED BY PUSH-BUTTON LOCATION.

ALL MOUNTING HARDWARE SHALL BE STAINLESS STEEL CONSTRUCTION. ALL MOUNTING BOLTS SHALL BE HEX HEAD.

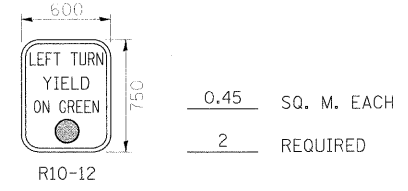
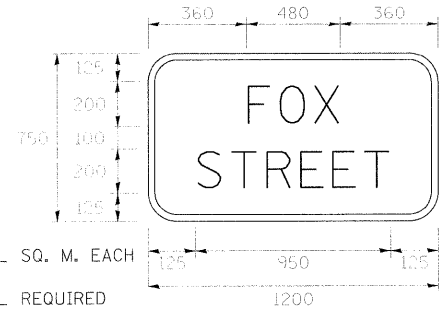
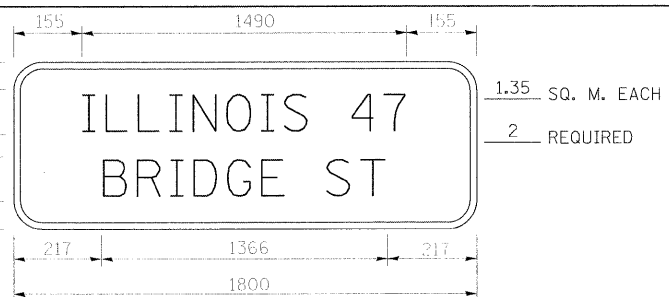
MATERIALS AND INSTALLATION OF THIS SIGN SHALL BE INCLUDED IN THE COST OF PEDESTRIAN PUSH-BUTTON.

STREET SIGN DETAIL

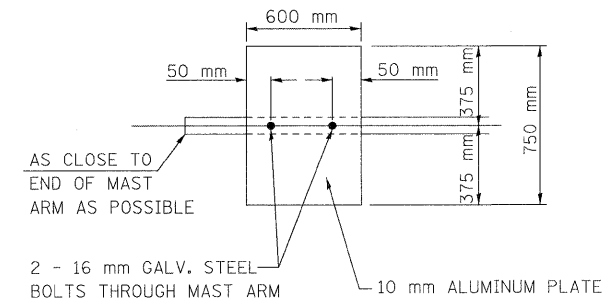
THESE STREET NAME SIGNS SHALL BE PLACED ON THE MAST ARMS PARALLEL TO THE RESPECTIVE ROUTE AS DIRECTED BY THE ENGINEER.

STREET NAME SIGNS:

- TYPE ZZ SHEETING REQUIRED
- WHITE/GREEN BACKGROUND
- STYLE (d)-15 mm BORDER
- 200 mm SERIES D LETTERS
- ALL DIMENSIONS ARE IN MILLIMETERS UNLESS OTHERWISE SHOWN



NOTE: DAMPENING DEVICE SHALL CONSIST OF A 600mm X 750mm TYPE 1, UNPAINTED ALUMINUM SIGN STOCK MOUNTED HORIZONTALLY ON TOP OF MAST ARM WITH THE 750mm LENGTH PERPENDICULAR TO THE ARM. COST OF THE DAMPENING DEVICE IS INCLUDED IN THE MAST ARM PAY ITEM.



DAMPENING PLATE DETAIL (TOP VIEW) INCIDENTAL TO MAST ARM QUANTITY

REVISIONS		NAME	DATE
NO.	DESCRIPTION		

ILLINOIS DEPARTMENT OF TRANSPORTATION  
 MAST ARM LOADING DIAGRAM  
 ELECTRICAL LOAD CHART  
 SIGN DETAILS  
 IL. 47 (BRIDGE ST.)//  
 FOX STREET

SCALE: NONE  
 DATE: MARCH, 2010  
 DRAWN BY: SL  
 CHECKED BY: KC

PLOT DATE = 6/11/2011  
 FILE NAME = h:\3122\design\595fox-mast.dgn  
 PLOT SCALE = 6.3500 m / IN.  
 USER NAME = JBERDESCR.