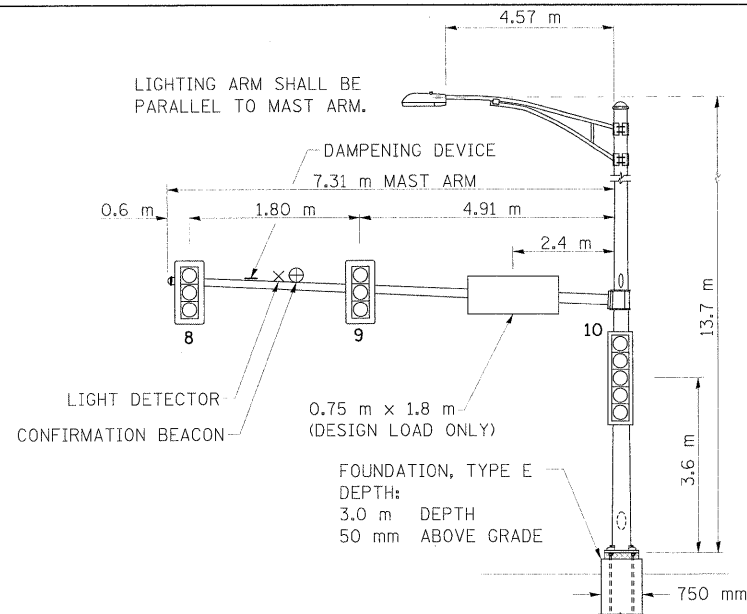
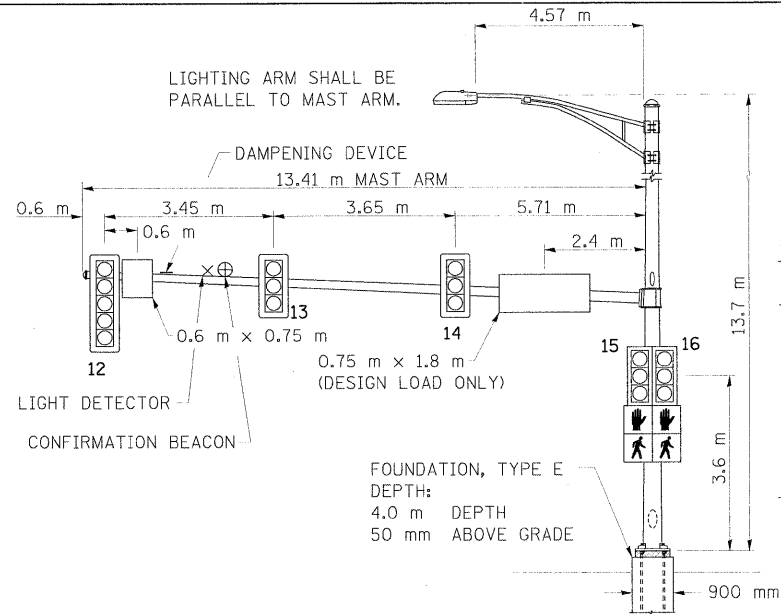


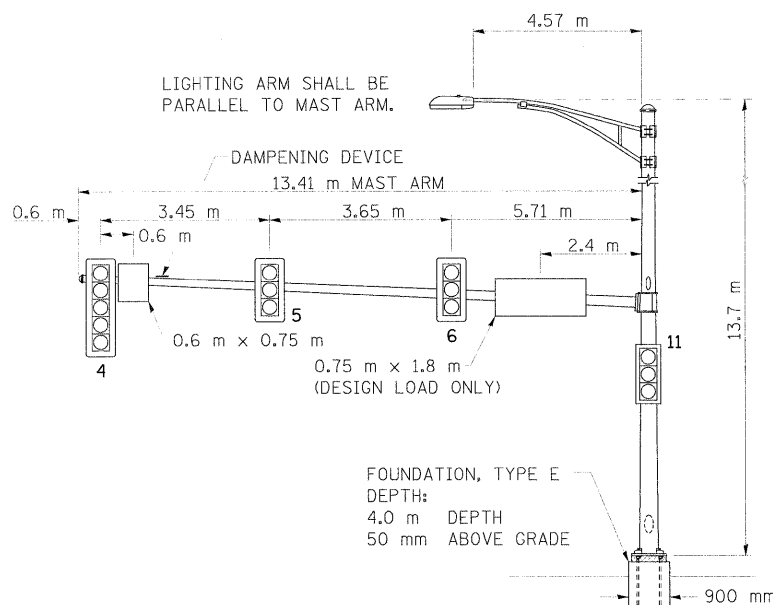
F.A.P. RTE.	SECTION	COUNTY	TOTAL SHEETS	SHEET NO.
326	*	KENDALL	931	600
STA. N/A		TO STA. N/A		
FED. ROAD DIST. NO. 5		ILLINOIS FED. AID PROJECT		



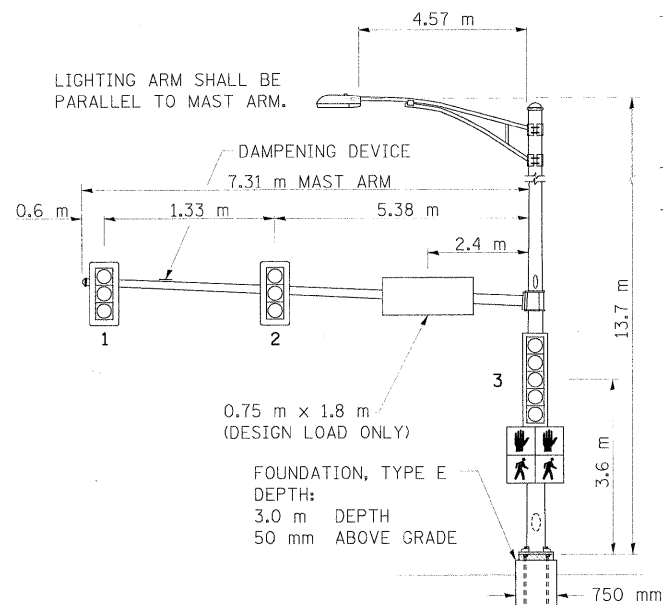
MAST ARM NORTHWEST QUADRANT (D)



MAST ARM NORTHEAST QUADRANT (E)



MAST ARM SOUTHWEST QUADRANT (B)



MAST ARM SOUTHEAST QUADRANT (A)

ELECTRICAL LOAD CHART

IL ROUTE 47

INDICATION	NUMBER	WATTAGE EACH	BURN TIME (%)
RED	10	12	60
YELLOW	10	32	5
GREEN	10	12	35
YELLOW ARROW	4	12	5
GREEN ARROW	4	11	10
↑	4	7	5
↓	4	7	95

VAN EMMON STREET

RED	6	12	70
YELLOW	6	32	5
GREEN	6	12	25
↑	4	7	5
↓	4	7	95

TRAFFIC SIGNAL CABINET

ITEM	NUMBER	WATTAGE EACH	BURN TIME (%)
MASTER CONTROLLER	1	6	100
INDUCTIVE LOOP DETECTOR	9	1.5	100
UNINTERRUPTIBLE POWER SUPPLY	1	50	100
LIGHT DETECTOR AMPLIFIER	1	1.5	100

HIGHWAY LIGHTING

ITEM	NUMBER	WATTAGE EACH	BURN TIME (%)
CONTROLLER	1	6	100
LUMINAIRE	4	250	45

NOTES:

- WORD "GRADE" IS TO BE INTERPRETED AS TOP OF CURB. TOP OF FOUNDATION SHALL NOT BE EXPOSED MORE THAN 100 mm ABOVE THE SURROUNDING GROUND.
- ALL SIGNAL HEADS SHALL HAVE BACKPLATES.
- FOUNDATION SHOULD BE 50mm ABOVE GROUND OR 0.35m ABOVE CENTERLINE OF ROADWAY, WHICHEVER IS HIGHER.

DETECTOR LOOP INDUCTANCE CHART

DETECTOR LOOP SYSTEM	TURNS PER LOOP	INDUCTANCE READING (MICROHENRIES)	FREQUENCY (HERTZ)	J PIN STATUS
A	4	533	26,419	OFF
B	5	423	29,675	ON
C	4	793	21,659	ON
D	4	452	28,688	ON
E	4	542	26,198	OFF
F	5	433	29,330	ON
G	4	802	21,537	ON
H	4	492	27,516	ON
I	5	362	32,078	ON

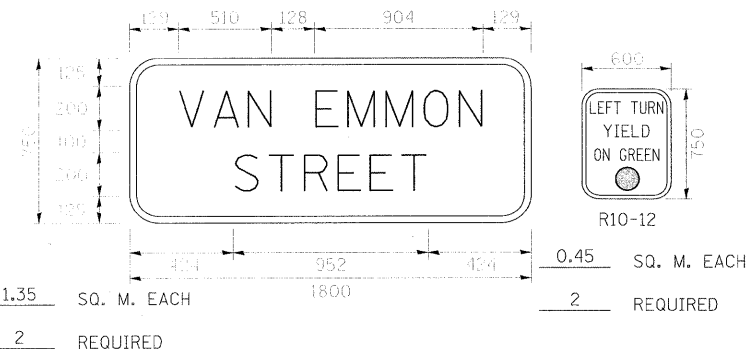
NOTIFY THE TRAFFIC SIGNAL SECTION AT (815) 434-8506 72 HOURS IN ADVANCE TO REDESIGN THE DETECTOR LOOPS, IF POSSIBLE, TO AVOID CONSTRUCTION JOINTS.

STREET SIGN DETAIL

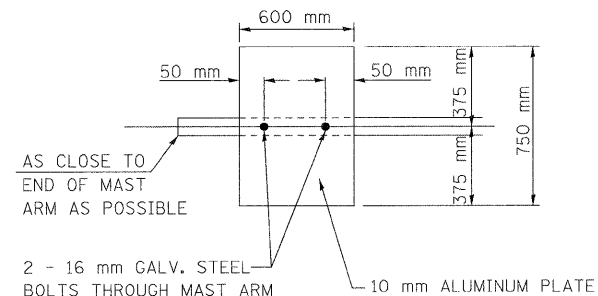
THESE STREET NAME SIGNS SHALL BE PLACED ON THE MAST ARMS PARALLEL TO THE RESPECTIVE ROUTE AS DIRECTED BY THE ENGINEER.

STREET NAME SIGNS:

- TYPE ZZ SHEETING REQUIRED
- WHITE/GREEN BACKGROUND
- STYLE (d)-15 mm BORDER
- 200 mm SERIES D LETTERS
- ALL DIMENSIONS ARE IN MILLIMETERS UNLESS OTHERWISE SHOWN

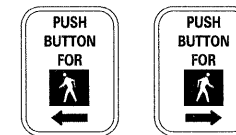


NOTE: DAMPENING DEVICE SHALL CONSIST OF A 600mm X 750mm TYPE 1, UNPAINTED ALUMINUM SIGN STOCK MOUNTED HORIZONTALLY ON TOP OF MAST ARM WITH THE 750mm LENGTH PERPENDICULAR TO THE ARM. COST OF THE DAMPENING DEVICE IS INCLUDED IN THE MAST ARM PAY ITEM.



DAMPENING PLATE DETAIL (TOP VIEW) INCIDENTAL TO MAST ARM QUANTITY

PEDESTRIAN CROSSING SIGN DETAIL



8 REQUIRED

DIMENSIONS: 230mm x 305mm (TYP.)
LEGEND AND BORDER: NON-REFLECTORIZED BLACK
BACKGROUND: NON-REFLECTORIZED WHITE

ONE SIGN SHALL BE PROVIDED FOR EACH PUSH-BUTTON. ORIENTATION OF DIRECTIONAL ARROWS TO BE DETERMINED BY PUSH-BUTTON LOCATION.

ALL MOUNTING HARDWARE SHALL BE STAINLESS STEEL CONSTRUCTION. ALL MOUNTING BOLTS SHALL BE HEX HEAD.

MATERIALS AND INSTALLATION OF THIS SIGN SHALL BE INCLUDED IN THE COST OF PEDESTRIAN PUSH-BUTTON.

REVISIONS		ILLINOIS DEPARTMENT OF TRANSPORTATION MAST ARM LOADING DIAGRAM ELECTRICAL LOAD CHART SIGN DETAILS IL. 47 (BRIDGE ST.)/ VAN EMMON STREET
NAME	DATE	

SCALE: NONE
DATE: MARCH, 2010
DRAWN BY: SL
CHECKED BY: KC