

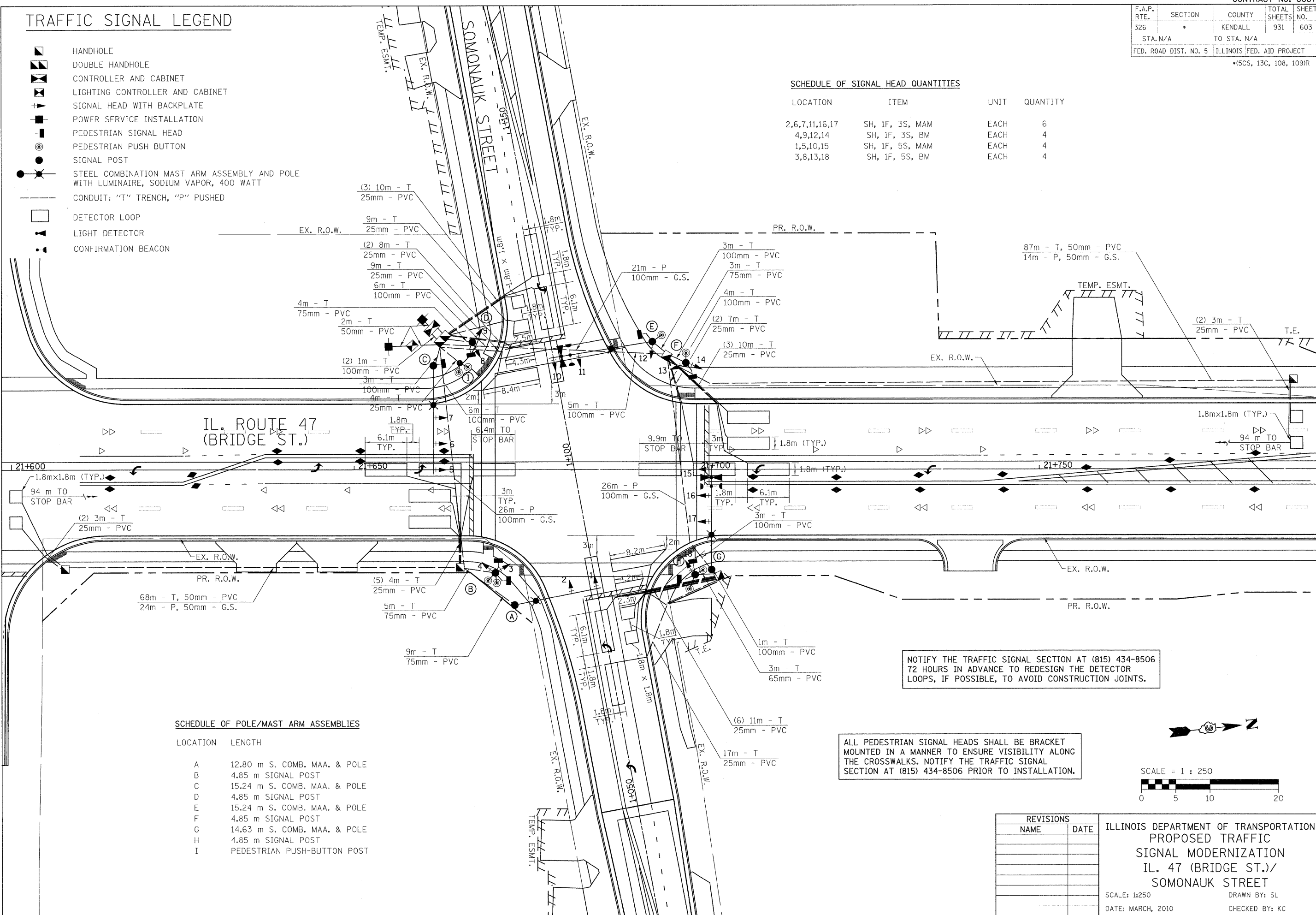
F.A.P. RTE.	SECTION	COUNTY	TOTAL SHEETS	SHEET NO.
326	*	KENDALL	931	603
STA. N/A		TO STA. N/A		
FED. ROAD DIST. NO. 5		ILLINOIS FED. AID PROJECT		
*15CS, 13C, 108, 1091R				

TRAFFIC SIGNAL LEGEND

- HANDHOLE
- DOUBLE HANDHOLE
- CONTROLLER AND CABINET
- LIGHTING CONTROLLER AND CABINET
- SIGNAL HEAD WITH BACKPLATE
- POWER SERVICE INSTALLATION
- PEDESTRIAN SIGNAL HEAD
- PEDESTRIAN PUSH BUTTON
- SIGNAL POST
- STEEL COMBINATION MAST ARM ASSEMBLY AND POLE WITH LUMINAIRE, SODIUM VAPOR, 400 WATT
- CONDUIT: "T" TRENCH, "P" PUSHED
- DETECTOR LOOP
- LIGHT DETECTOR
- CONFIRMATION BEACON

SCHEDULE OF SIGNAL HEAD QUANTITIES

LOCATION	ITEM	UNIT	QUANTITY
2,6,7,11,16,17	SH, 1F, 3S, MAM	EACH	6
4,9,12,14	SH, 1F, 3S, BM	EACH	4
1,5,10,15	SH, 1F, 5S, MAM	EACH	4
3,8,13,18	SH, 1F, 5S, BM	EACH	4

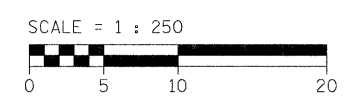


SCHEDULE OF POLE/MAST ARM ASSEMBLIES

LOCATION	LENGTH
A	12.80 m S. COMB. MAA. & POLE
B	4.85 m SIGNAL POST
C	15.24 m S. COMB. MAA. & POLE
D	4.85 m SIGNAL POST
E	15.24 m S. COMB. MAA. & POLE
F	4.85 m SIGNAL POST
G	14.63 m S. COMB. MAA. & POLE
H	4.85 m SIGNAL POST
I	PEDESTRIAN PUSH-BUTTON POST

NOTIFY THE TRAFFIC SIGNAL SECTION AT (815) 434-8506 72 HOURS IN ADVANCE TO REDESIGN THE DETECTOR LOOPS, IF POSSIBLE, TO AVOID CONSTRUCTION JOINTS.

ALL PEDESTRIAN SIGNAL HEADS SHALL BE BRACKET MOUNTED IN A MANNER TO ENSURE VISIBILITY ALONG THE CROSSWALKS. NOTIFY THE TRAFFIC SIGNAL SECTION AT (815) 434-8506 PRIOR TO INSTALLATION.



REVISIONS	
NAME	DATE

ILLINOIS DEPARTMENT OF TRANSPORTATION
 PROPOSED TRAFFIC
 SIGNAL MODERNIZATION
 IL. 47 (BRIDGE ST.)/
 SOMONAUK STREET
 SCALE: 1:250
 DATE: MARCH, 2010
 DRAWN BY: SL
 CHECKED BY: KC

PLOT DATE = 8/11/2011
 FILE NAME = H:\122\design\603somonauk-prop.dgn
 PLOT SCALE = 6:3600 m / IN.
 USER NAME = _USEDESOR.