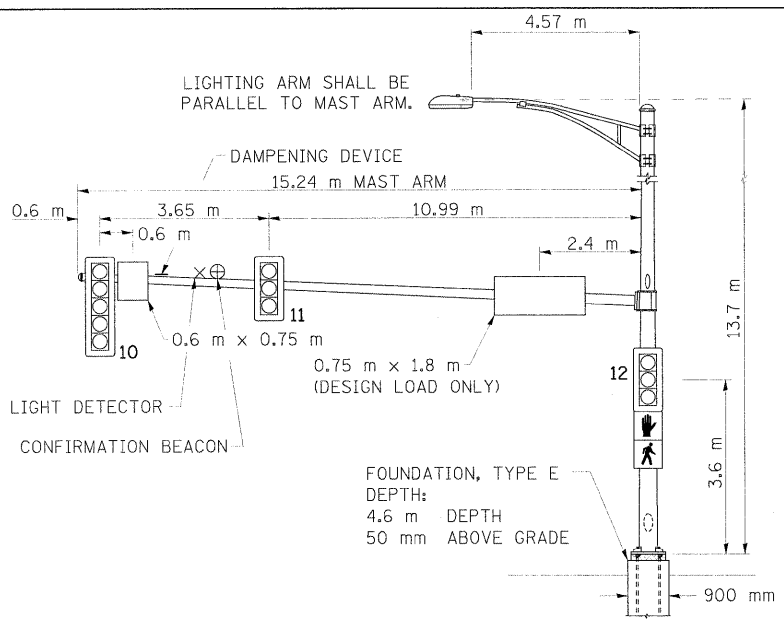
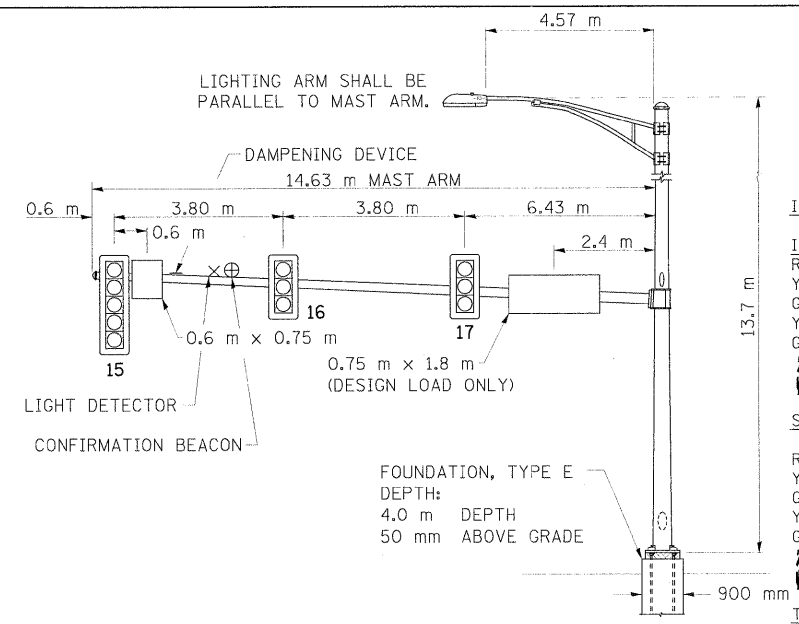


F.A.P. RTE.	SECTION	COUNTY	TOTAL SHEETS	SHEET NO.
326	*	KENDALL	931	605
STA. N/A		TO STA. N/A		
FED. ROAD DIST. NO. 5		ILLINOIS FED. AID PROJECT		

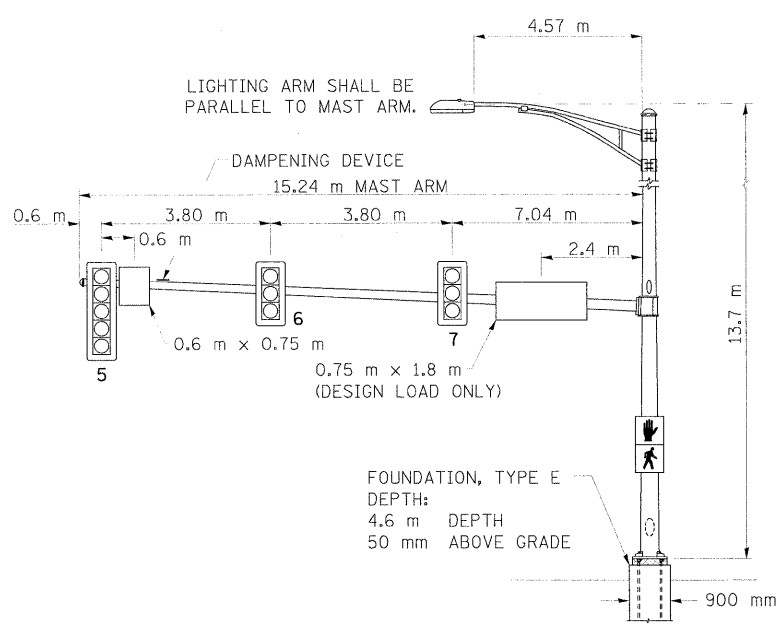
*15CS, 13C, 108, 109IR



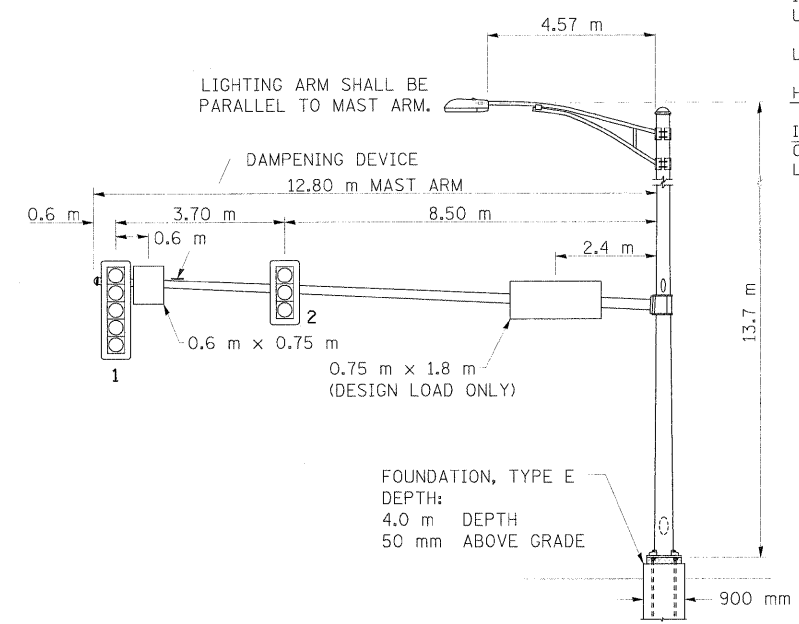
MAST ARM NORTHWEST QUADRANT (E)



MAST ARM NORTHEAST QUADRANT (G)



MAST ARM SOUTHWEST QUADRANT (C)



MAST ARM SOUTHEAST QUADRANT (A)

ELECTRICAL LOAD CHART

IL ROUTE 47

INDICATION	NUMBER	WATTAGE EACH	BURN TIME (%)
RED	10	12	60
YELLOW	10	32	5
GREEN	10	12	35
YELLOW ARROW	4	12	5
GREEN ARROW	4	11	10
GREEN ARROW	4	7	5
GREEN ARROW	4	7	95

SOMONAUK STREET

RED	8	12	70
YELLOW	8	32	5
GREEN	8	12	25
YELLOW ARROW	4	12	5
GREEN ARROW	4	11	10
GREEN ARROW	4	7	5
GREEN ARROW	4	7	95

TRAFFIC SIGNAL CABINET

ITEM	NUMBER	WATTAGE EACH	BURN TIME (%)
CONTROLLER	1	6	100
INDUCTIVE LOOP DETECTOR UNINTERRUPTABLE POWER SUPPLY	12	1.5	100
LIGHT DETECTOR AMPLIFIER	1	1.5	100

HIGHWAY LIGHTING

ITEM	NUMBER	WATTAGE EACH	BURN TIME (%)
CONTROLLER	1	6	100
LUMINAIRE	4	400	45

DETECTOR LOOP INDUCTANCE CHART

DETECTOR LOOP SYSTEM	TURN PER LOOP	INDUCTANCE READING (MICROHENRIES)	FREQUENCY (HERTZ)	J PIN STATUS
A	4	551	25,983	OFF
B	6	603	24,855	ON
C	4	809	21,443	ON
D	4	553	25,964	ON
E	5	428	29,516	ON
F	4	836	21,097	ON
G	4	547	26,078	OFF
H	6	596	25,000	ON
I	4	807	21,470	ON
J	4	516	26,856	ON
K	5	387	31,017	ON
L	4	788	21,727	ON

GRANULAR SOILS ARE EXPECTED TO BE ENCOUNTERED AT THIS INTERSECTION.

NOTIFY THE TRAFFIC SIGNAL SECTION AT (815) 434-8506 72 HOURS IN ADVANCE TO REDESIGN THE DETECTOR LOOPS, IF POSSIBLE, TO AVOID CONSTRUCTION JOINTS.

- NOTES:
- WORD "GRADE" IS TO BE INTERPRETED AS TOP OF CURB, TOP OF FOUNDATION SHALL NOT BE EXPOSED MORE THAN 100 mm ABOVE THE SURROUNDING GROUND.
 - ALL SIGNAL HEADS SHALL HAVE BACKPLATES.
 - FOUNDATION SHOULD BE 50mm ABOVE GROUND OR 0.35m ABOVE CENTERLINE OF ROADWAY, WHICHEVER IS HIGHER.

PEDESTRIAN CROSSING SIGN DETAIL

COUNT-DOWN PEDESTRIAN SIGN R10-3e TO BE USED.

8 REQUIRED.

DIMENSIONS: 230mm x 380mm (TYP.)
 LEGEND AND BORDER: NON-REFLECTORIZED BLACK
 BACKGROUND: RETROREFLECTIVE WHITE
 NUMBERS AND SYMBOLS: RETROREFLECTIVE ORANGE

ONE SIGN SHALL BE PROVIDED FOR EACH PUSH-BUTTON. ORIENTATION OF DIRECTIONAL ARROWS TO BE DETERMINED BY PUSH-BUTTON LOCATION.

ALL MOUNTING HARDWARE SHALL BE STAINLESS STEEL CONSTRUCTION. ALL MOUNTING BOLTS SHALL BE HEX HEAD.

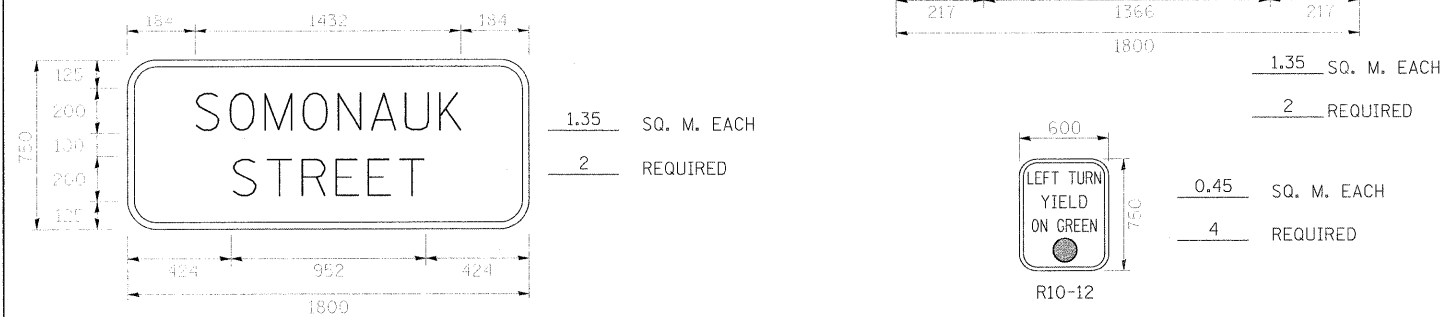
MATERIALS AND INSTALLATION OF THIS SIGN SHALL BE INCLUDED IN THE COST OF PEDESTRIAN PUSH-BUTTON.

STREET SIGN DETAIL

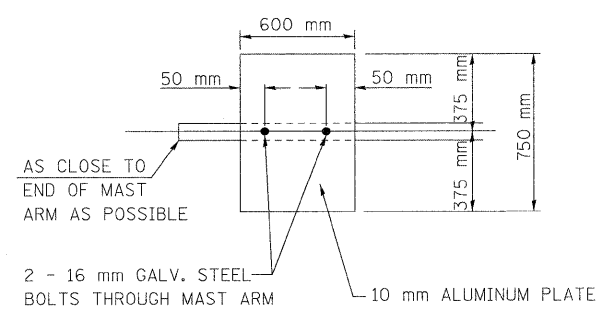
THESE STREET NAME SIGNS SHALL BE PLACED ON THE MAST ARMS PARALLEL TO THE RESPECTIVE ROUTE AS DIRECTED BY THE ENGINEER.

STREET NAME SIGNS:

- TYPE ZZ SHEETING REQUIRED
- WHITE/GREEN BACKGROUND
- STYLE (d)-15 mm BORDER
- 200 mm SERIES D LETTERS
- ALL DIMENSIONS ARE IN MILLIMETERS UNLESS OTHERWISE SHOWN



NOTE: DAMPENING DEVICE SHALL CONSIST OF A 600mm X 750mm TYPE 1, UNPAINTED ALUMINUM SIGN STOCK MOUNTED HORIZONTALLY ON TOP OF MAST ARM WITH THE 750mm LENGTH PERPENDICULAR TO THE ARM. COST OF THE DAMPENING DEVICE IS INCLUDED IN THE MAST ARM PAY ITEM.



DAMPENING PLATE DETAIL (TOP VIEW) INCIDENTAL TO MAST ARM QUANTITY

REVISIONS		ILLINOIS DEPARTMENT OF TRANSPORTATION MAST ARM LOADING DIAGRAM ELECTRICAL LOAD CHART SIGN DETAILS IL. 47 (BRIDGE ST.)/ SOMONAUK STREET
NAME	DATE	

SCALE: NONE DRAWN BY: SL
 DATE: MARCH, 2010 CHECKED BY: KC

PLOT DATE = 8/11/2011
 FILE NAME = h:\s22\design\605somonauk_mast.dgn
 PLOT SCALE = 6:3600 m / 1 in.
 USER NAME = jusefdesca