

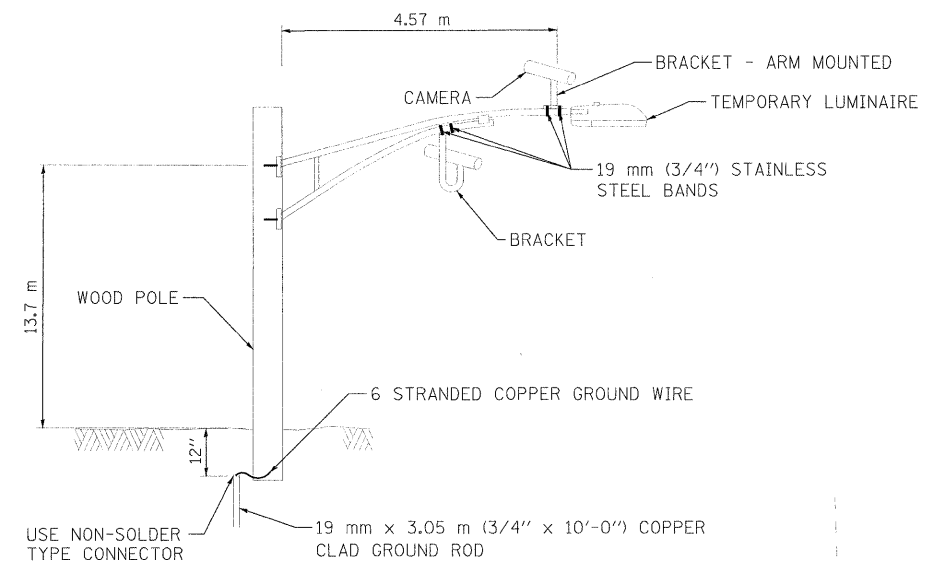
F.A.P. RTE.	SECTION	COUNTY	TOTAL SHEETS	SHEET NO.
326		KENDALL	931	606
STA. N/A		TO STA. N/A		
FED. ROAD DIST. NO. 5		ILLINOIS FED. AID PROJECT		
*5CS, 13C, 10B, 109IR				

EXISTING SIGNAL LEGEND

- HANDHOLE
- DOUBLE HANDHOLE
- MAST ARM ASSEMBLY AND POLE
- CONTROLLER
- JUNCTION BOX
- SIGNAL POST

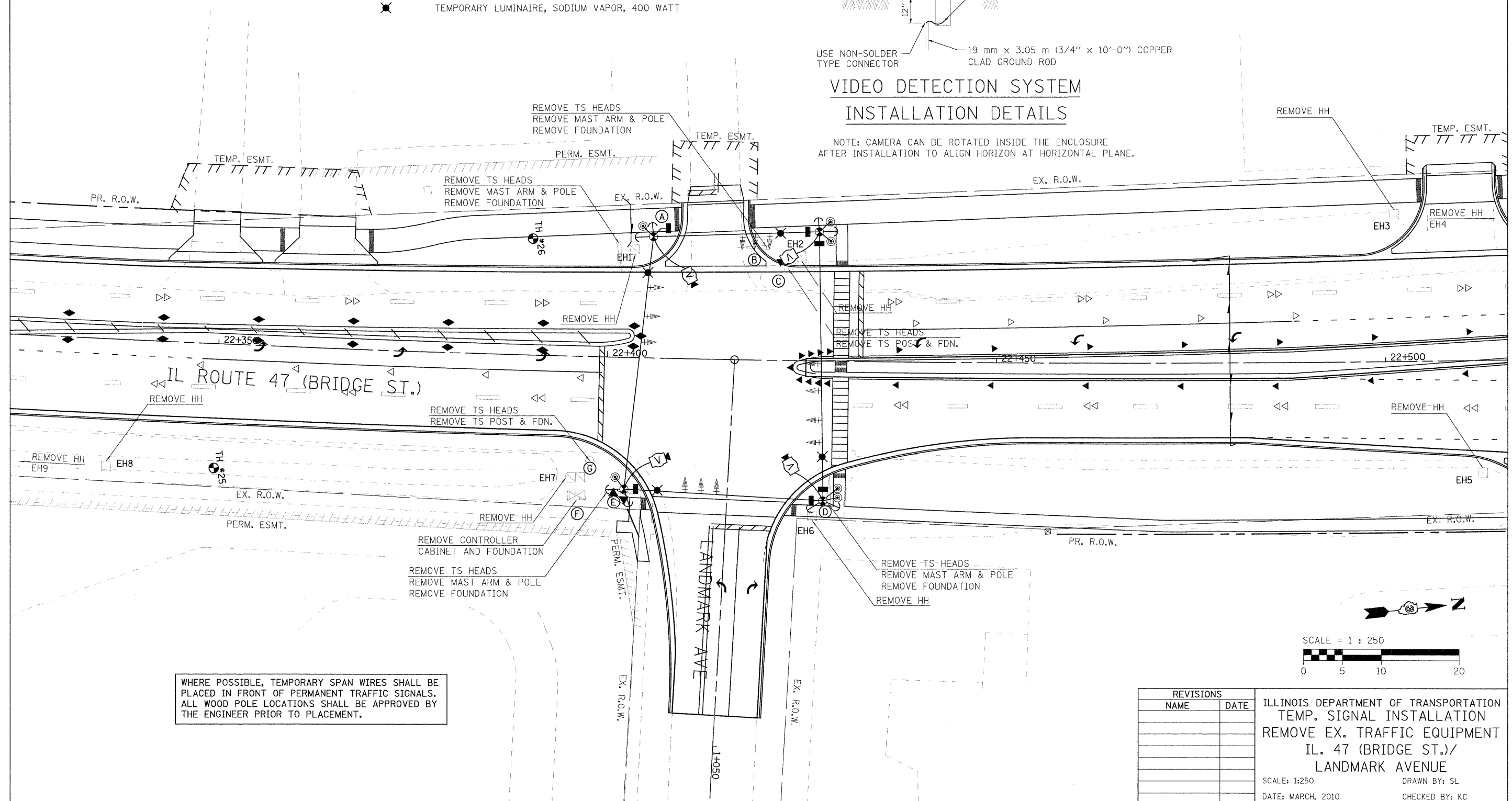
TEMPORARY TRAFFIC SIGNAL LEGEND

- TEMPORARY CONTROLLER AND CABINET
- TEMPORARY TRAFFIC SIGNAL HEAD WITH BACKPLATE
- TEMPORARY PEDESTRIAN PUSH-BUTTON
- TEMPORARY PED. SIGNAL HEAD, BRACKET MOUNTED
- VIDEO DETECTION SYSTEM
- TEMPORARY WOOD POLE (CLASS 5) 14 m MINIMUM
- TEMPORARY SPAN WIRE, TETHER WIRE AND CABLE
- GUY WIRES
- TEMPORARY LUMINAIRE, SODIUM VAPOR, 400 WATT

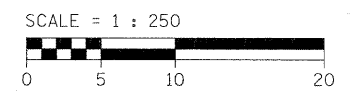


**VIDEO DETECTION SYSTEM
INSTALLATION DETAILS**

NOTE: CAMERA CAN BE ROTATED INSIDE THE ENCLOSURE AFTER INSTALLATION TO ALIGN HORIZON AT HORIZONTAL PLANE.



WHERE POSSIBLE, TEMPORARY SPAN WIRES SHALL BE PLACED IN FRONT OF PERMANENT TRAFFIC SIGNALS. ALL WOOD POLE LOCATIONS SHALL BE APPROVED BY THE ENGINEER PRIOR TO PLACEMENT.



REVISIONS	
NAME	DATE

ILLINOIS DEPARTMENT OF TRANSPORTATION
 TEMP. SIGNAL INSTALLATION
 REMOVE EX. TRAFFIC EQUIPMENT
 IL. 47 (BRIDGE ST.)//
 LANDMARK AVENUE
 SCALE: 1:250
 DATE: MARCH, 2010
 DRAWN BY: SL
 CHECKED BY: KC

PLOT DATE = 8/11/2011
 FILE NAME = H:\V122\design\606-6071\landmark_rem.dgn
 PLOT SCALE = 6:3000 in / in
 USER NAME = JOSEPHESOR.