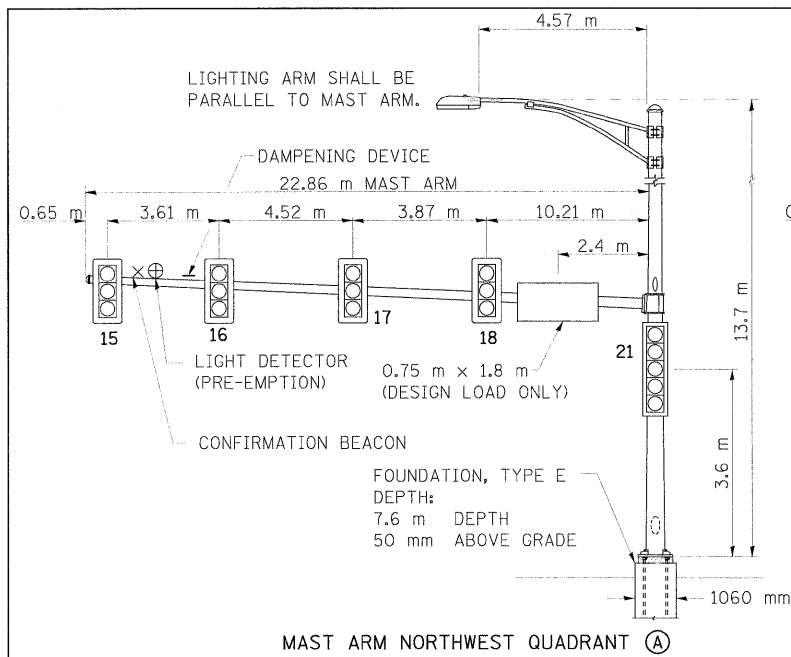
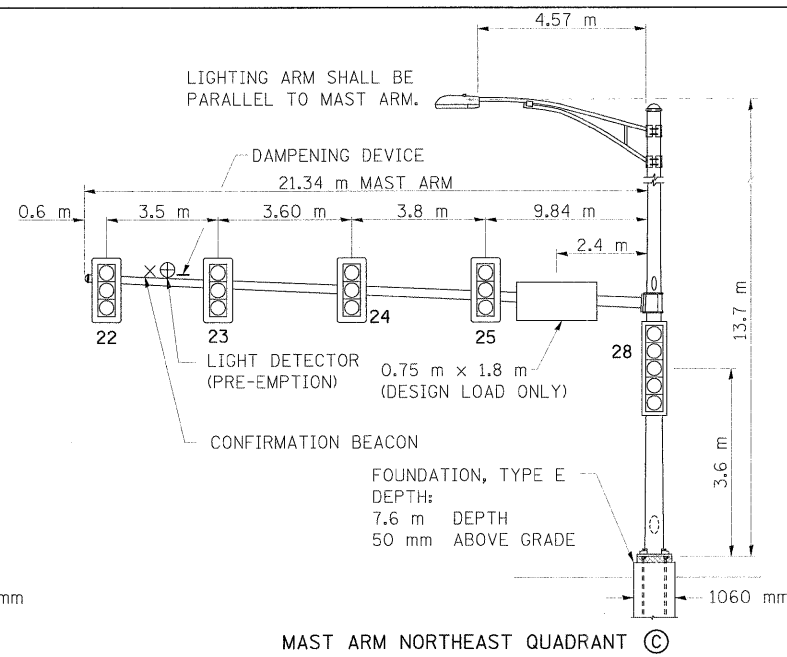


F.A.P. RTE.	SECTION	COUNTY	TOTAL SHEETS	SHEET NO.
326	*	KENDALL	931	617
STA. N/A		TO STA. N/A		
FED. ROAD DIST. NO. 5		ILLINOIS FED. AID PROJECT		

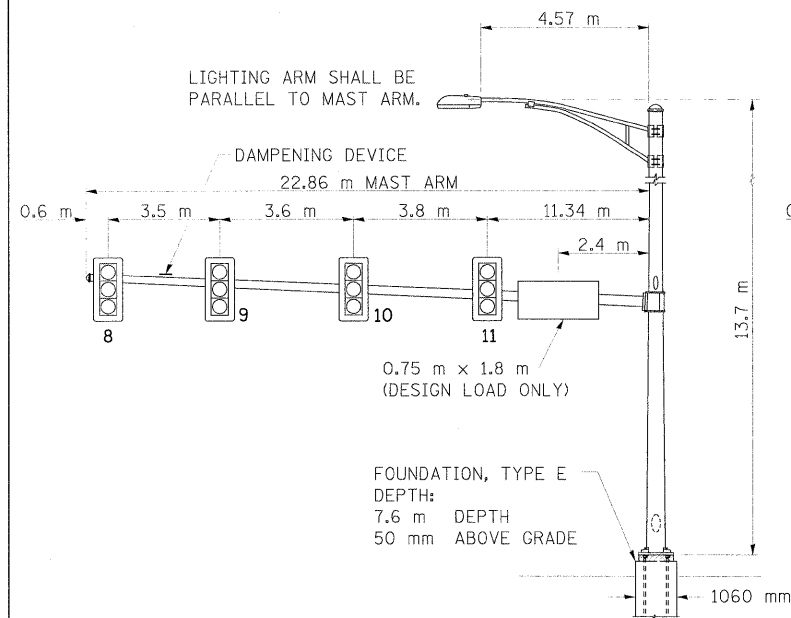
*15CS, 13C, 108, 109IR



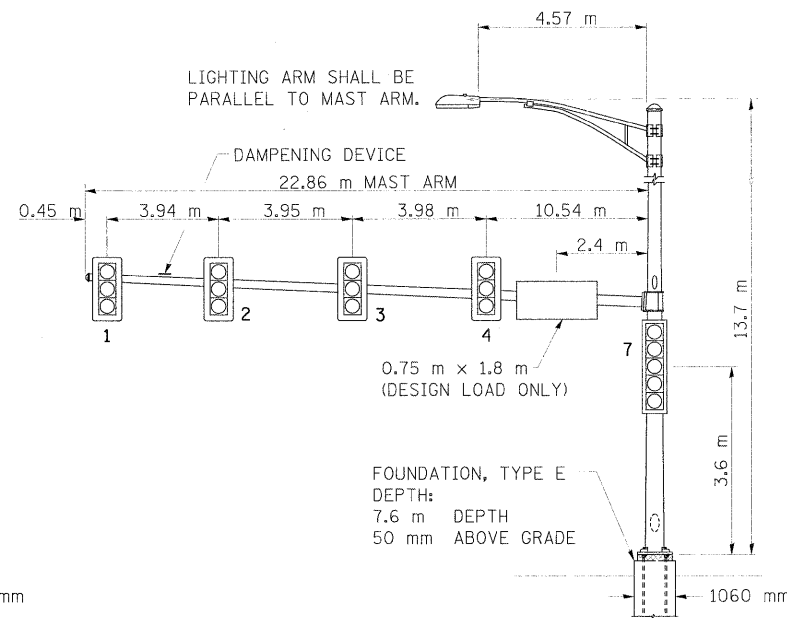
MAST ARM NORTHWEST QUADRANT (A)



MAST ARM NORTHEAST QUADRANT (C)



MAST ARM SOUTHWEST QUADRANT (G)



MAST ARM SOUTHEAST QUADRANT (E)

ELECTRICAL LOAD CHART

IL ROUTE 47

INDICATION	NUMBER	WATTAGE EACH	BURN TIME (%)
RED	8	12	60
YELLOW	8	32	5
GREEN	8	12	35
RED ARROW	6	12	60
YELLOW ARROW	10	12	5
GREEN ARROW	10	11	10
↑	4	7	5
↓	4	7	95

US ROUTE 34

RED	8	12	60
YELLOW	8	32	5
GREEN	8	12	35
RED ARROW	6	12	60
YELLOW ARROW	10	12	5
GREEN ARROW	10	11	10
↑	4	7	5
↓	4	7	95

TRAFFIC SIGNAL CABINET

ITEM	NUMBER	WATTAGE EACH	BURN TIME (%)
MASTER CONTROLLER	1	6	100
INDUCTIVE LOOP DETECTOR	28	1.5	100
UNINTERRUPTIBLE POWER SUPPLY	1	50	100
LIGHT DETECTOR AMPLIFIER	1	1.5	100

HIGHWAY LIGHTING

ITEM	NUMBER	WATTAGE EACH	BURN TIME (%)
CONTROLLER	1	6	100
LUMINAIRE	4	400	45

SEE CABLE DIAGRAM FOR DAMPENING PLATE DETAIL.

GRANULAR SOILS ARE EXPECTED TO BE ENCOUNTERED AT THIS INTERSECTION.

NOTIFY THE TRAFFIC SIGNAL SECTION AT (815) 434-8506 72 HOURS IN ADVANCE TO REDESIGN THE DETECTOR LOOPS, IF POSSIBLE, TO AVOID CONSTRUCTION JOINTS.

- NOTES:
- WORD "GRADE" IS TO BE INTERPRETED AS TOP OF CURB. TOP OF FOUNDATION SHALL NOT BE EXPOSED MORE THAN 100 mm ABOVE THE SURROUNDING GROUND.
 - ALL SIGNAL HEADS SHALL HAVE BACKPLATES.

DETECTOR LOOP INDUCTANCE CHART

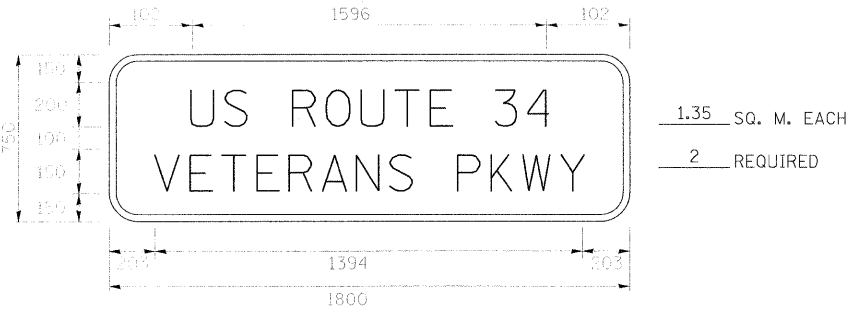
DETECTOR LOOP SYSTEM	TURNS PER LOOP	INDUCTANCE READING (MICROHENRIES)	FREQUENCY (HERTZ)	J PIN STATUS
A	4	468	28,194	OFF
B	4	464	28,315	ON
C	4	566	25,637	OFF
D	6	602	24,875	ON
E	4	566	25,637	ON
F	4	569	25,569	ON
G	4	566	25,637	ON
H	4	569	25,569	ON
I	4	502	27,222	OFF
J	4	498	27,331	ON
K	4	601	24,879	OFF
L	6	643	24,069	ON
M	4	861	20,786	ON
N	4	861	20,786	ON
O	4	466	28,254	OFF
P	4	461	28,407	ON
Q	4	558	25,820	OFF
R	6	598	24,958	ON
S	4	558	25,820	ON
T	4	559	25,797	ON
U	4	558	25,820	ON
V	4	559	25,797	ON
W	4	427	29,516	OFF
X	4	427	29,516	ON
Y	4	529	26,518	OFF
Z	5	416	29,924	ON
AA	4	790	21,700	ON
BB	4	790	21,700	ON

- NOTES CONT.:
- FOUNDATION SHOULD BE 50mm ABOVE GRADE OR 0.35mm ABOVE CENTERLINE OF ROADWAY, WHICHEVER IS HIGHER.
 - FOUR ROUTE SIGNS WILL BE FURNISHED BY THE ILLINOIS DEPARTMENT OF TRANSPORTATION.

STREET SIGN DETAIL

STREET NAME SIGNS SHALL BE PLACED ON THE MAST ARMS PARALLEL TO THE RESPECTIVE ROUTE AS DIRECTED BY THE ENGINEER.

- STREET NAME SIGNS:
- TYPE ZZ SHEETING REQUIRED
 - WHITE/GREEN BACKGROUND
 - STYLE (d)-15 mm BORDER
 - 200 mm SERIES D LETTERS EXCEPT "VETERANS PKWY" USE SERIES C 150 mm
 - ALL DIMENSIONS ARE IN MILLIMETERS UNLESS OTHERWISE SHOWN



NOTE: TRAILBLAZER SIGNS AS SHOWN SHALL BE PLACED ON MAST ARM POSTS AS DIRECTED BY THE ENGINEER.



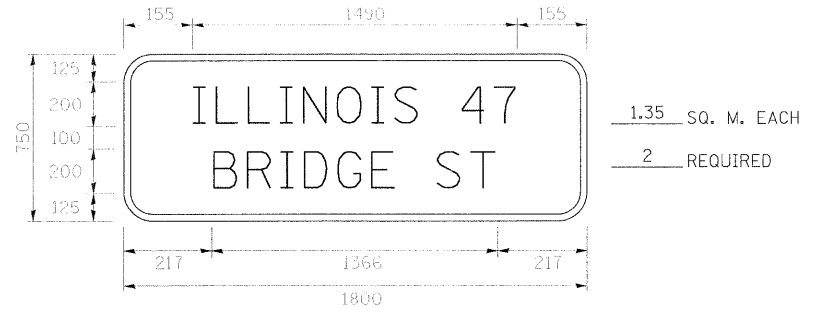
0.18 SQ. M. EACH
1 REQUIRED



0.18 SQ. M. EACH
1 REQUIRED



0.36 SQ. M. EACH
2 REQUIRED



PEDESTRIAN CROSSING SIGN DETAIL

COUNT-DOWN PEDESTRIAN SIGN R10-3e TO BE USED.

16 REQUIRED.

DIMENSIONS: 230mm x 380mm (TYP.)
LEGEND AND BORDER: NON-REFLECTORIZED BLACK
BACKGROUND: RETROREFLECTIVE WHITE
NUMBERS AND SYMBOLS: RETROREFLECTIVE ORANGE

ONE SIGN SHALL BE PROVIDED FOR EACH PUSH-BUTTON.
ORIENTATION OF DIRECTIONAL ARROWS TO BE DETERMINED BY PUSH-BUTTON LOCATION.

ALL MOUNTING HARDWARE SHALL BE STAINLESS STEEL CONSTRUCTION. ALL MOUNTING BOLTS SHALL BE HEX HEAD.

MATERIALS AND INSTALLATION OF THIS SIGN SHALL BE INCLUDED IN THE COST OF PEDESTRIAN PUSH-BUTTON.

REVISIONS	
NAME	DATE

ILLINOIS DEPARTMENT OF TRANSPORTATION
MAST ARM LOADING DIAGRAM
ELECTRICAL LOAD CHART
SIGN DETAILS
IL. 47 (BRIDGE ST.)/
U.S. 34 (VETERANS PKWY)

SCALE: NONE
DATE: MARCH, 2010

DRAWN BY: SL
CHECKED BY: KC

PLOT DATE = 8/11/2011
FILE NAME = H:\S122\design\617134_mast.dgn
PLOT SCALE = 6:3000 mm/IN.
USER NAME = JBERDESOR.