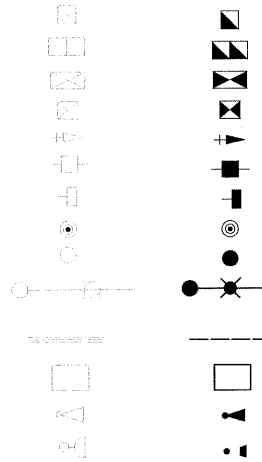


F.A. RTE.	SECTION	COUNTY	TOTAL SHEETS	SHEET NO.
326		KENDALL	931	625
STA. N/A		TO STA. N/A		
FED. ROAD DIST. NO. 5		ILLINOIS FED. AID PROJECT		
*15CS, 13C, 10B, 1091R				

TRAFFIC SIGNAL LEGEND

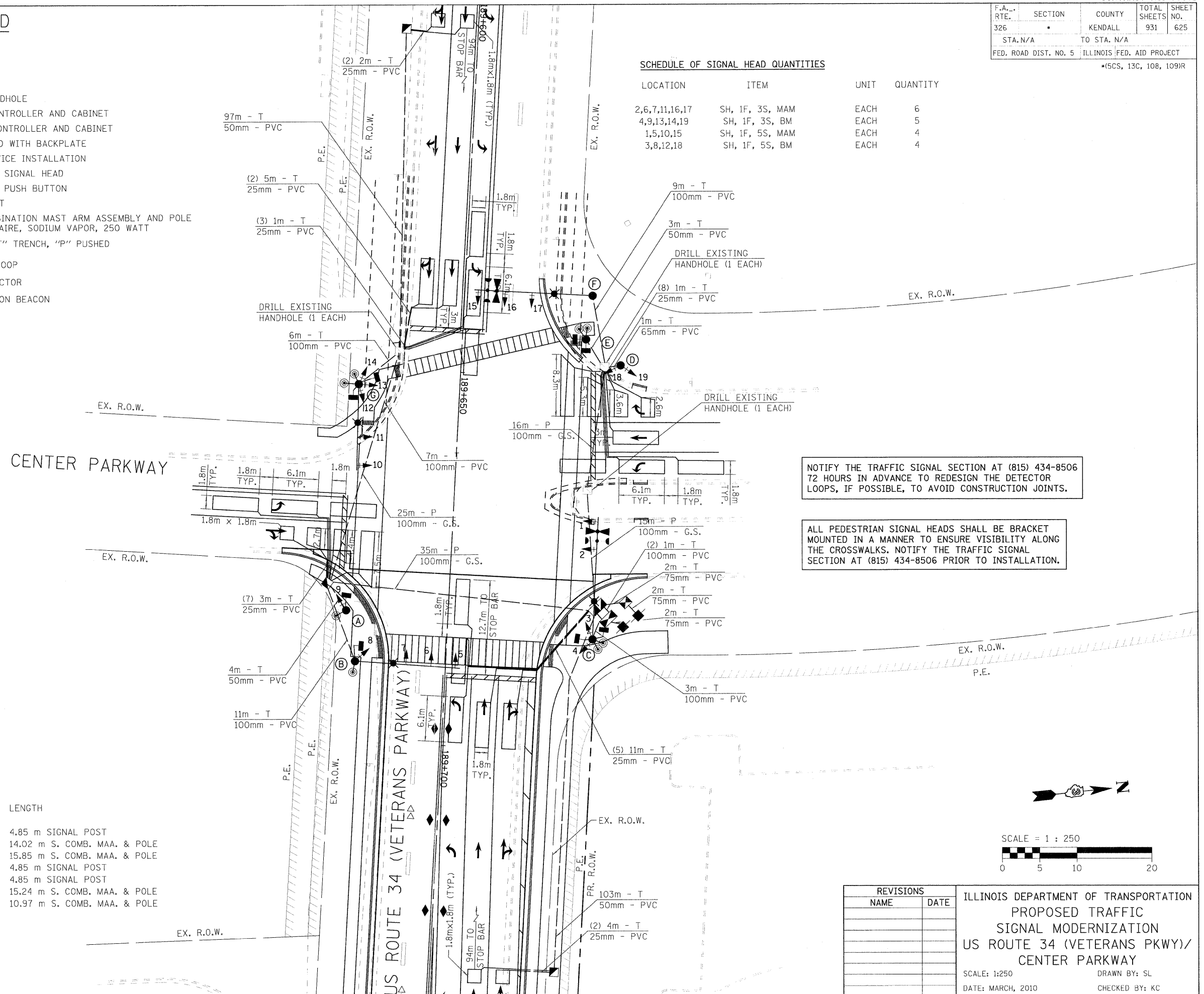
EXISTING PROPOSED



- HANDHOLE
- DOUBLE HANDHOLE
- TRAFFIC CONTROLLER AND CABINET
- LIGHTING CONTROLLER AND CABINET
- SIGNAL HEAD WITH BACKPLATE
- POWER SERVICE INSTALLATION
- PEDESTRIAN SIGNAL HEAD
- PEDESTRIAN PUSH BUTTON
- SIGNAL POST
- STEEL COMBINATION MAST ARM ASSEMBLY AND POLE WITH LUMINAIRE, SODIUM VAPOR, 250 WATT
- CONDUIT: "T" TRENCH, "P" PUSHED
- DETECTOR LOOP
- LIGHT DETECTOR
- CONFIRMATION BEACON

SCHEDULE OF SIGNAL HEAD QUANTITIES

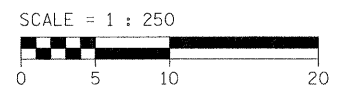
LOCATION	ITEM	UNIT	QUANTITY
2,6,7,11,16,17	SH, 1F, 3S, MAM	EACH	6
4,9,13,14,19	SH, 1F, 3S, BM	EACH	5
1,5,10,15	SH, 1F, 5S, MAM	EACH	4
3,8,12,18	SH, 1F, 5S, BM	EACH	4



NOTIFY THE TRAFFIC SIGNAL SECTION AT (815) 434-8506 72 HOURS IN ADVANCE TO REDESIGN THE DETECTOR LOOPS, IF POSSIBLE, TO AVOID CONSTRUCTION JOINTS.

ALL PEDESTRIAN SIGNAL HEADS SHALL BE BRACKET MOUNTED IN A MANNER TO ENSURE VISIBILITY ALONG THE CROSSWALKS. NOTIFY THE TRAFFIC SIGNAL SECTION AT (815) 434-8506 PRIOR TO INSTALLATION.

LOCATION	LENGTH
A	4.85 m SIGNAL POST
B	14.02 m S. COMB. MAA. & POLE
C	15.85 m S. COMB. MAA. & POLE
D	4.85 m SIGNAL POST
E	4.85 m SIGNAL POST
F	15.24 m S. COMB. MAA. & POLE
G	10.97 m S. COMB. MAA. & POLE



REVISIONS	
NAME	DATE

ILLINOIS DEPARTMENT OF TRANSPORTATION
 PROPOSED TRAFFIC
 SIGNAL MODERNIZATION
 US ROUTE 34 (VETERANS PKWY)/
 CENTER PARKWAY
 SCALE: 1:250 DRAWN BY: SL
 DATE: MARCH, 2010 CHECKED BY: KC