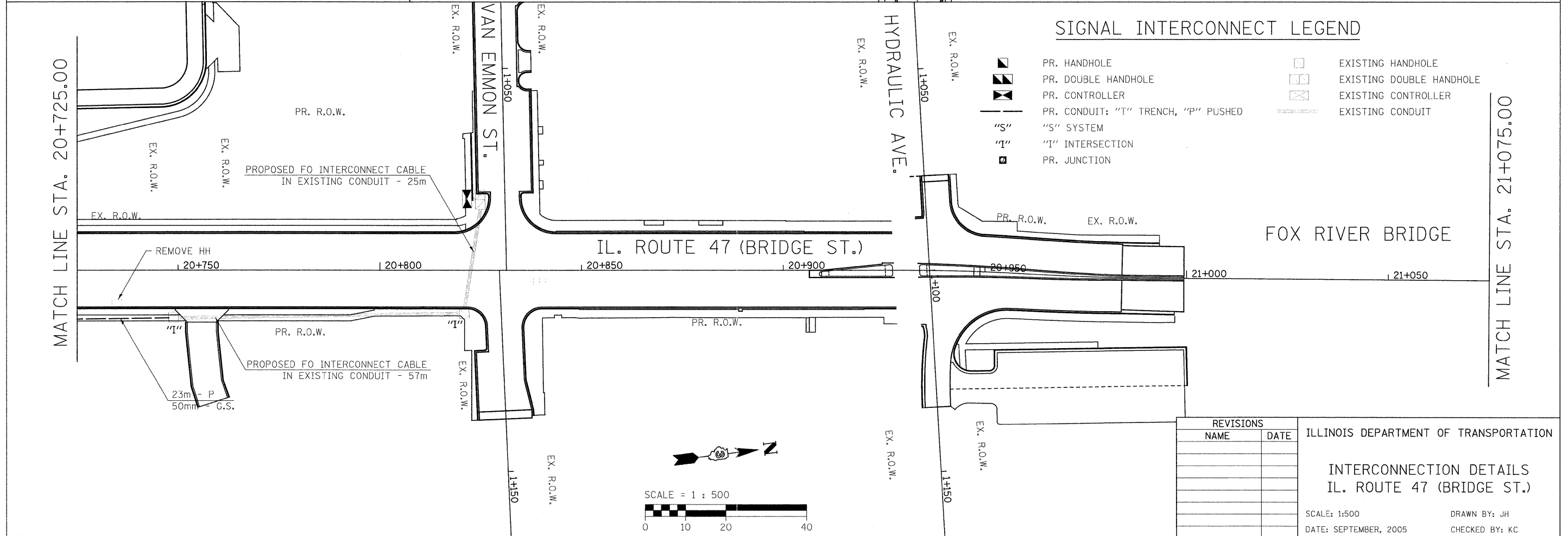
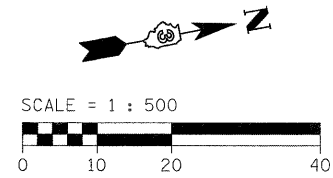
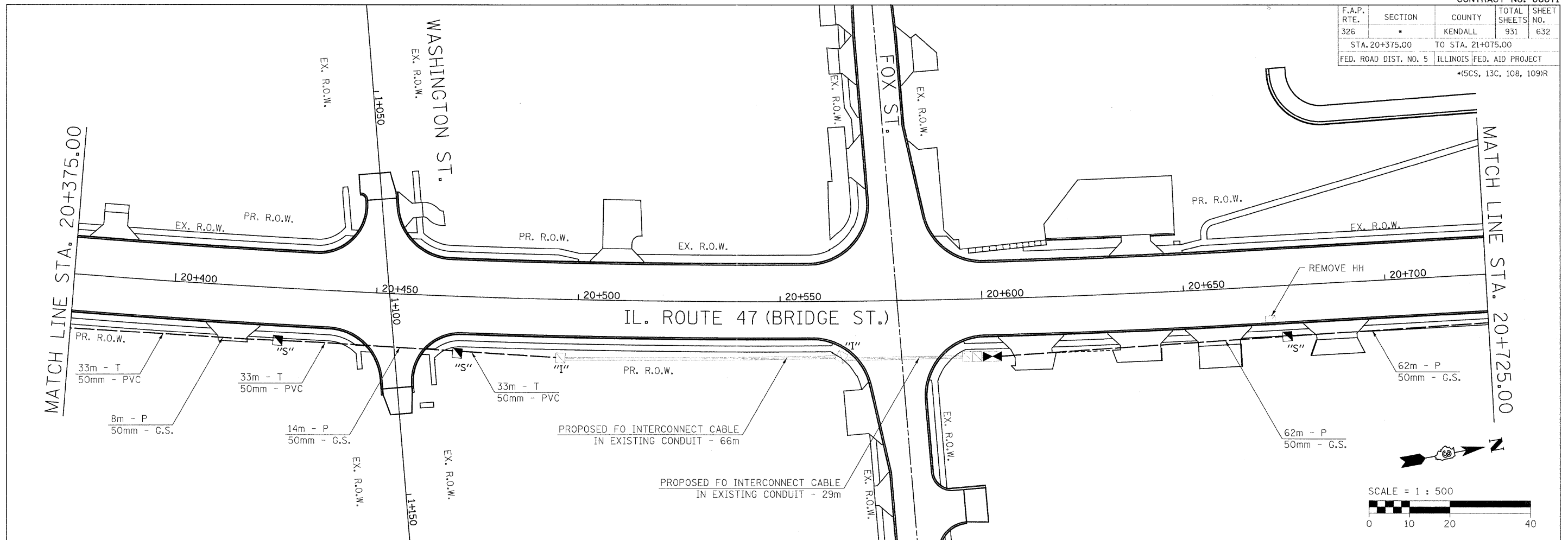


F.A.P. RTE.	SECTION	COUNTY	TOTAL SHEETS	SHEET NO.
326	*	KENDALL	931	632
STA. 20+375.00		TO STA. 21+075.00		
FED. ROAD DIST. NO. 5		ILLINOIS FED. AID PROJECT		

*5CS, 13C, 10B, 109R



SIGNAL INTERCONNECT LEGEND

- PR. HANDHOLE
- PR. DOUBLE HANDHOLE
- PR. CONTROLLER
- PR. CONDUIT: "T" TRENCH, "P" PUSHED
- "S" SYSTEM
- "I" INTERSECTION
- PR. JUNCTION
- EXISTING HANDHOLE
- EXISTING DOUBLE HANDHOLE
- EXISTING CONTROLLER
- EXISTING CONDUIT

REVISIONS	
NAME	DATE

ILLINOIS DEPARTMENT OF TRANSPORTATION

INTERCONNECTION DETAILS
IL. ROUTE 47 (BRIDGE ST.)

SCALE: 1:500
DATE: SEPTEMBER, 2005

DRAWN BY: JH
CHECKED BY: KC

