


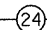

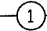

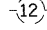
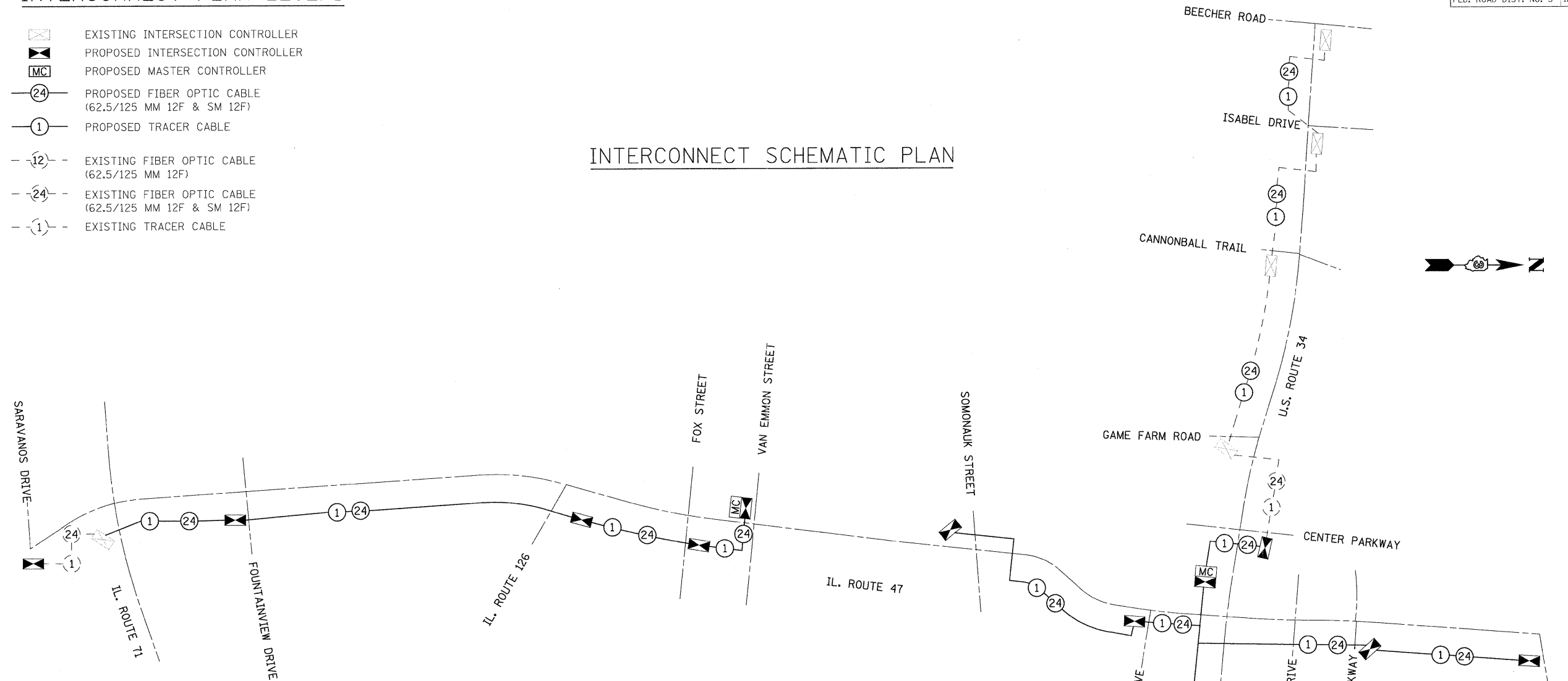


F.A.P. RTE.	SECTION	COUNTY	TOTAL SHEETS	SHEET NO.
326	•	KENDALL	931	639
STA. N/A		TO STA. N/A		
FED. ROAD DIST. NO. 5		ILLINOIS FED. AID PROJECT		
*15CS, 13C, 10B, 109R				

INTERCONNECT PLAN LEGEND

-  EXISTING INTERSECTION CONTROLLER
-  PROPOSED INTERSECTION CONTROLLER
-  PROPOSED MASTER CONTROLLER
-  PROPOSED FIBER OPTIC CABLE (62.5/125 MM 12F & SM 12F)
-  PROPOSED TRACER CABLE
-  EXISTING FIBER OPTIC CABLE (62.5/125 MM 12F)
-  EXISTING FIBER OPTIC CABLE (62.5/125 MM 12F & SM 12F)
-  EXISTING TRACER CABLE

INTERCONNECT SCHEMATIC PLAN



SCHEDULE OF QUANTITIES

DESCRIPTION	UNIT	QUANTITY
SERVICE INSTALLATION - GROUND MOUNTED	EACH	2
HANDHOLE, PORTLAND CEMENT CONCRETE	EACH	41
MAINTENANCE OF EXISTING TRAFFIC SIGNAL INSTALLATION	EACH	19
MASTER CONTROLLER	EACH	2
UNINTERRUPTIBLE POWER SUPPLY, EXTENDED	EACH	1
TRANSCEIVER - FIBER OPTIC	EACH	5
MODIFY EXISTING CONTROLLER AND CABINET	EACH	9
REMOVE EXISTING HANDHOLE	EACH	3
CONDUIT IN TRENCH, 50MM DIA., PVC	METER	2973
CONDUIT IN TRENCH, 100MM DIA., PVC	METER	2
CONDUIT PUSHED, 50MM DIA., GALVANIZED STEEL	METER	738
TRENCH AND BACKFILL FOR ELECTRICAL WORK	METER	2975
CONCRETE FOUNDATION, TYPE C	METER	1.2
REMOVE AND REINSTALL ELECTRIC CABLE FROM CONDUIT	METER	250
ELECTRIC CABLE IN CONDUIT, TRACER	METER	5079
ELECTRIC CABLE IN CONDUIT, 600V (XLP-TYPE USE) 1/C NO. 6	METER	5079
TEMPORARY TRAFFIC SIGNAL TIMING	EACH	12
TEMPORARY TRAFFIC SIGNAL INTERCONNECT - SYSTEM I	EACH	1
TEMPORARY TRAFFIC SIGNAL INTERCONNECT - SYSTEM II	EACH	1
TEMPORARY TRAFFIC SIGNAL INTERCONNECT - SYSTEM III	EACH	1
FIBER OPTIC CABLE IN CONDUIT, NO 62.5/125, MM 24F, SM 24F	METER	5079
TEMPORARY RE-OPTIMIZATION OF EXISTING TRAFFIC SIGNAL SYSTEM	L SUM	1
RE-OPTIMIZE TRAFFIC SIGNAL SYSTEM	L SUM	1
FULL-ACTUATED CONTROLLER AND TYPE IV CABINET, SPECIAL	EACH	1
INDUCTIVE LOOP DETECTOR	EACH	8
REMOVE ELECTRIC CABLE FROM CONDUIT	METER	250
REMOVE EXISTING TRAFFIC SIGNAL EQUIPMENT	EACH	1

NOTE:

1. DRILL EXISTING HANDHOLE FOR INTERCONNECT CONDUIT SHALL BE CONSIDERED AS INCIDENTAL TO THE PAY ITEM FOR CONDUIT.

REVISIONS	
NAME	DATE

ILLINOIS DEPARTMENT OF TRANSPORTATION

**INTERCONNECT SCHEMATIC PLAN
SCHEDULE OF QUANTITIES**

SCALE: 1:500
DATE: SEPTEMBER, 2005

DRAWN BY: JH
CHECKED BY: KC