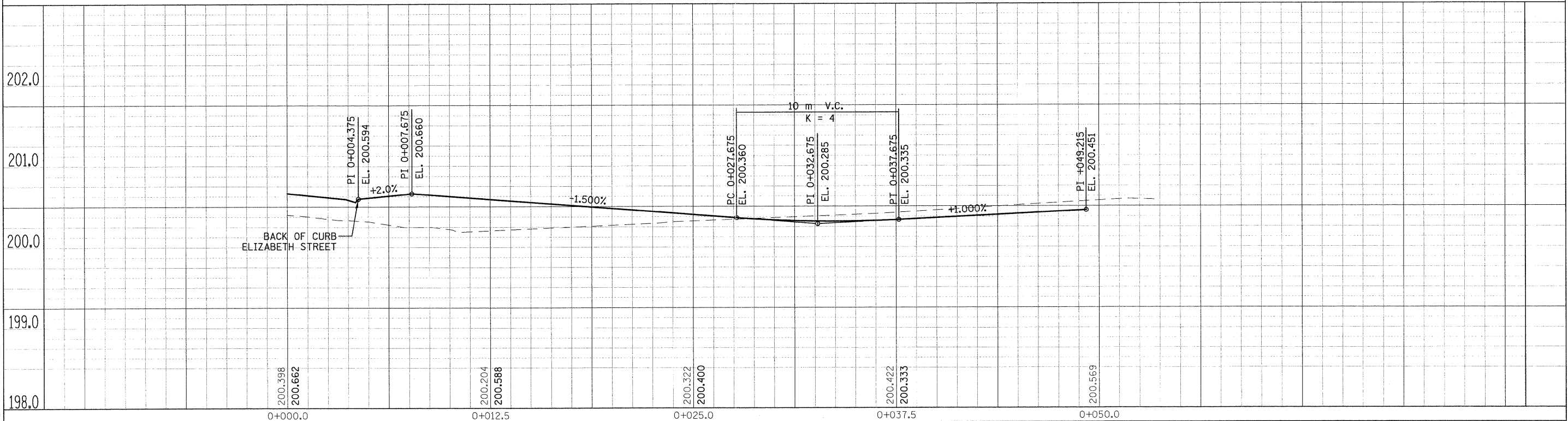
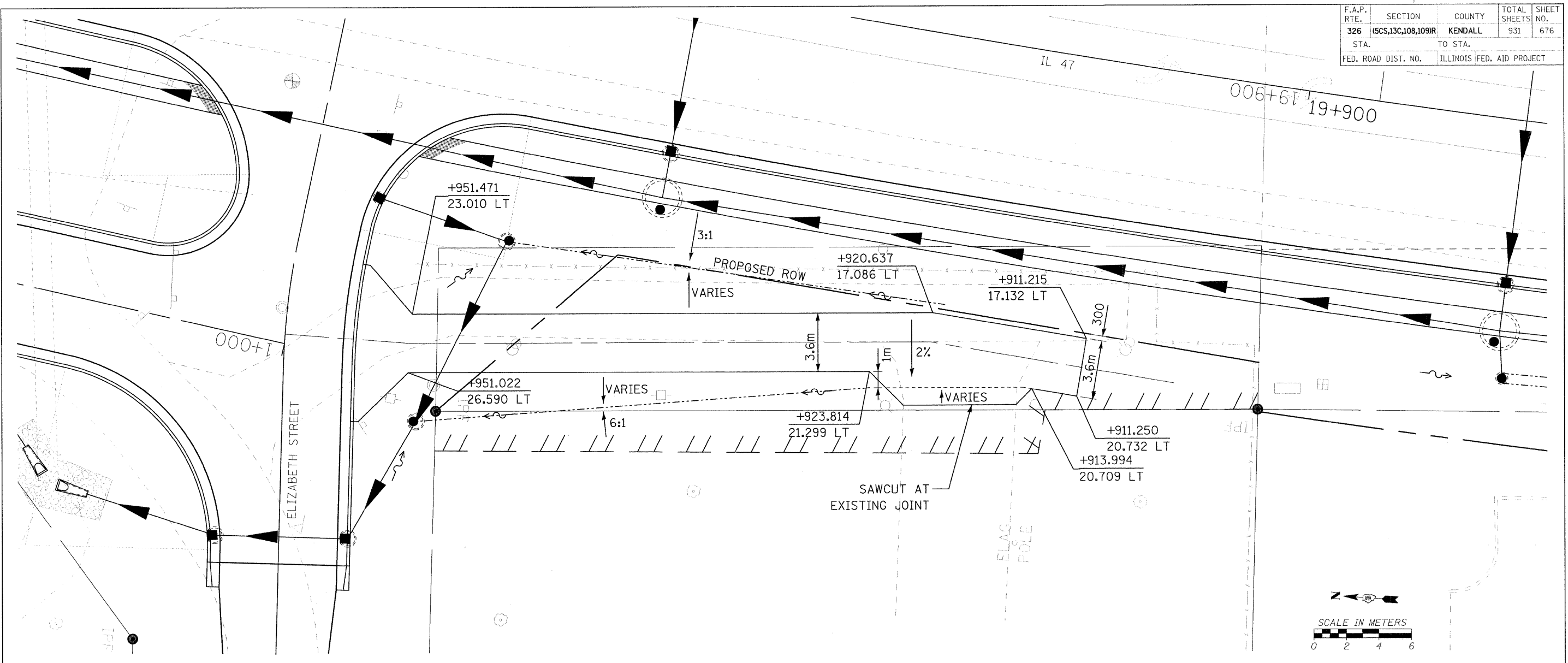


F.A.P. RTE.	SECTION	COUNTY	TOTAL SHEETS	SHEET NO.
326	(6CS,13C,108,109)R	KENDALL	931	676
STA.		TO STA.		
FED. ROAD DIST. NO.		ILLINOIS FED. AID PROJECT		



FILE: 676DET_SHT_STA19+950.dgn
PLOTTED: 8/11/2011

HMG JOB NO. 5122