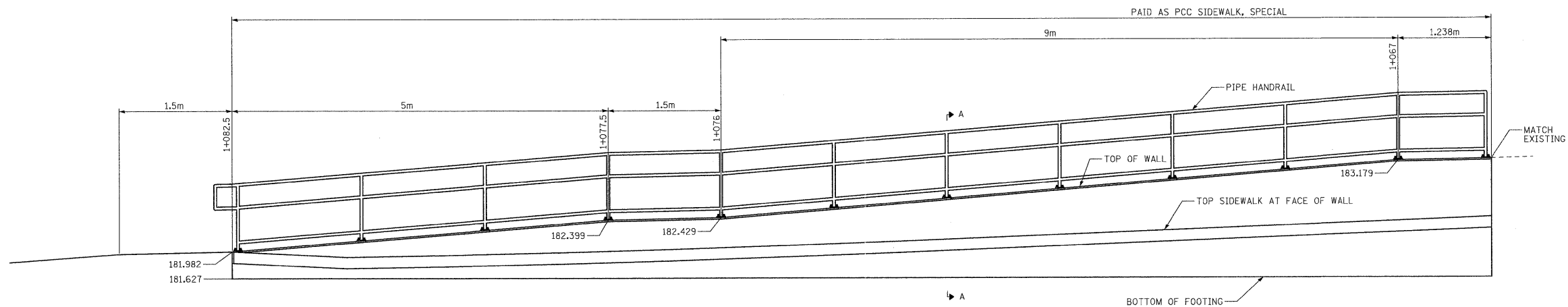
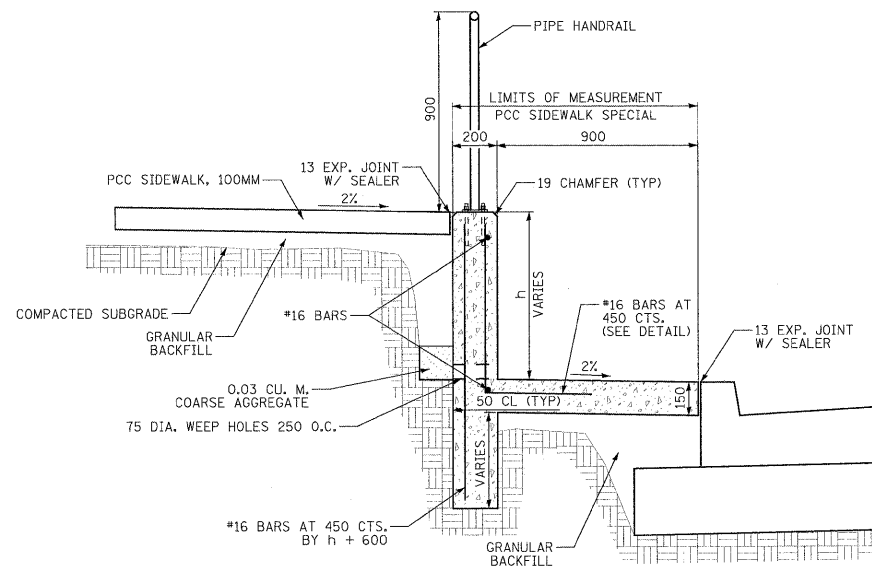


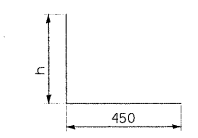
F.A.P. RTE.	SECTION	COUNTY	TOTAL SHEETS	SHEET NO.
326	(5CS,13C,108,109)R	KENDALL	931	681
STA.		TO STA.		
FED. ROAD DIST. NO.		ILLINOIS FED. AID PROJECT		



ELEVATION



SECTION A-A



BENT BAR DETAIL

FILE: 679-688DET_SHT_downtown_details.dgn
PLOTTED: 8/11/2011

HMG JOB NO. 5122

REVISIONS		ILLINOIS DEPARTMENT OF TRANSPORTATION
NAME	DATE	
		VAN EMMON STREET ELEVATED SIDEWALK DETAILS DRAWN BY CHECKED BY DATE