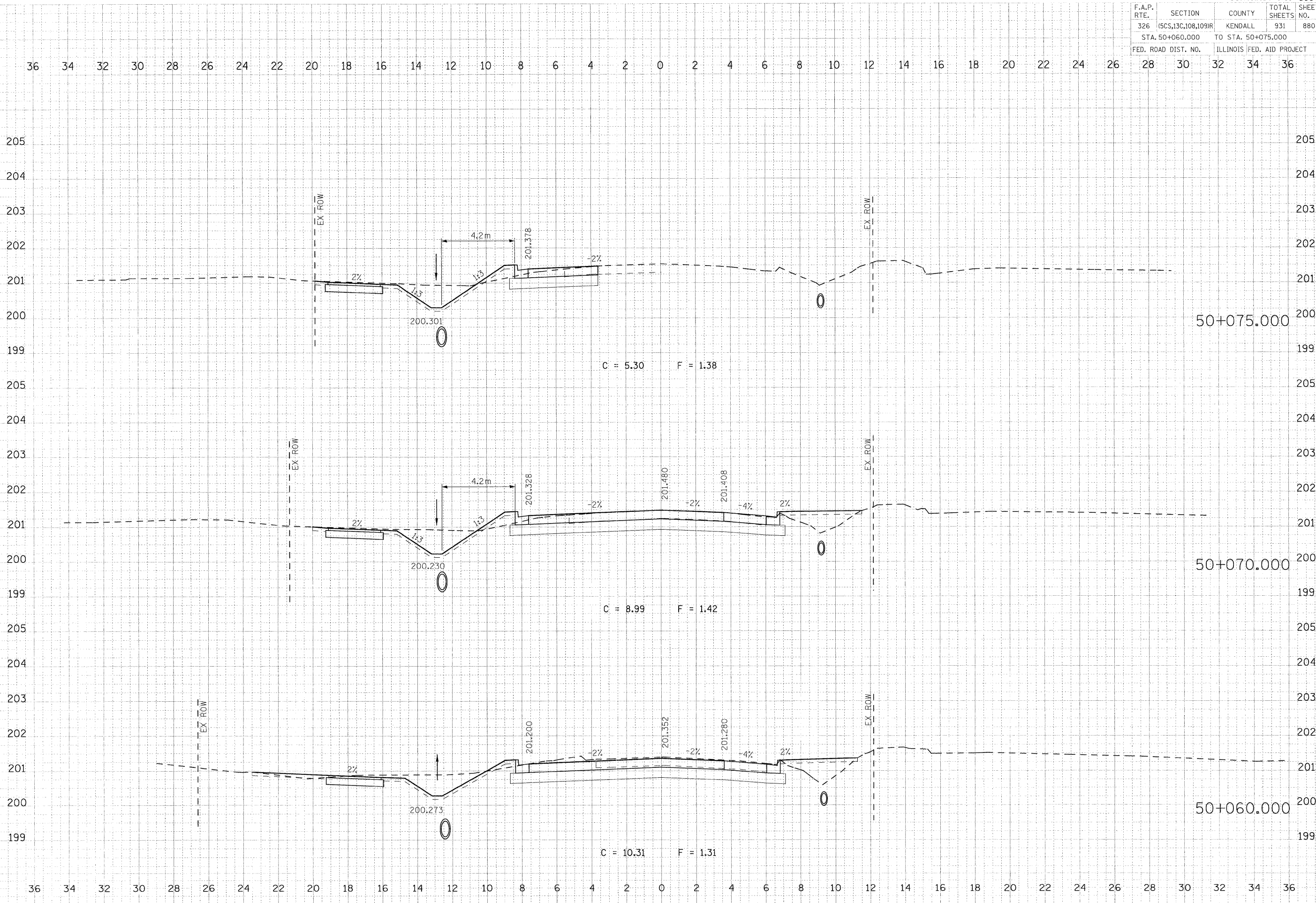


F.A.P. RTE.	SECTION	COUNTY	TOTAL SHEETS	SHEET NO.
326	(SCS,13C,108,109)R	KENDALL	931	880
STA. 50+060.000		TO STA. 50+075.000		
FED. ROAD DIST. NO.		ILLINOIS FED. AID PROJECT		



C = 5.30 F = 1.38

C = 8.99 F = 1.42

C = 10.31 F = 1.31

DATE	BY	REVISION

DATE	BY	REVISION

PLOT DATE = 07/26/2011
 FILE NAME = 879...
 PLOT SCALE = 0.1000 MM
 USER NAME = USERDESCR