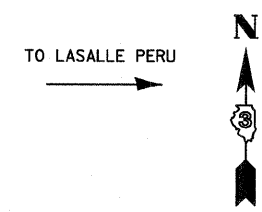
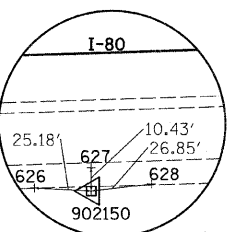
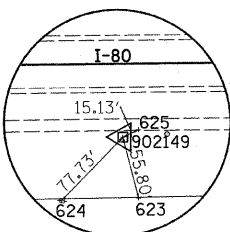
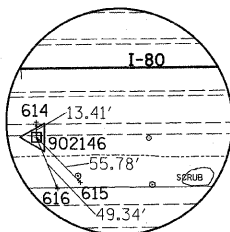
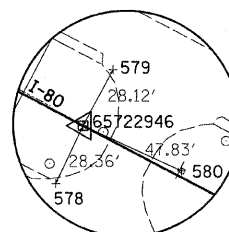
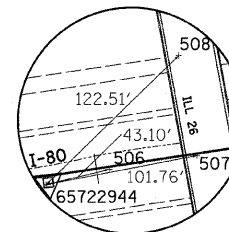
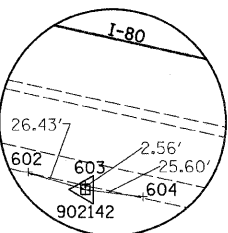
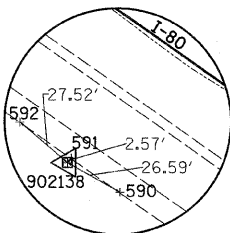
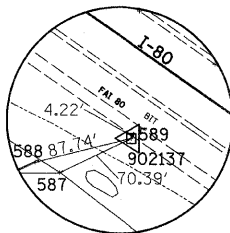
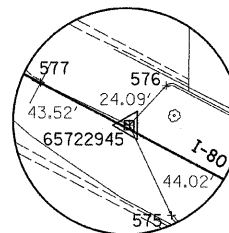
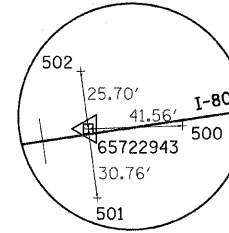
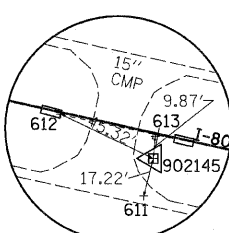
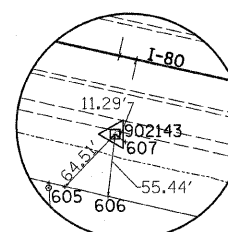
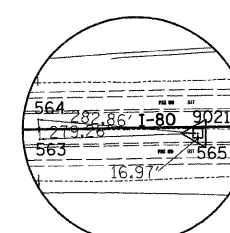
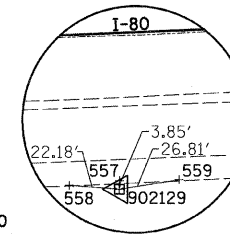
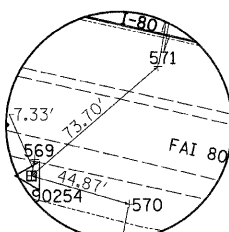
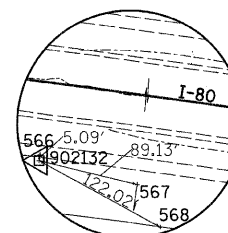
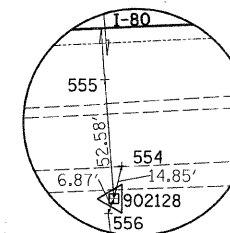
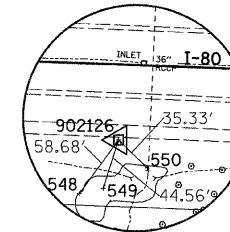
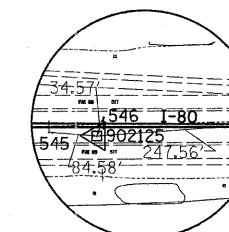
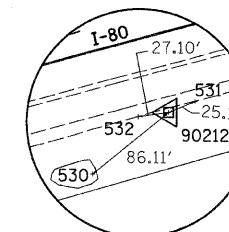
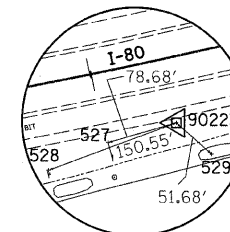
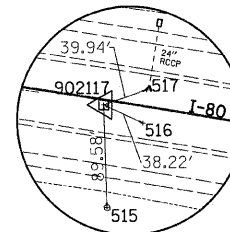
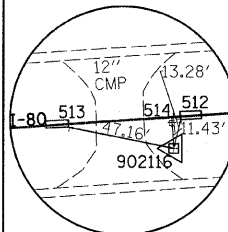
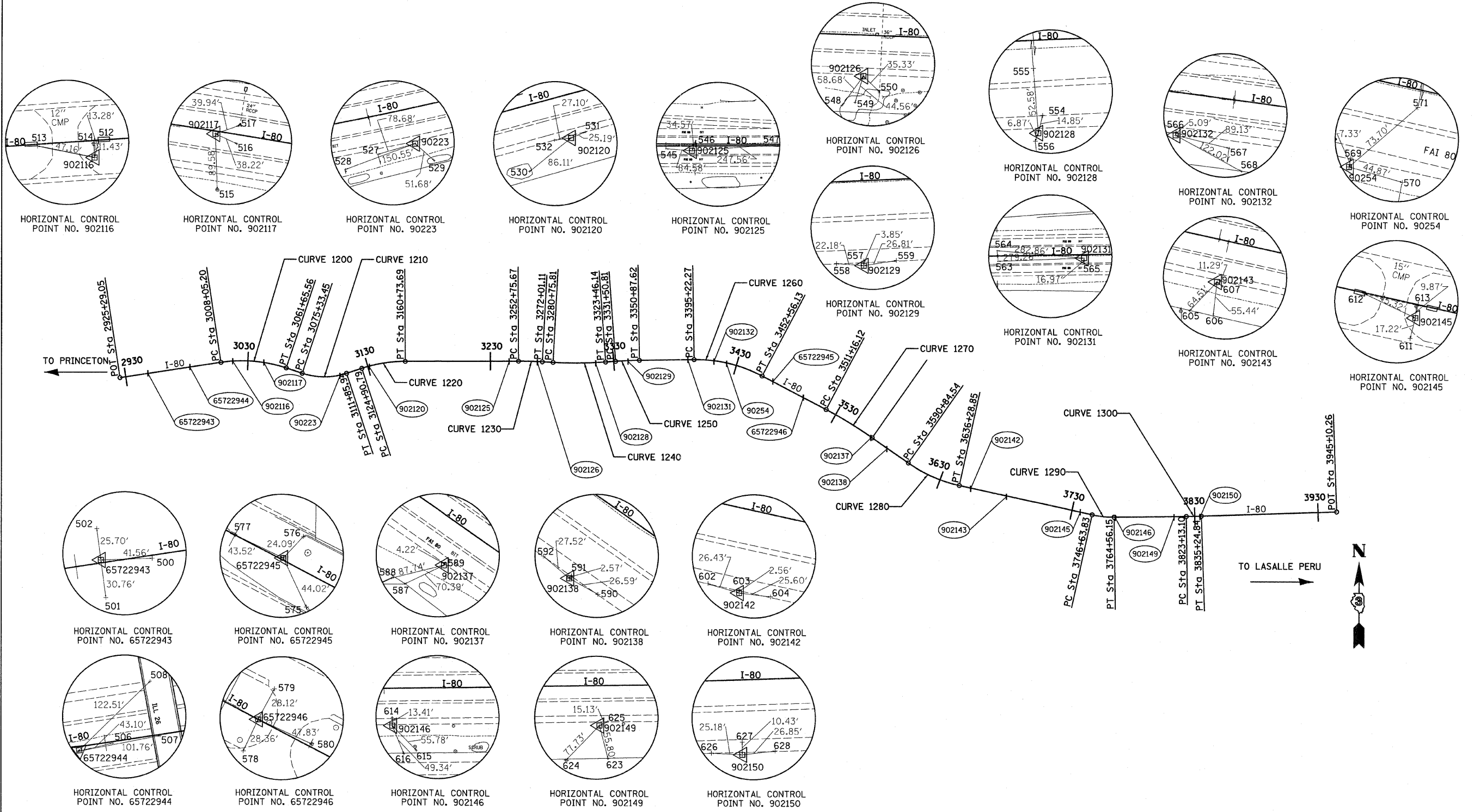


ALIGNMENT AND SURVEY TIES FOR CONTROL POINT DATA



TYLIN INTERNATIONAL

USER NAME =  
PLOT SCALE =  
PLOT DATE =

DESIGNED - CAC  
DRAWN - CAC  
CHECKED - JDF  
DATE - 9/7/2011

REVISED -  
REVISED -  
REVISED -  
REVISED -

STATE OF ILLINOIS  
DEPARTMENT OF TRANSPORTATION

F.A.I. ROUTE 80 (I-80)  
ALIGNMENT AND SURVEY TIES FOR CONTROL POINTS

F.A.I. RTE.	SECTION	COUNTY	TOTAL SHEETS	SHEET NO.
80	[06-5]HBR-1.VBR(06-6)RS-3&I	BUREAU	249	20
FED. ROAD DIST. NO. ILLINOIS FED. AID PROJECT			CONTRACT NO. 66686	

P:\602429\I-80\Road\602429\_10\_A\Z04002ALI01.dgn

P:\602429\I-80\Road\602429\_10\_A\Z04002ALI01.dgn 7/28/07 PM