

Bench Mark: BM #417 Set at Headwall, Sta. 3043+40.14 Offset 71.14 El. 697.29

Existing Structure: S.N. 006-0020 EB and 006-0021 WB. Built as F.A.I. Rt. 80, in 1962. The superstructure consists of a 136'-6" (back to back of abutments) by 43'-8" wide reinforced concrete deck supported on three span continuous Rolled Steel Beams. Existing structure to be rehabilitated using crossovers.

Salvage: None.

DESIGN SPECIFICATION

AASHTO 2002 Standard Specifications for Highway Bridges

LOADING HS20-44 & ALT. MILITARY

Allow 50 #/sq. ft. for Future Wearing Surface.

DESIGN STRESSES

FIELD UNITS (New Construction)

f'c = 3,500 psi
fy = 60,000 psi (Reinforcement)
fy = 50,000 psi (Structural Steel)

FIELD UNITS (Existing Construction)

f'c = 3,500 psi
fy = 40,000 psi (Reinforcement)

SEISMIC DATA

Seismic Performance Category (SPC) = A
Bedrock Acceleration Coefficient = 0.036g
Site Coefficient = 1.0

STATION 3070+32.00
REBUILT 2011 BY
STATE OF ILLINOIS
F.A.I. RTE 80
SEC. [(06-5)HBR-1,VBR;(06-6)JRS-3&I]
LOADING HS20 & ALT
STR. NO. 006-0020

STATION 3070+32.00
REBUILT 2011 BY
STATE OF ILLINOIS
F.A.I. RTE 80
SEC. [(06-5)HBR-1,VBR;(06-6)JRS-3&I]
LOADING HS20 & ALT
STR. NO. 006-0021

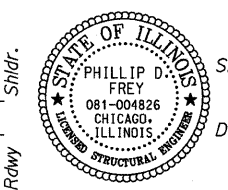
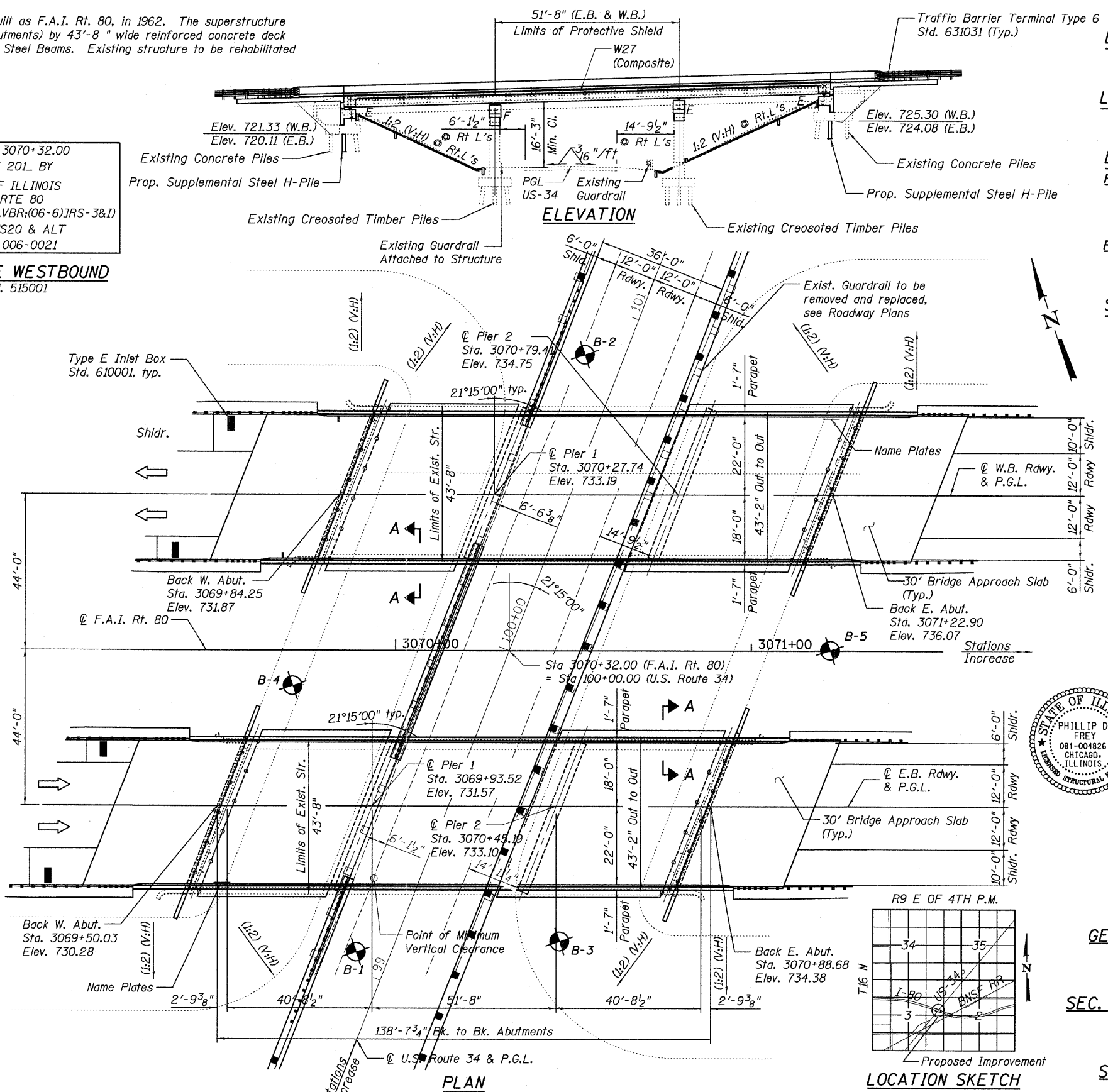
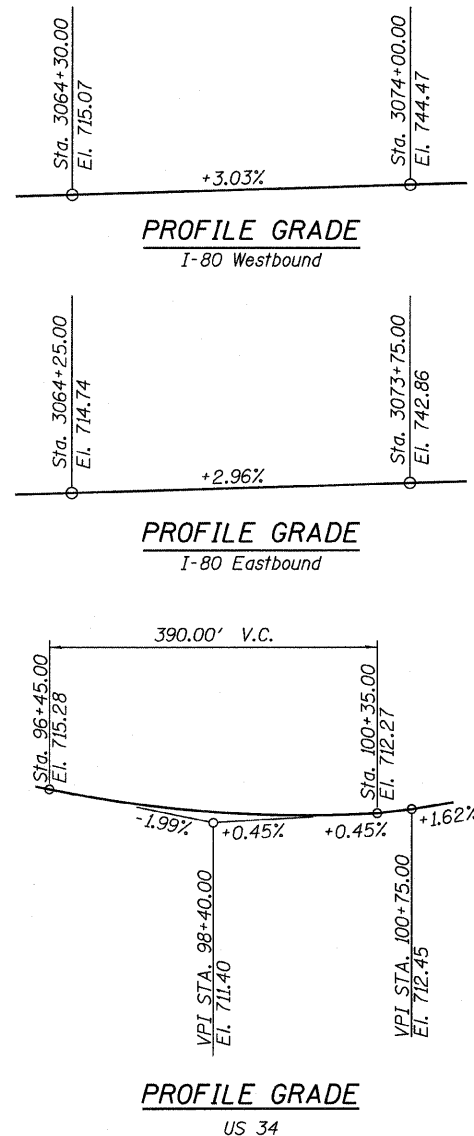
NAME PLATE EASTBOUND

See Std. 515001

NAME PLATE WESTBOUND

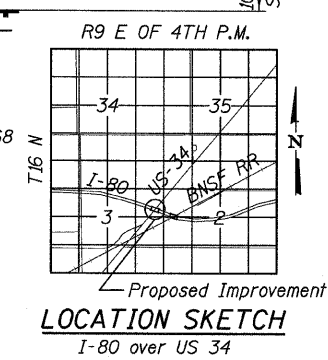
See Std. 515001

Note: Existing name plate shall be cleaned and relocated next to new name plate. Cost included with Name Plates.



Signed *Phillip D. Frey*
Phillip D. Frey, S.E. Il. Lic. No. 081-004826
Expires 11-30-2012
Date 9/14/2011

APPROVED
FOR STRUCTURAL ADEQUACY ONLY
[Signature]
ENGINEER OF BRIDGES AND STRUCTURES



GENERAL PLAN AND ELEVATION
I-80 OVER US 34
F.A.I. RTE 80
SEC. [(06-5)HBR-1,VBR;(06-6)JRS-3&I
BUREAU COUNTY
STATION 3070+32.00
STRUCTURE NO. 006-0020 EB
AND 006-0021 WB

FILE NAME =	USER NAME =	DESIGNED - MAF, TB, SP	REVISED -	STATE OF ILLINOIS DEPARTMENT OF TRANSPORTATION	STRUCTURE NO. 006-0020 EB AND 006-0021 WB	SHEET NO. 1 OF 37 SHEETS
TYLIN INTERNATIONAL	CHECKED - PF	REVISED -	F.A.I. RTE. 80			
PLOT SCALE =	DRAWN - MAF, TB, SP	REVISED -	SECTION [(06-5)HBR-1,VBR;(06-6)JRS-3&I]			
PLOT DATE = 09/13/2011	CHECKED - PF	REVISED -	COUNTY BUREAU	TOTAL SHEETS 24	SHEET NO. 18	CONTRACT NO. 66686

ILLINOIS FED. AID PROJECT