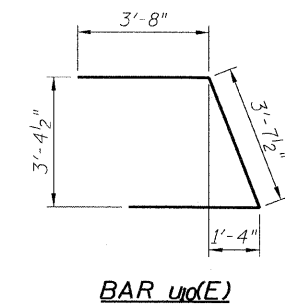
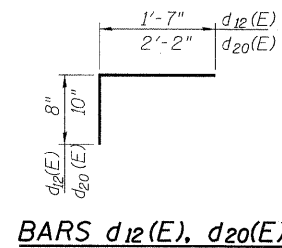
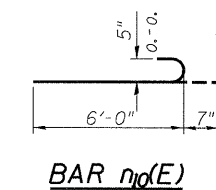


**BILL OF MATERIAL  
WEST ABUTMENT**

Bar	No.	Size	Length	Shape
d <sub>20</sub> (E)	38	#5	3'-0"	┌
d <sub>21</sub> (E)	76	#5	5'-0"	—
d <sub>22</sub> (E)	76	#4	2'-3"	└
h <sub>10</sub> (E)	2	#5	36'-4"	—
h <sub>11</sub> (E)	2	#5	13'-6"	—
h <sub>12</sub> (E)	4	#5	13'-5"	—
h <sub>13</sub> (E)	4	#5	8'-1"	—
h <sub>14</sub> (E)	6	#5	37'-5"	—
h <sub>15</sub> (E)	4	#5	46'-0"	—
h <sub>16</sub> (E)	16	#5	9'-0"	—
h <sub>17</sub> (E)	34	#6	11'-9"	—
h <sub>18</sub> (E)	4	#5	22'-9"	—
h <sub>19</sub> (E)	19	#5	6'-7"	└
s <sub>10</sub> (E)	9	#5	10'-8"	—
s <sub>11</sub> (E)	38	#5	7'-7"	—
s <sub>12</sub> (E)	2	#5	7'-11"	—
s <sub>13</sub> (E)	47	#5	4'-6"	—
s <sub>14</sub> (E)	24	#5	7'-6"	—
u <sub>10</sub> (E)	11	#5	5'-0"	—
u <sub>11</sub> (E)	6	#5	10'-11"	└
v <sub>12</sub> (E)	10	#5	10'-6"	—
v <sub>13</sub> (E)	10	#5	11'-8"	—
w <sub>10</sub> (E)	6	#5	9'-7"	—
Reinforcement Bars, Epoxy Coated		POUND	3,470	
Concrete Structures		CU YD	28.0	
Furnishing Steel Piles HP 14x73		FOOT	25	
Driving Piles		FOOT	25	
Structure Excavation		CU YD	144	

**BARS s<sub>10</sub>(E), s<sub>11</sub>(E), s<sub>12</sub>(E), s<sub>13</sub>(E), s<sub>14</sub>(E)**

Bar	A	B	C
s <sub>10</sub> (E)	3'-6"	3'-7"	3'-7"
s <sub>11</sub> (E)	3'-6"	3'-3"	10"
s <sub>12</sub> (E)	3'-9 1/2"	3'-3"	10"
s <sub>13</sub> (E)	6"	2'-0"	2'-0"
s <sub>14</sub> (E)	3'-6"	2'-0"	2'-0"



**FIELD CUTTING DIAGRAM**

Order v<sub>12</sub>(E) & v<sub>13</sub>(E) bars full length. Cut to fit as shown and use remainder of bars in other face.

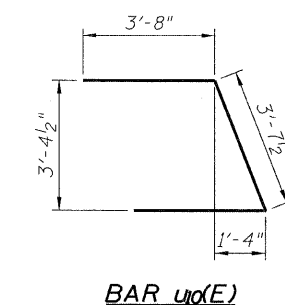
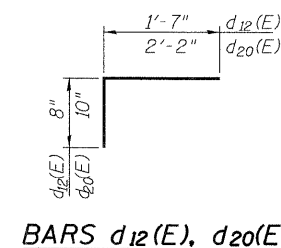
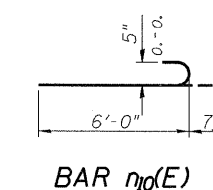
\* Epoxy Grout d<sub>20</sub>(E), d<sub>21</sub>(E), d<sub>12</sub>(E) bars in 9" minimum drilled holes, according to Article 584 of the Standard Specifications. The cost shall be included in "Reinforcement Bars, Epoxy Coated."

**BILL OF MATERIAL  
EAST ABUTMENT**

Bar	No.	Size	Length	Shape
d <sub>20</sub> (E)	38	#5	3'-0"	┌
d <sub>21</sub> (E)	76	#5	5'-0"	—
d <sub>22</sub> (E)	76	#4	2'-3"	└
h <sub>10</sub> (E)	2	#5	36'-4"	—
h <sub>11</sub> (E)	2	#5	13'-6"	—
h <sub>12</sub> (E)	4	#5	13'-5"	—
h <sub>13</sub> (E)	4	#5	8'-1"	—
h <sub>14</sub> (E)	6	#5	37'-5"	—
h <sub>15</sub> (E)	4	#5	46'-0"	—
h <sub>16</sub> (E)	16	#5	9'-0"	—
h <sub>17</sub> (E)	30	#6	11'-9"	—
h <sub>18</sub> (E)	4	#5	20'-1"	—
h <sub>19</sub> (E)	19	#5	6'-7"	└
s <sub>10</sub> (E)	9	#5	10'-8"	—
s <sub>11</sub> (E)	38	#5	7'-7"	—
s <sub>12</sub> (E)	2	#5	7'-11"	—
s <sub>13</sub> (E)	47	#5	4'-6"	—
s <sub>14</sub> (E)	21	#5	7'-6"	—
u <sub>10</sub> (E)	11	#5	5'-0"	—
u <sub>11</sub> (E)	6	#5	10'-11"	└
v <sub>16</sub> (E)	10	#5	11'-10"	—
v <sub>17</sub> (E)	10	#5	10'-10"	—
w <sub>10</sub> (E)	6	#5	9'-7"	—
Reinforcement Bars, Epoxy Coated		POUND	3,370	
Concrete Structures		CU YD	21.9	
Furnishing Steel Piles HP 14x73		FOOT	25	
Driving Piles		FOOT	25	
Structure Excavation		CU YD	152	

**BARS s<sub>10</sub>(E), s<sub>11</sub>(E), s<sub>12</sub>(E), s<sub>13</sub>(E), s<sub>14</sub>(E)**

Bar	A	B	C
s <sub>10</sub> (E)	3'-6"	3'-7"	3'-7"
s <sub>11</sub> (E)	3'-6"	3'-3"	10"
s <sub>12</sub> (E)	3'-9 1/2"	3'-3"	10"
s <sub>13</sub> (E)	6"	2'-0"	2'-0"
s <sub>14</sub> (E)	3'-6"	2'-0"	2'-0"



**FIELD CUTTING DIAGRAM**

Order v<sub>16</sub>(E) & v<sub>17</sub>(E) bars full length. Cut to fit as shown and use remainder of bars in other face.

\* Epoxy Grout d<sub>20</sub>(E), d<sub>21</sub>(E), d<sub>12</sub>(E) bars in 9" minimum drilled holes, according to Article 584 of the Standard Specifications. The cost shall be included in "Reinforcement Bars, Epoxy Coated."

F.A.I. RTE.	SECTION	COUNTY	TOTAL SHEETS	SHEET NO.
80	1006-5HBR-1.VBR(106-6)RS-3&1	BUREAU	24	07

CONTRACT NO. 66686  
ILLINOIS FED. AID PROJECT

**STATE OF ILLINOIS  
DEPARTMENT OF TRANSPORTATION**

**ABUTMENT DETAILS - EASTBOUND  
STRUCTURE NO. 006-0020 EB AND 006-0021 WB**

SHEET NO. 20 OF 37 SHEETS

FILE NAME =	USER NAME =	DESIGNED -	REVISED -
TYLIN INTERNATIONAL		DY	
PLOT SCALE =		PF	
PLOT DATE = 09/13/2011		DY	
		PF	