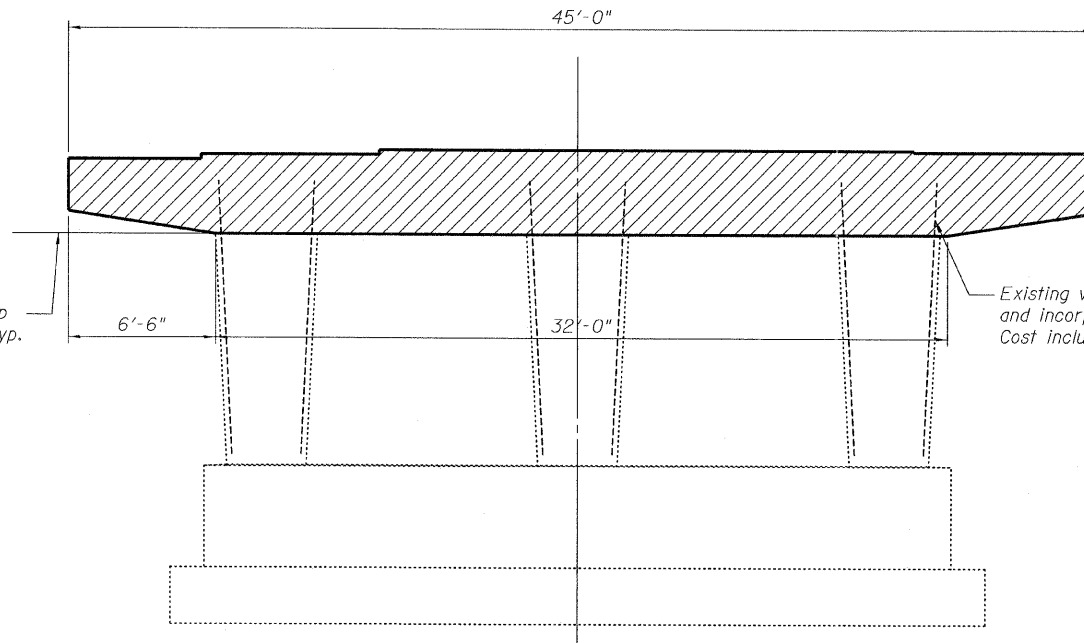
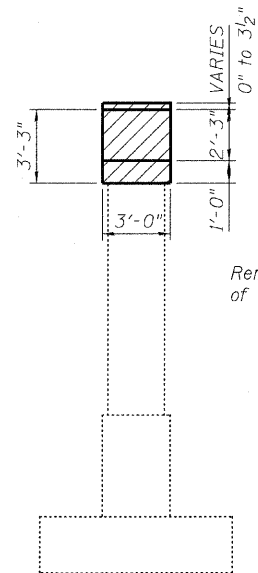


END VIEW

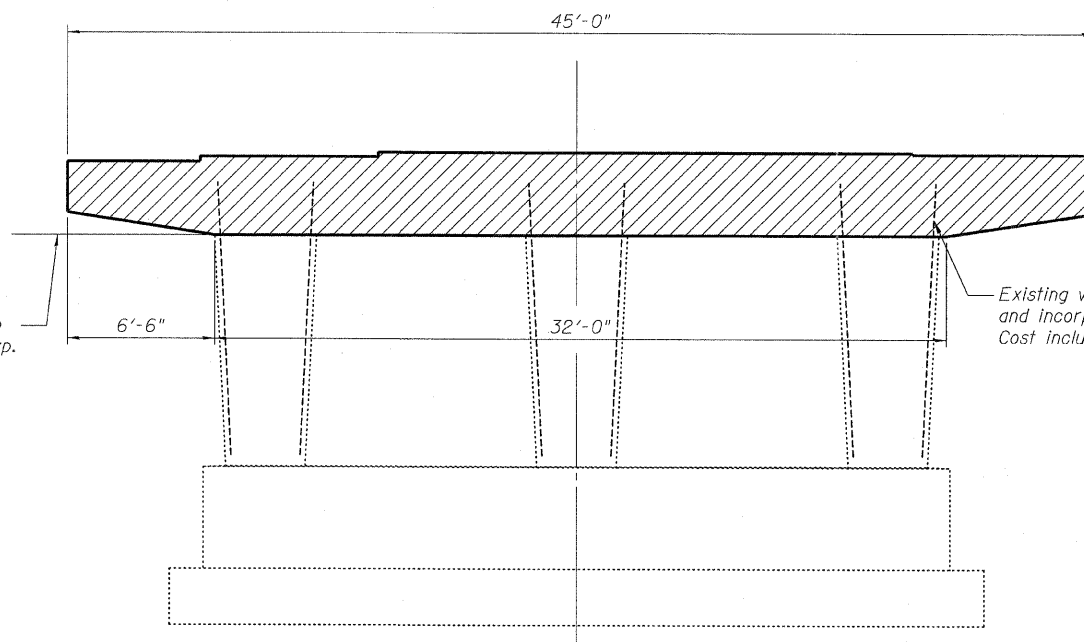


E.B. BRIDGE PIER CONCRETE REMOVAL

(Looking East, Piers 1 & 2)



END VIEW



W.B. BRIDGE PIER CONCRETE REMOVAL

(Looking East, Piers 1 & 2)

LEGEND

Concrete Removal

BILL OF MATERIAL - E.B.

ITEM	UNIT	PIER 1	PIER 2	TOTAL
Concrete Removal	Cu. Yd.	17.1	17.1	34.2

BILL OF MATERIAL - W.B.

ITEM	UNIT	PIER 1	PIER 2	TOTAL
Concrete Removal	Cu. Yd.	16.6	16.6	33.2

FILE NAME =	USER NAME =	DESIGNED - PF	REVISED -
TYLIN INTERNATIONAL		CHECKED - EH	REVISED -
PLOT SCALE =		DRAWN - EH	REVISED -
PLOT DATE = 09/13/2011		CHECKED - PF	REVISED -

**STATE OF ILLINOIS
DEPARTMENT OF TRANSPORTATION**

**CONCRETE REMOVAL - PIERS
STRUCTURE NO. 006-0020 EB AND 006-0021 WB**

F.A.I. RTE.	SECTION	COUNTY	TOTAL SHEETS	SHEET NO.
80	006-5HBR-1.VBR(06-6)RS-3&I	BUREAU	249	91
			CONTRACT NO. 66686	
ILLINOIS FED. AID PROJECT				

SHEET NO. 24 OF 37 SHEETS