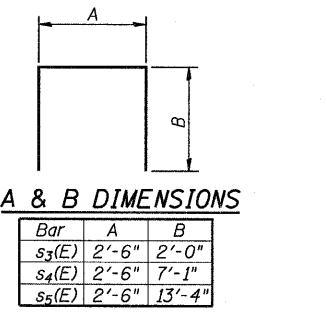
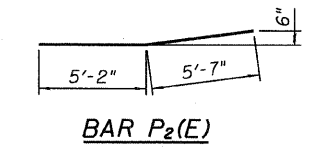
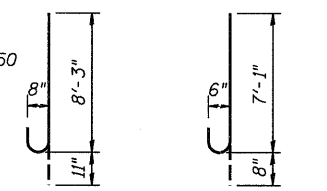
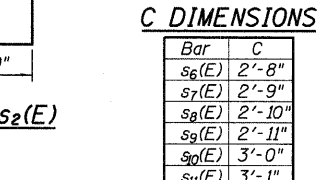
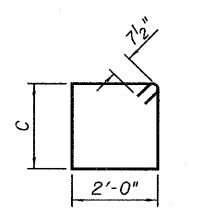
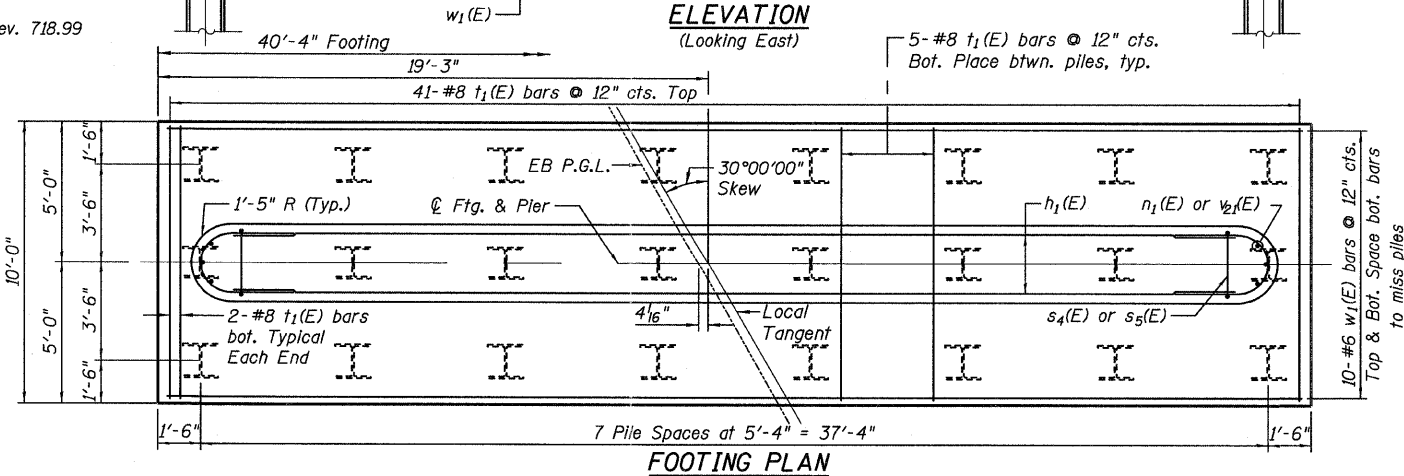
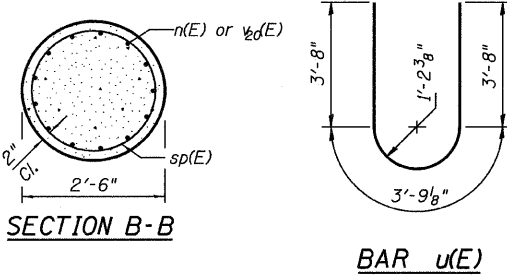
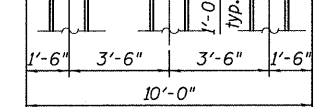
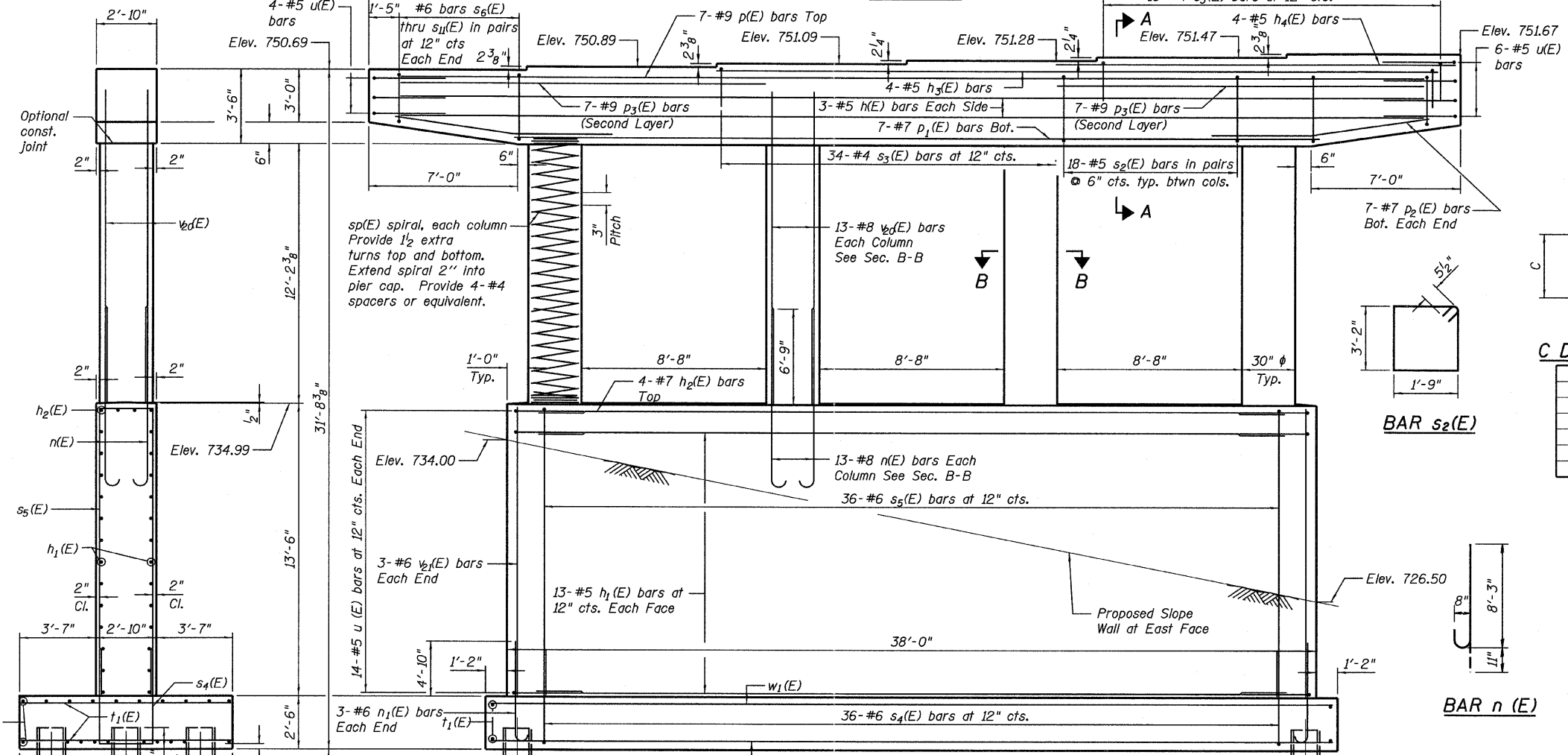
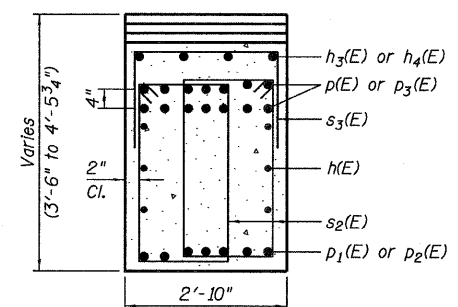
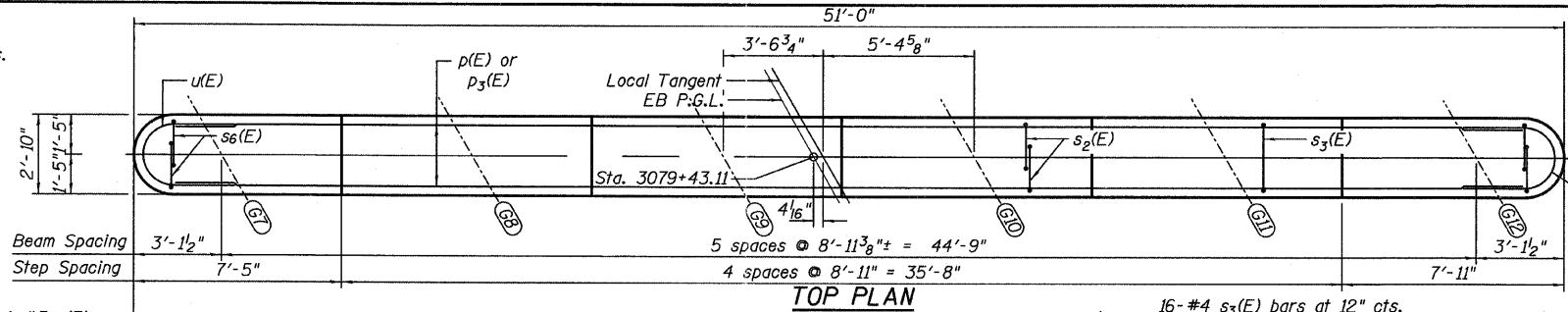


NOTES:

1. Space reinforcement in cap to miss anchor bolts.
2. Pour steps monolithically with cap.
3. For details of piles, see sheet 34 of 43.
4. For anchor bolt layout, see sheet 30 of 43.

PILE DATA

Type: Steel HP 14x73
 Nominal Required Bearing: 373 kips
 Allowable Resistance Available: 124 kips
 Est. Length: 50'-0"
 No. Production Piles: 23
 No. Test Piles: 1



BILL OF MATERIAL

Bar	No.	Size	Length	Shape
h(E)	6	#5	48'-2"	—
h1(E)	26	#5	35'-2"	—
h2(E)	4	#7	35'-2"	—
h3(E)	4	#5	33'-1"	—
h4(E)	4	#5	15'-2"	—
n(E)	52	#8	9'-2"	U
n1(E)	6	#6	7'-9"	U
p(E)	7	#9	48'-2"	—
p1(E)	7	#7	37'-0"	—
p2(E)	14	#7	10'-9"	—
p3(E)	14	#9	17'-3"	—
s2(E)	108	#5	10'-9"	□
s3(E)	50	#4	6'-6"	□
s4(E)	36	#6	16'-8"	□
s5(E)	36	#6	29'-2"	□
s6(E)	4	#6	9'-6"	□
s7(E)	4	#6	9'-8"	□
s8(E)	4	#6	9'-10"	□
s9(E)	4	#6	10'-0"	□
s10(E)	4	#6	10'-2"	□
s11(E)	4	#6	10'-4"	□
sp(E)	4	#4	12'-5"	W
t1(E)	80	#8	9'-8"	—
u(E)	38	#5	11'-2"	U
v2(E)	52	#8	15'-5"	—
v2(E)	6	#6	13'-2"	—
w1(E)	20	#6	40'-0"	—
Structure Excavation	CU YD		265	
Concrete Structures	CU YD		120.7	
Reinforcement Bars, Epoxy Coated	POUND		17,090	
Furnishing Steel Piles HP14x73	Foot		1150	
Driving Piles	Foot		1150	
Test Pile Steel HP14x73	Each		1	

**Length is height of spiral.

FILE NAME =	USER NAME =	DESIGNED - SP	REVISIONS -	STATE OF ILLINOIS DEPARTMENT OF TRANSPORTATION	PIER 1 - EASTBOUND STRUCTURE NO. 006-0176 EB AND 006-0177 WB	SHEET NO. 28 OF 43 SHEETS	F.A.I. RTE. 80	SECTION 106-SHBR-1-VBR(06-6)RS-3&I	COUNTY BUREAU	TOTAL SHEETS 219	SHEET NO. 132
TYLIN INTERNATIONAL	PLOT SCALE =	CHECKED - PF	REVISIONS -				CONTRACT NO. 66686				
	PLOT DATE = 09/13/2011	DRAWN - DY	REVISIONS -								
		CHECKED - PF	REVISIONS -								