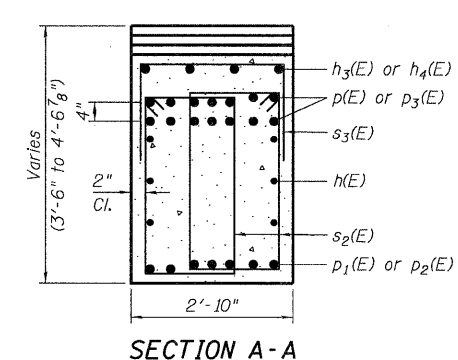
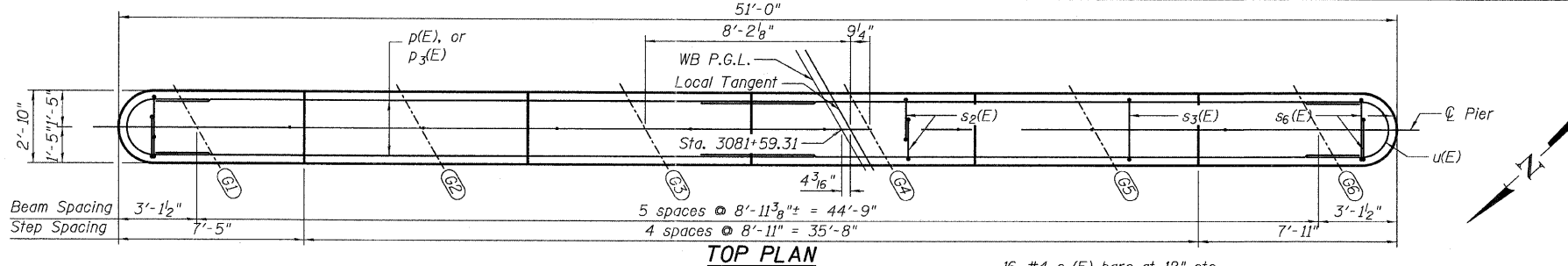


NOTES:

1. Space reinforcement in cap to miss anchor bolts.
2. Pour steps monolithically with cap.
3. For details of piles, see sheet 34 of 43.
4. For anchor bolt layout, see sheet 30 of 43.

PILE DATA

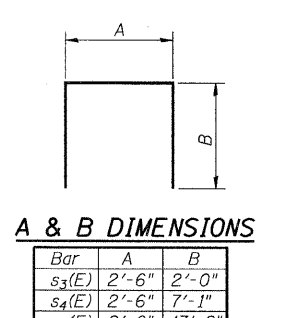
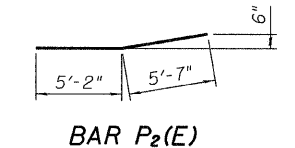
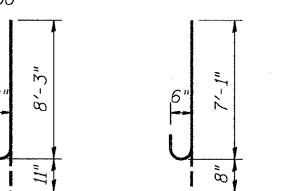
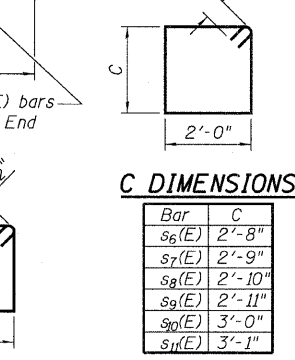
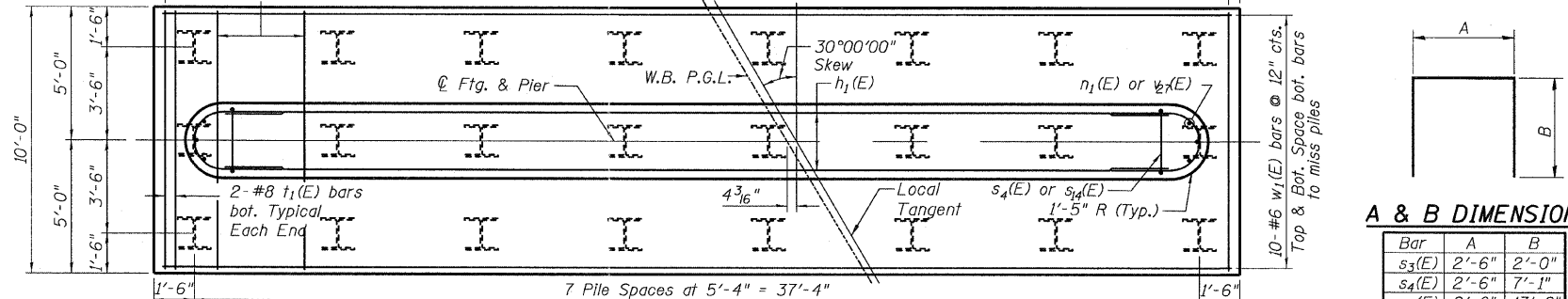
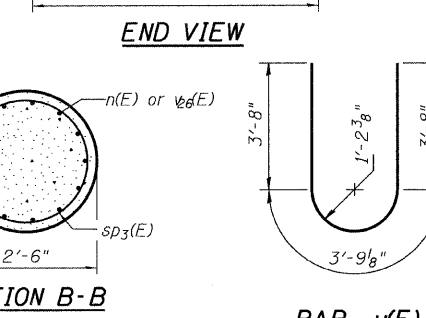
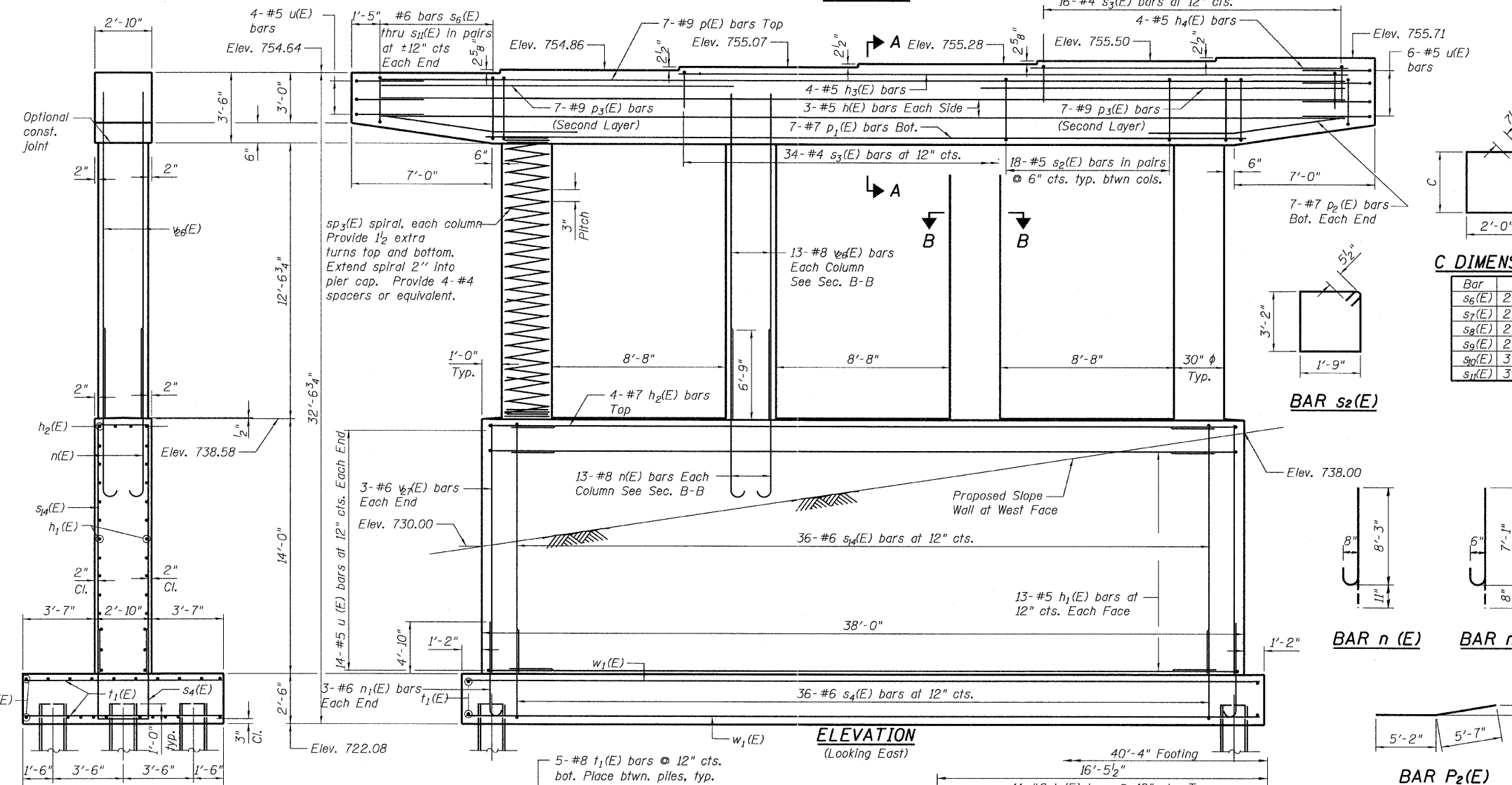
Type: Steel HP 14x73
 Nominal Required Bearing: 472 kips
 Allowable Resistance Available: 157 kips
 Est. Length: 52'-0"
 No. Production Piles: 23
 No. Test Piles: 1



BILL OF MATERIAL

Bar	No.	Size	Length	Shape
h(E)	6	#5	48'-2"	—
h1(E)	26	#5	35'-2"	—
h2(E)	4	#7	35'-2"	—
h3(E)	4	#5	33'-1"	—
h4(E)	4	#5	15'-2"	—
n(E)	52	#8	9'-2"	U
n1(E)	6	#6	7'-9"	U
p(E)	7	#9	48'-2"	—
p1(E)	7	#7	37'-0"	—
p2(E)	14	#7	10'-9"	—
p3(E)	14	#9	17'-3"	—
s2(E)	108	#5	10'-9"	□
s3(E)	50	#4	6'-6"	□
s4(E)	36	#6	16'-8"	□
s6(E)	4	#6	9'-6"	□
s7(E)	4	#6	9'-8"	□
s8(E)	4	#6	9'-10"	□
s9(E)	4	#6	10'-0"	□
s10(E)	4	#6	10'-2"	□
s11(E)	4	#6	10'-4"	□
s14(E)	36	#6	29'-10"	U
sp3(E)	4	#4	12'-9"	~
t1(E)	80	#8	9'-8"	—
u(E)	38	#5	11'-2"	U
v6(E)	52	#8	15'-11"	—
v7(E)	6	#6	13'-8"	—
w1(E)	20	#6	40'-0"	—
Structure Excavation	CU YD		285	
Concrete Structures	CU YD		123.2	
Reinforcement Bars, Epoxy Coated	POUND		17,220	
Furnishing Steel Piles HP14x73	Foot		1196	
Driving Piles	Foot		1196	
Test Pile Steel HP14x73	Each		1	

** Length is height of spiral.



FILE NAME =	USER NAME =	DESIGNED - SP	REVISD -	STATE OF ILLINOIS DEPARTMENT OF TRANSPORTATION	PIER 2 - WESTBOUND STRUCTURE NO. 006-0176 EB AND 006-0177 WB SHEET NO. 31 OF 43 SHEETS	F.A.I. RT.E.	SECTION	COUNTY	TOTAL SHEETS	SHEET NO.	
TYLIN INTERNATIONAL		CHECKED - PF	REVISD -			80	[06-SHBR-1-VBR]06-6]RS-3&1	BUREAU	249	135	
	PLOT SCALE =	DRAWN - DY	REVISD -			CONTRACT NO. 66686					
	PLOT DATE = 09/13/2011	CHECKED - PF	REVISD -			ILLINOIS FED. AID PROJECT					