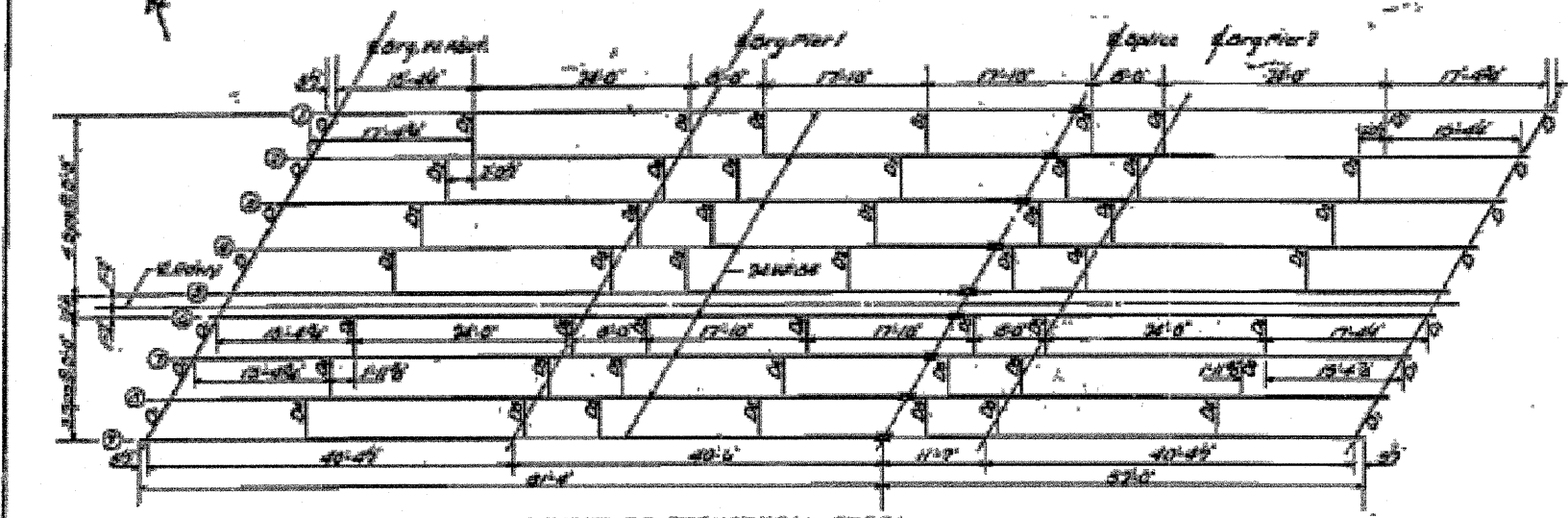


STATE OF ILLINOIS
DEPARTMENT OF PUBLIC WORKS & BUILDINGS
DIVISION OF HIGHWAYS

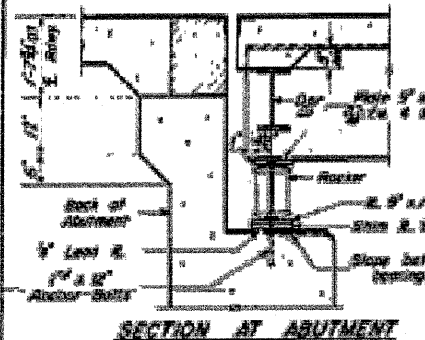
DESIGN	DATE	BY	NO.	NO. SHEETS
DESIGNED	9/16/2011	braboyco	1	10
DRAWN				
CHECKED				
DATE				



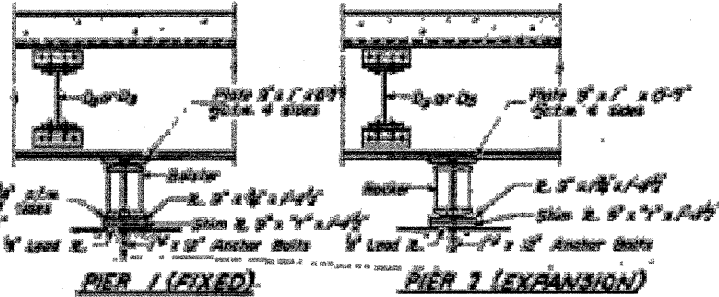
LAYOUT OF STRUCTURAL STEEL

ELEVATION TOP OF SLAB (NORTH BRIDGE)

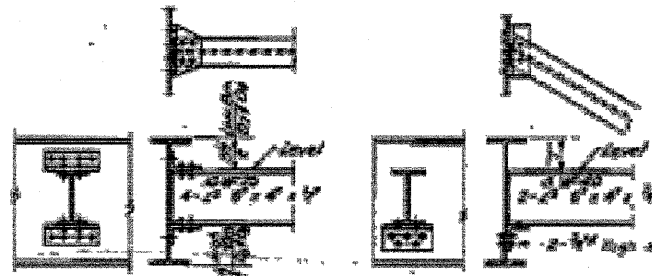
Distance from Elev. of Abut.	INVERT	1	2	3	4	5	6	7	8	9
0.00	779.00	779.77	779.76	779.90	779.90	779.97	779.08	779.30	779.60	779.60
10'-0"	779.77	779.77	780.00	780.00	780.00	780.00	780.00	780.00	780.00	780.00
20'-0"	780.00	780.00	780.00	780.00	780.00	780.00	780.00	780.00	780.00	780.00
30'-0"	780.00	780.00	780.00	780.00	780.00	780.00	780.00	780.00	780.00	780.00
40'-0"	780.00	780.00	780.00	780.00	780.00	780.00	780.00	780.00	780.00	780.00
50'-0"	780.00	780.00	780.00	780.00	780.00	780.00	780.00	780.00	780.00	780.00
60'-0"	780.00	780.00	780.00	780.00	780.00	780.00	780.00	780.00	780.00	780.00
70'-0"	780.00	780.00	780.00	780.00	780.00	780.00	780.00	780.00	780.00	780.00
80'-0"	780.00	780.00	780.00	780.00	780.00	780.00	780.00	780.00	780.00	780.00
90'-0"	780.00	780.00	780.00	780.00	780.00	780.00	780.00	780.00	780.00	780.00
100'-0"	780.00	780.00	780.00	780.00	780.00	780.00	780.00	780.00	780.00	780.00
110'-0"	780.00	780.00	780.00	780.00	780.00	780.00	780.00	780.00	780.00	780.00
120'-0"	780.00	780.00	780.00	780.00	780.00	780.00	780.00	780.00	780.00	780.00
130'-0"	780.00	780.00	780.00	780.00	780.00	780.00	780.00	780.00	780.00	780.00
140'-0"	780.00	780.00	780.00	780.00	780.00	780.00	780.00	780.00	780.00	780.00
150'-0"	780.00	780.00	780.00	780.00	780.00	780.00	780.00	780.00	780.00	780.00
160'-0"	780.00	780.00	780.00	780.00	780.00	780.00	780.00	780.00	780.00	780.00
170'-0"	780.00	780.00	780.00	780.00	780.00	780.00	780.00	780.00	780.00	780.00
180'-0"	780.00	780.00	780.00	780.00	780.00	780.00	780.00	780.00	780.00	780.00
190'-0"	780.00	780.00	780.00	780.00	780.00	780.00	780.00	780.00	780.00	780.00
200'-0"	780.00	780.00	780.00	780.00	780.00	780.00	780.00	780.00	780.00	780.00



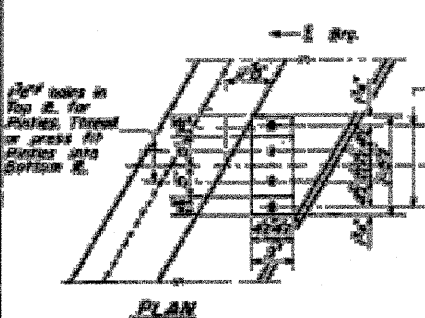
SECTION AT ABUTMENT



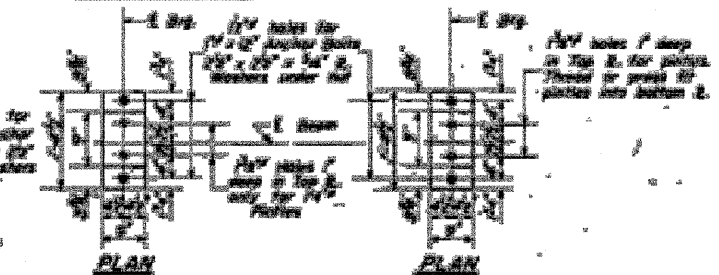
PIER 1 (FIXED) PIER 2 (EXPANSION)



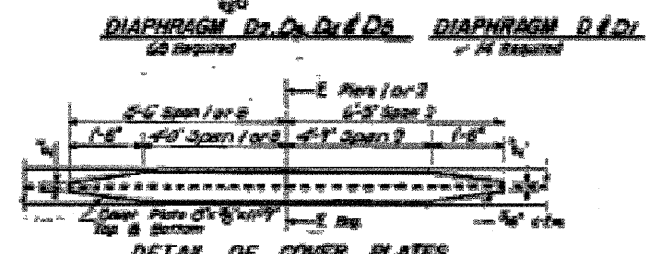
DIAPHRAGM D1, D2, D3, D4, D5, D6, D7, D8, D9



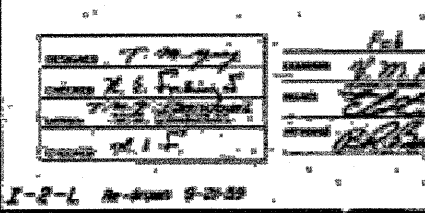
PLAN



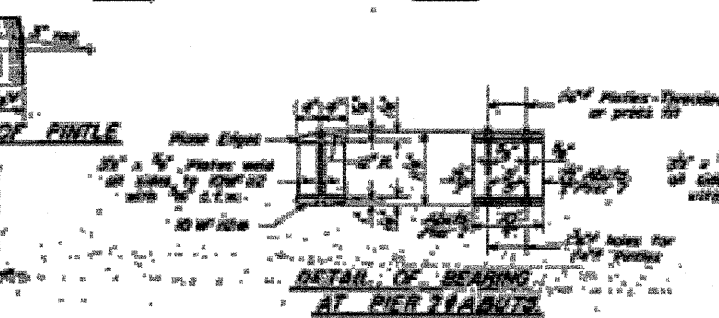
PLAN



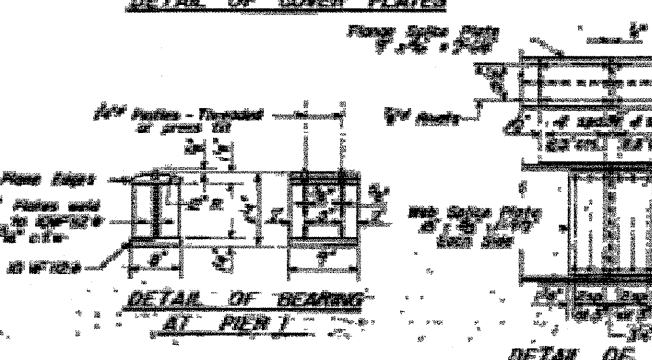
DETAIL OF COVER PLATES



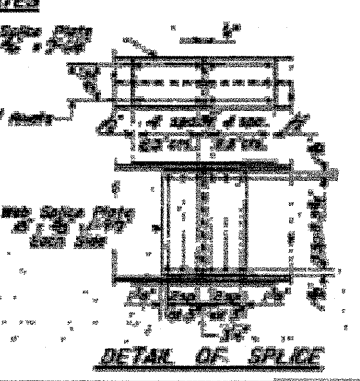
DETAIL OF FINITE



DETAIL OF BEARING AT PIER 1



DETAIL OF BEARING AT PIER 2



DETAIL OF SPLICE

T FOR DIAPHRAGMS D & D

SECTION	1	2	3	4	5	6	7	8	9
DIAPHRAGM D1	20'	20'	20'	20'	20'	20'	20'	20'	20'
DIAPHRAGM D2	20'	20'	20'	20'	20'	20'	20'	20'	20'
DIAPHRAGM D3	20'	20'	20'	20'	20'	20'	20'	20'	20'
DIAPHRAGM D4	20'	20'	20'	20'	20'	20'	20'	20'	20'
DIAPHRAGM D5	20'	20'	20'	20'	20'	20'	20'	20'	20'
DIAPHRAGM D6	20'	20'	20'	20'	20'	20'	20'	20'	20'
DIAPHRAGM D7	20'	20'	20'	20'	20'	20'	20'	20'	20'
DIAPHRAGM D8	20'	20'	20'	20'	20'	20'	20'	20'	20'
DIAPHRAGM D9	20'	20'	20'	20'	20'	20'	20'	20'	20'

ELEVATION TOP OF BEAMS (W)

SECTION	1	2	3	4	5	6	7	8	9
BEAM W1	780.00	780.00	780.00	780.00	780.00	780.00	780.00	780.00	780.00
BEAM W2	780.00	780.00	780.00	780.00	780.00	780.00	780.00	780.00	780.00
BEAM W3	780.00	780.00	780.00	780.00	780.00	780.00	780.00	780.00	780.00
BEAM W4	780.00	780.00	780.00	780.00	780.00	780.00	780.00	780.00	780.00
BEAM W5	780.00	780.00	780.00	780.00	780.00	780.00	780.00	780.00	780.00
BEAM W6	780.00	780.00	780.00	780.00	780.00	780.00	780.00	780.00	780.00
BEAM W7	780.00	780.00	780.00	780.00	780.00	780.00	780.00	780.00	780.00
BEAM W8	780.00	780.00	780.00	780.00	780.00	780.00	780.00	780.00	780.00
BEAM W9	780.00	780.00	780.00	780.00	780.00	780.00	780.00	780.00	780.00

TABLE OF Y DIMENSIONS

LOCATION	1	2	3	4	5	6	7	8	9
Y1	0	0	0	0	0	0	0	0	0
Y2	0	0	0	0	0	0	0	0	0
Y3	0	0	0	0	0	0	0	0	0
Y4	0	0	0	0	0	0	0	0	0
Y5	0	0	0	0	0	0	0	0	0
Y6	0	0	0	0	0	0	0	0	0
Y7	0	0	0	0	0	0	0	0	0
Y8	0	0	0	0	0	0	0	0	0
Y9	0	0	0	0	0	0	0	0	0

STRUCTURAL STEEL
(NORTH BRIDGE)
R.A. I.R. 60 SEC. 05-348-1
BUREAU COUNTY
STA. 129+90.87

FOR INFORMATION ONLY