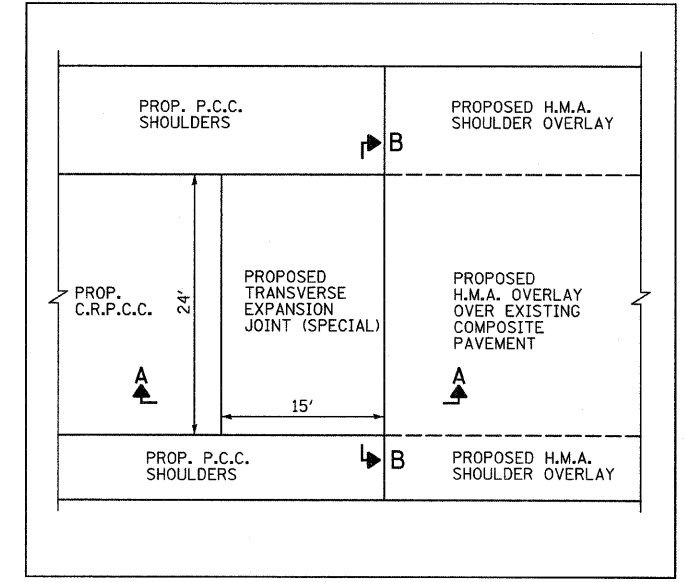
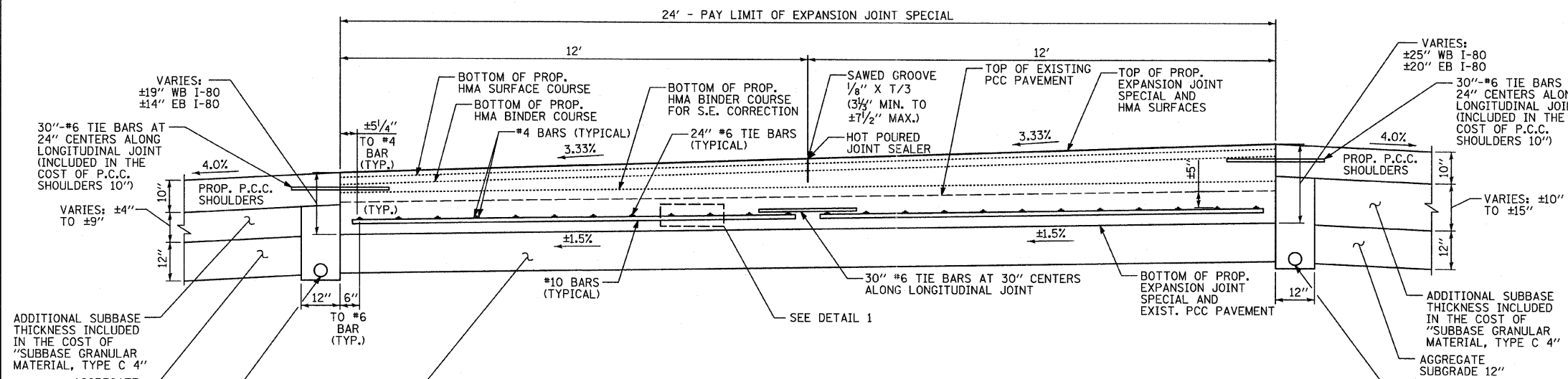


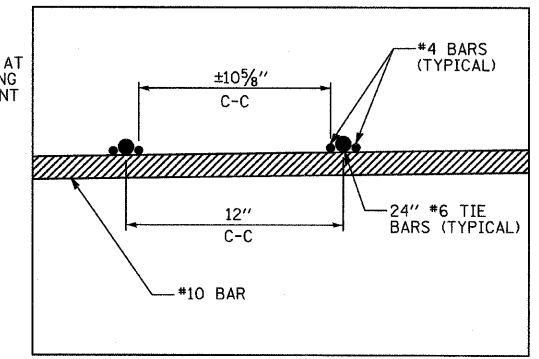
**A-A: CROSS SECTION OF EXPANSION JOINT SPECIAL AT EAST RECONSTRUCTION LIMIT**



**TYPICAL PLAN VIEW OF EXPANSION JOINT SPECIAL (NOT TO SCALE)**



**B-B: ELEVATION VIEW OF JOINT**



**DETAIL 1: BAR SPACING DETAILS**

**NOTE:**  
ALL BARS SHALL BE EPOXY COATED.

<b>TYLIN INTERNATIONAL</b> USER NAME = PLOT SCALE = PLOT DATE =	DESIGNED - CAC DRAWN - CAC CHECKED - JDF DATE - 9/7/2011	REVISED - REVISED - REVISED - REVISED -	<b>STATE OF ILLINOIS</b> <b>DEPARTMENT OF TRANSPORTATION</b>	<b>F.A.I. ROUTE 80 (I-80)</b> <b>EXPANSION JOINT SPECIAL DETAILS</b>	SECTION COUNTY BUREAU CONTRACT NO. 66686	TOTAL SHEETS SHEET NO. 249/176
	SCALE: NONE SHEET NO. 2 OF 2 SHEETS STA. TO STA.	FED. ROAD DIST. NO. ILLINOIS FED. AID PROJECT				
	F.A.I. RTE. SECTION COUNTY TOTAL SHEETS SHEET NO.					
	80 (I06-5)HBR-1.VBR(06-6)RS-3&I BUREAU 249/176 CONTRACT NO. 66686					