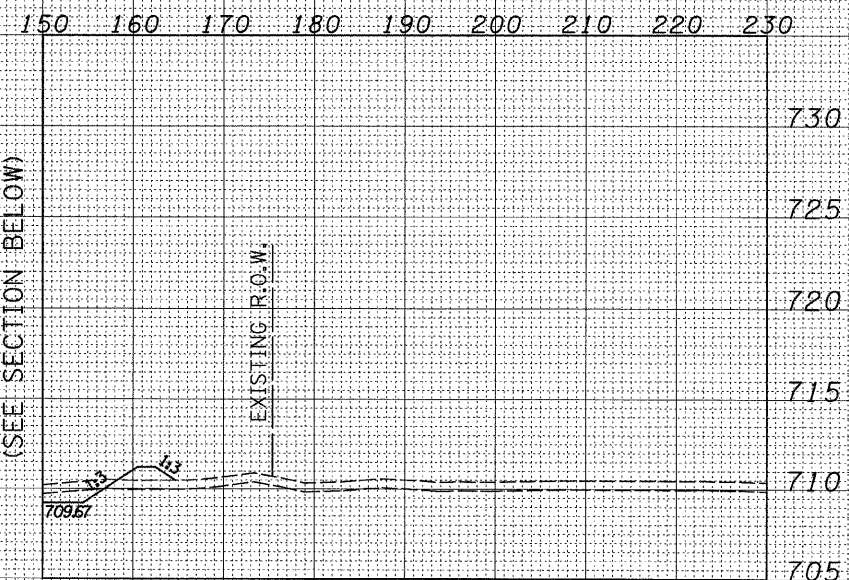
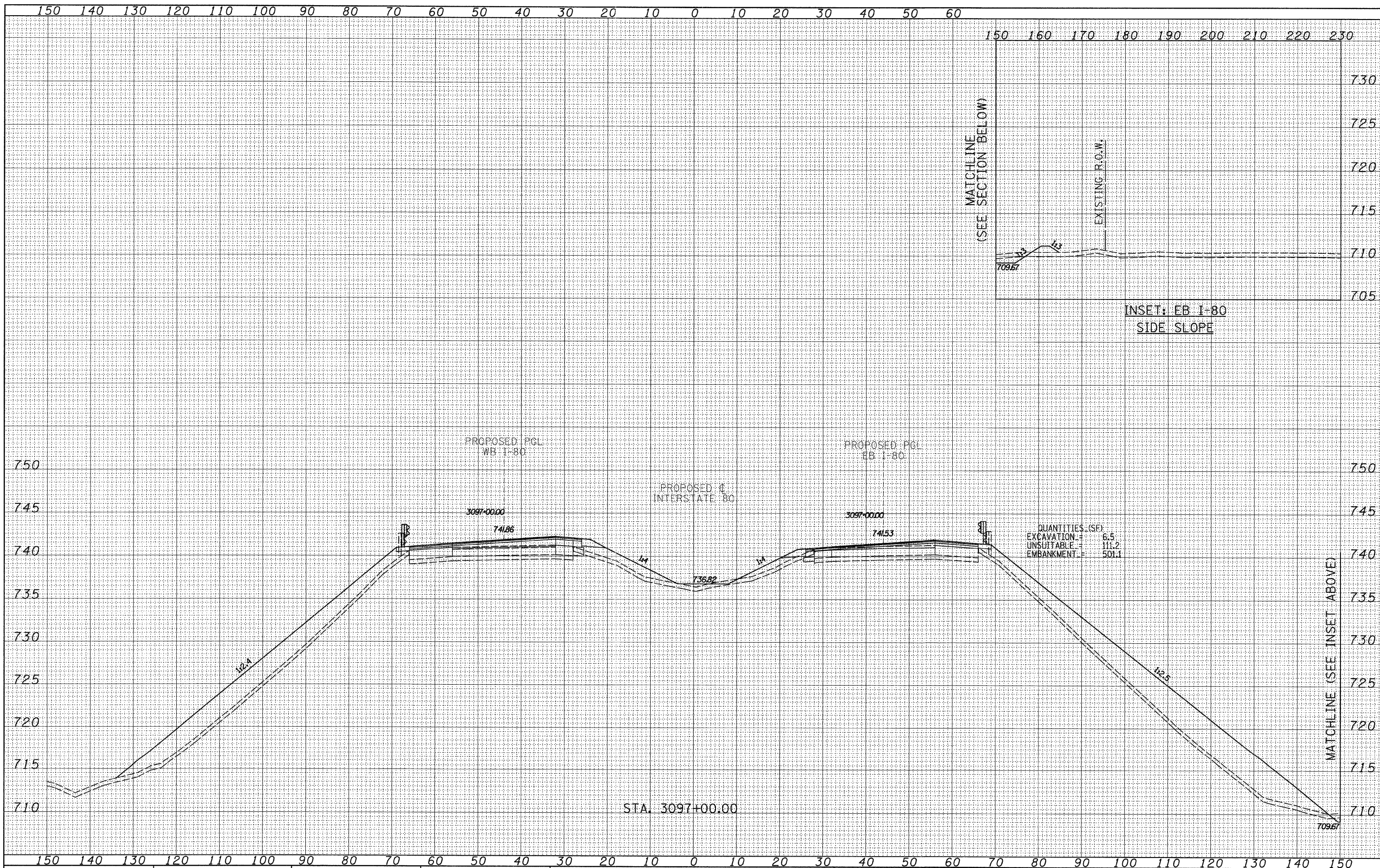


FINAL SURVEY	DATE
DESIGNED	BY
DRAWN	
CHECKED	
DATE	
REVISIONS	
NO.	

ORIGINAL SURVEY	DATE
DESIGNED	BY
DRAWN	
CHECKED	
DATE	
REVISIONS	
NO.	



QUANTITIES (SF)

EXCAVATION	6.5
UNSUITABLE	111.2
EMBANKMENT	501.1

TYLIN INTERNATIONAL

USER NAME =	DESIGNED - JDF	REVISED -
PLLOT SCALE =	DRAWN - JDF	REVISED -
PLLOT DATE =	CHECKED - JPM	REVISED -
	DATE - 9/7/2011	REVISED -

**STATE OF ILLINOIS
DEPARTMENT OF TRANSPORTATION**

**F.A.I. ROUTE 80 (I-80)
PROPOSED CROSS SECTIONS**

SCALE: 1" = 10' H
SHEET NO. OF SHEETS STA. 3097+00.00 TO STA. 3097+00.00

F.A.I. RTE.	SECTION	COUNTY	TOTAL SHEETS	SHEET NO.
80	[06-5]HBR-1,VBR(06-6)RS-3&I	BUREAU	299	187
FED. ROAD DIST. NO. ILLINOIS FED. AID PROJECT			CONTRACT NO. 66686	

P:\602429\1(1-80)\Road\602429.10_A\0366686-sht-xsht.dgn