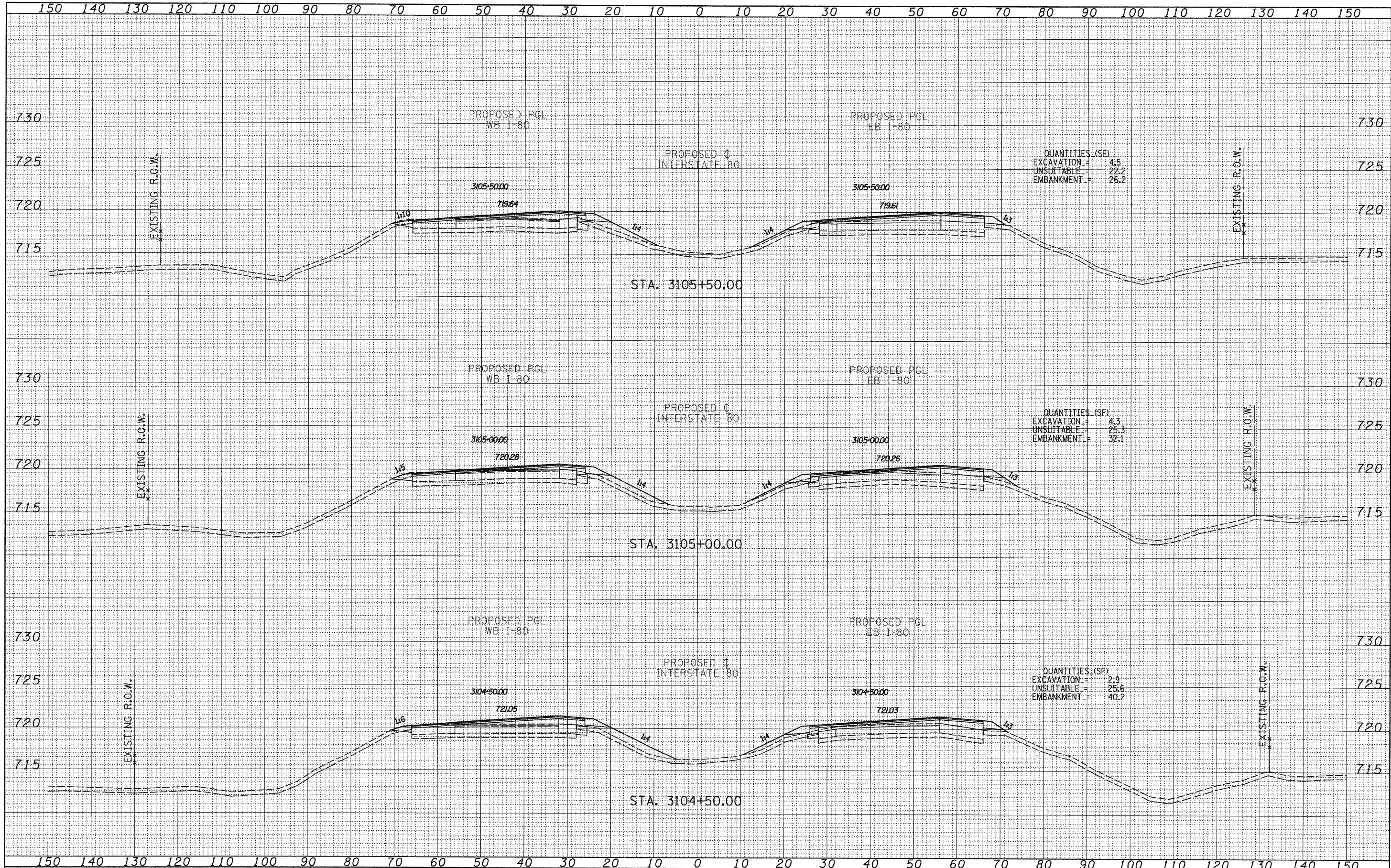


DATE	
BY	
SURVEYED	
TEMPLATE	
AREAS CHECKED	
NO.	
FINAL SURVEY	
NOTE BOOK	
AREAS CHECKED	
NO.	

DATE	
BY	
SURVEYED	
TEMPLATE	
AREAS CHECKED	
NO.	
ORIGINAL SURVEY	
NOTE BOOK	
AREAS CHECKED	
NO.	



QUANTITIES (SF)
 EXCAVATION = 4.5
 UNSUITABLE = 22.2
 EMBANKMENT = 26.2

QUANTITIES (SF)
 EXCAVATION = 4.3
 UNSUITABLE = 25.3
 EMBANKMENT = 32.1

QUANTITIES (SF)
 EXCAVATION = 2.9
 UNSUITABLE = 25.6
 EMBANKMENT = 40.2

TYLIN INTERNATIONAL

USER NAME =
 PLOT SCALE =
 PLOT DATE =

DESIGNED - JDF
 DRAWN - JDF
 CHECKED - JPM
 DATE - 9/7/2011

REVISED -
 REVISED -
 REVISED -
 REVISED -

STATE OF ILLINOIS
 DEPARTMENT OF TRANSPORTATION

F.A.I. ROUTE 80 (I-80)
 PROPOSED CROSS SECTIONS

SCALE: 1" = 10' H
 SHEET NO. OF SHEETS STA. 3104+50.00 TO STA. 3105+50.00

F.A.I. RTE.	SECTION	COUNTY	TOTAL SHEETS NO.
80	[(06-5)HBR-1,VBR](06-6)IRS-3&I	BUREAU	249/193
FED. ROAD DIST. NO.	ILLINOIS FED. AID PROJECT	CONTRACT NO.	66686

P:\602429.1(1-80)\Road\602429.10_A\0366686-sht-xsht.dgn