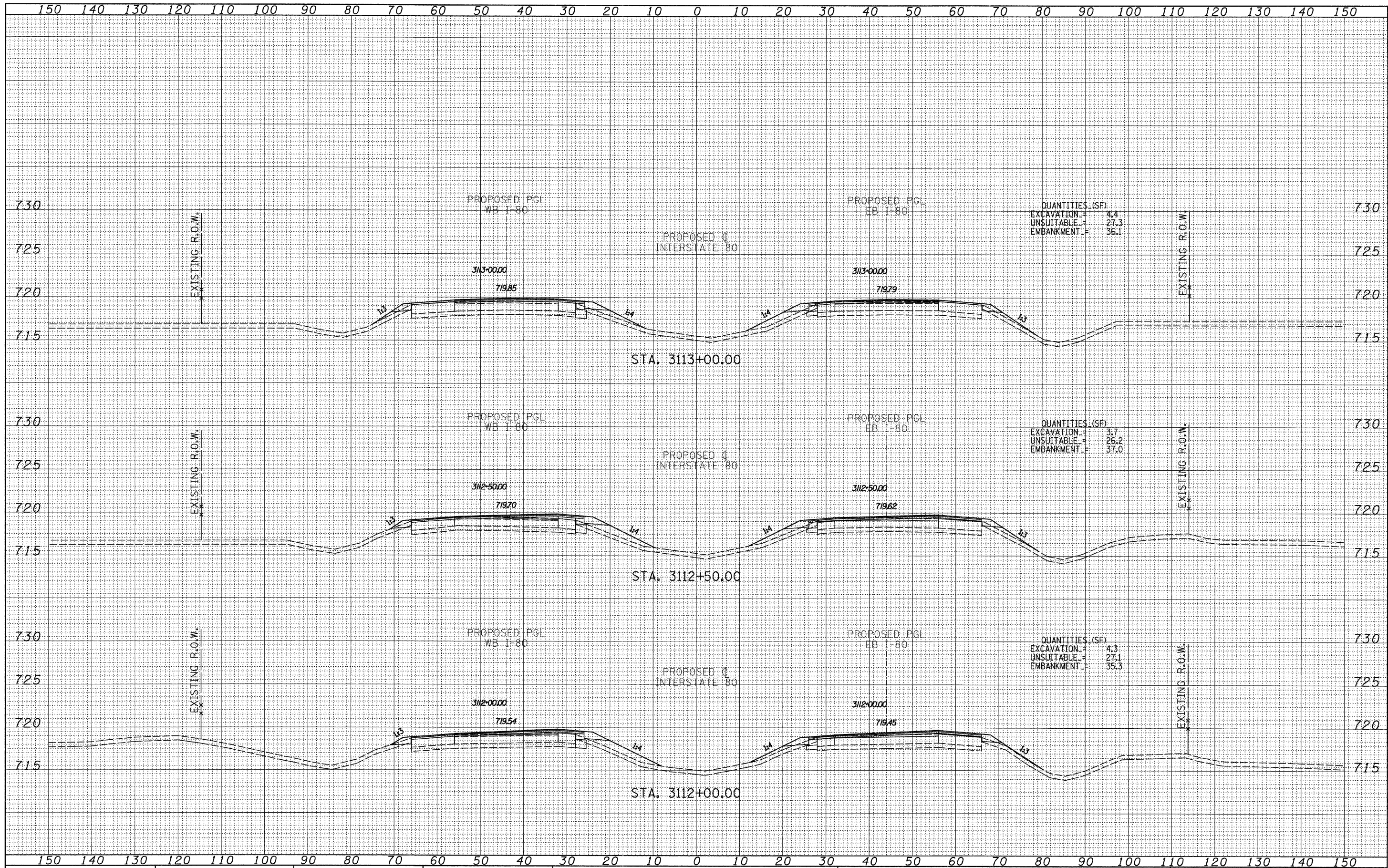


DATE	BY
SURVEYED	BY
NOTE BOOK	NO.
TEMPLATE	NO.
AREAS CHECKED	
AREAS CHECKED	

DATE	BY
SURVEYED	BY
NOTE BOOK	NO.
TEMPLATE	NO.
AREAS CHECKED	
AREAS CHECKED	



TYLIN INTERNATIONAL

USER NAME	DESIGNED - JDF	REVISED -
PLOT SCALE	DRAWN - JDF	REVISED -
PLOT DATE	CHECKED - JPM	REVISED -
	DATE - 9/7/2011	REVISED -

STATE OF ILLINOIS  
DEPARTMENT OF TRANSPORTATION

F.A.I. ROUTE 80 (I-80)  
PROPOSED CROSS SECTIONS

SCALE: 1" = 10' H  
SHEET NO. OF SHEETS STA. 3112+00.00 TO STA. 3113+00.00

F.A.I. RTE.	SECTION	COUNTY	TOTAL SHEETS	SHEET NO.
80	[106-5]HBR-1.VBR(06-6)JRS-3&I	BUREAU	249	200
FED. ROAD DIST. NO.		ILLINOIS FED. AID PROJECT		CONTRACT NO. 66686

P:\602429.1(I-80)\Road\602429.10\_A\36686-shr-xssht.dgn