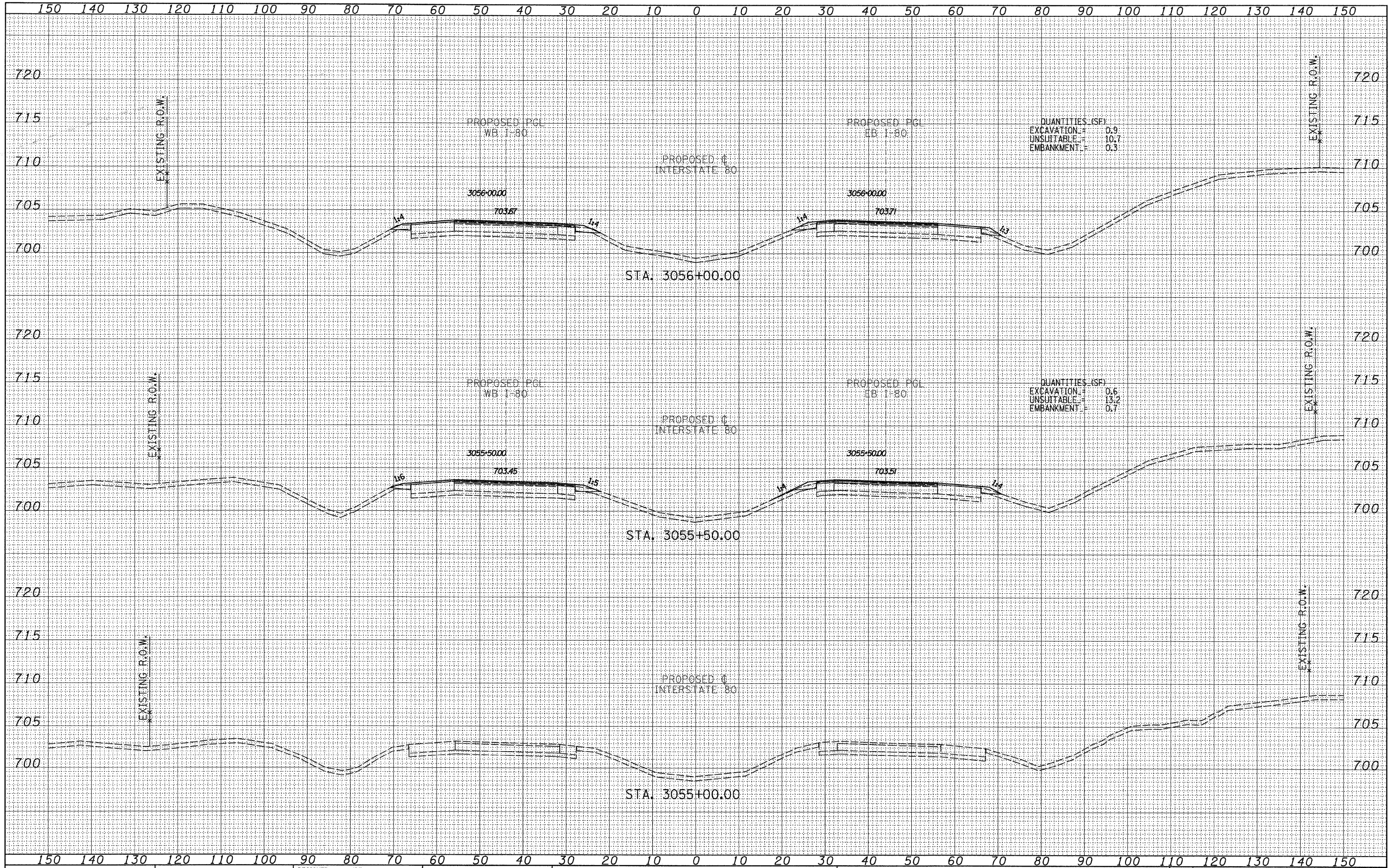


FINAL SURVEY	DATE
SURVEYED	BY
PLOTTED	
TEMPLATE	
NOTE BOOK	
NO.	
AREAS CHECKED	

ORIGINAL SURVEY	DATE
SURVEYED	BY
PLOTTED	
TEMPLATE	
NOTE BOOK	
NO.	
AREAS CHECKED	



TYLINT INTERNATIONAL USER NAME = DESIGNED - JDF DRAWN - JDF CHECKED - JPM DATE - 9/7/2011	DESIGNED - JDF DRAWN - JDF CHECKED - JPM DATE - 9/7/2011	REVISED - REVISED - REVISED - REVISED -	STATE OF ILLINOIS DEPARTMENT OF TRANSPORTATION		F.A.I. ROUTE 80 (I-80) PROPOSED CROSS SECTIONS		F.A.I. RTE.	SECTION	COUNTY	TOTAL SHEETS	SHEET NO.
					80	[(106-5)HBR-1, VBR(106-6)RS-3&I	BUREAU	249	203	CONTRACT NO. 66686	
SCALE: 1" = 10' V ^h SHEET NO. OF SHEETS STA. 3055+00.00 TO STA. 3056+00.00							FED. ROAD DIST. NO. [ILLINOIS] FED. AID PROJECT				

P:\602429.1(I-80)\Road\602429.10_A\366686-sh-t-xssht.dgn