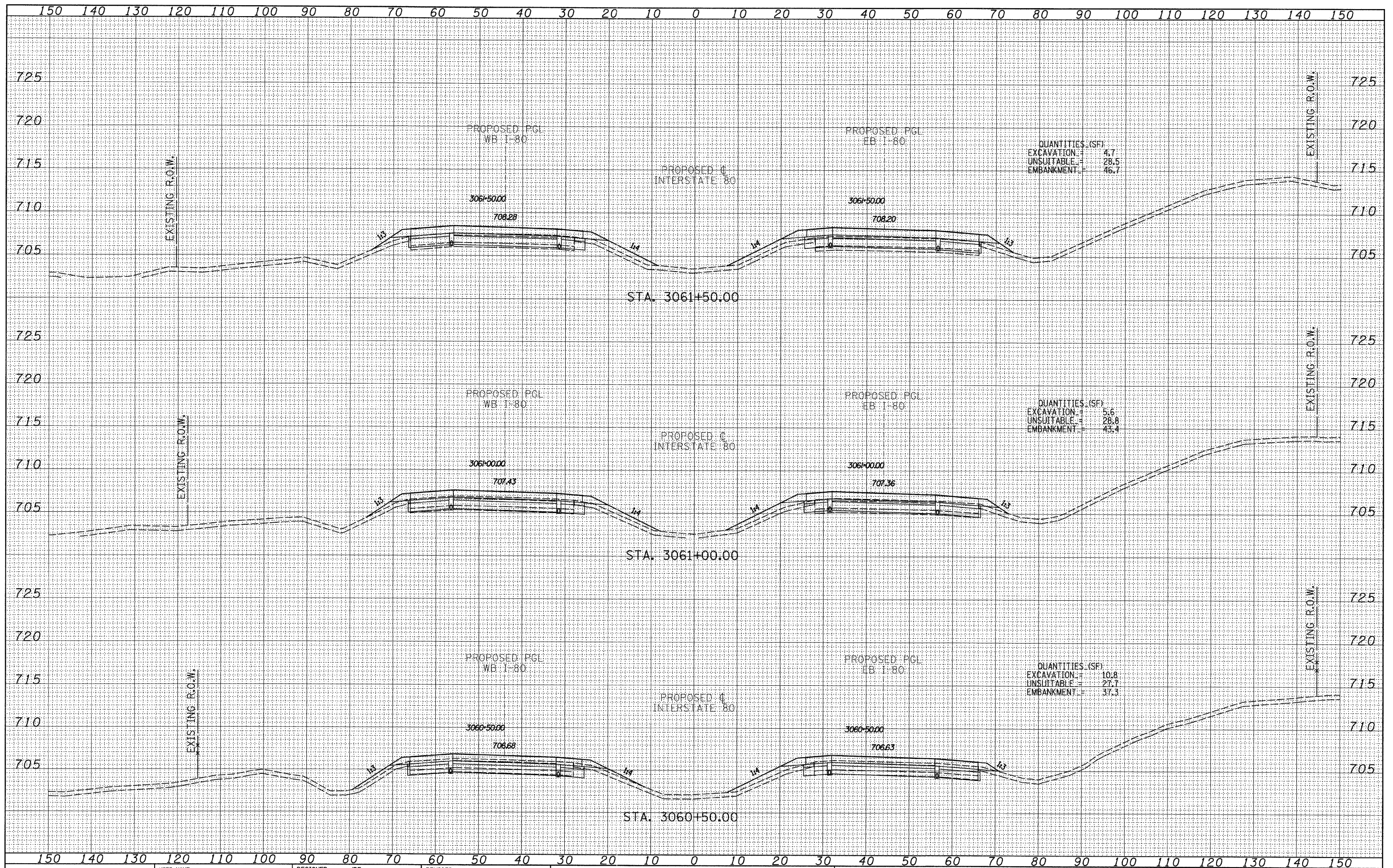


DATE	
BY	
FINAL SURVEY	SURVEYED
NOTE BOOK	PLOTTED
NO.	TEMPLATE
	AREAS CHECKED

DATE	
BY	
ORIGINAL SURVEY	SURVEYED
NOTE BOOK	PLOTTED
NO.	TEMPLATE
	AREAS CHECKED



TYLIN INTERNATIONAL USER NAME = DESIGNED - JDF DRAWN - JDF CHECKED - JPM DATE - 9/7/2011	DESIGNED - JDF DRAWN - JDF CHECKED - JPM DATE - 9/7/2011	REVISED - REVISED - REVISED - REVISED -	STATE OF ILLINOIS DEPARTMENT OF TRANSPORTATION F.A.I. ROUTE 80 (I-80) PROPOSED CROSS SECTIONS SCALE: 1" = 10' H SHEET NO. OF SHEETS STA. 3060+50.00 TO STA. 3061+50.00	F.A.I. SECTION COUNTY TOTAL SHEETS SHEET NO. 80 [106-5HBR-1.VBR]106-61]RS-3&I BUREAU 241 208 CONTRACT NO. 66686
	PLOT SCALE = PLOT DATE =	REVISED - REVISED - REVISED -		FED. ROAD DIST. NO. [ILLINOIS] FED. AID PROJECT

P:\602429.1(I-80)\Road\602429.10_A\0366686-sht-xssht.dgn