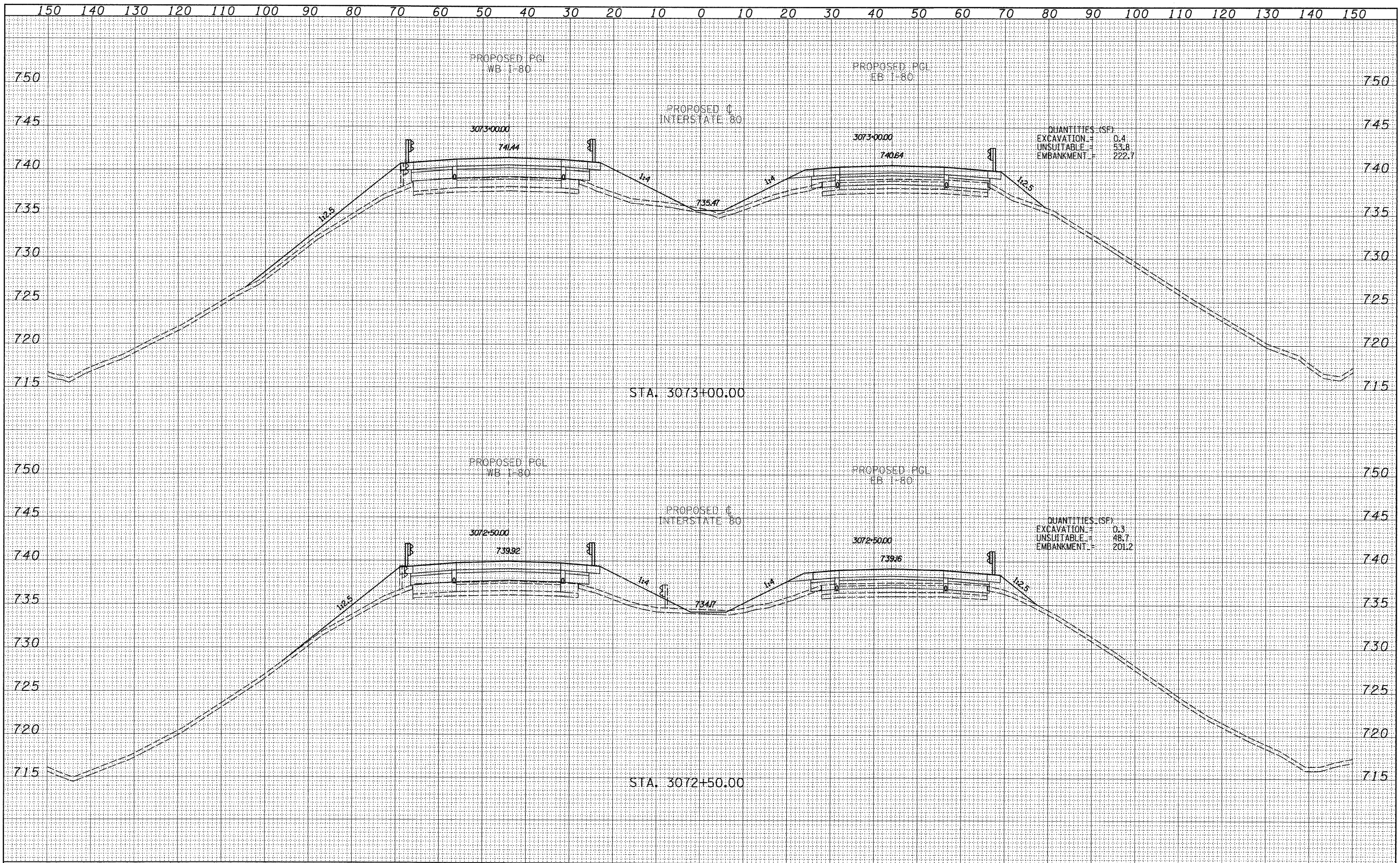


FINAL SURVEY	SURVEYED	DATE
NOTE BOOK	PLOTTED	BY
NO.	TEMPLATE	
	AREAS	
	CHECKED	

ORIGINAL SURVEY	SURVEYED	DATE
NOTE BOOK	PLOTTED	BY
NO.	TEMPLATE	
	AREAS	
	CHECKED	



TYLIN INTERNATIONAL	USER NAME =	DESIGNED - JDF	REVISED -
	PLOT SCALE =	DRAWN - JDF	REVISED -
	PLOT DATE =	CHECKED - JPM	REVISED -
		DATE - 9/7/2011	REVISED -

DESIGNED - JDF	REVISED -
DRAWN - JDF	REVISED -
CHECKED - JPM	REVISED -
DATE - 9/7/2011	REVISED -

STATE OF ILLINOIS
DEPARTMENT OF TRANSPORTATION

F.A.I. ROUTE 80 (I-80)
PROPOSED CROSS SECTIONS

SCALE: 1" = 10' H

SHEET NO. OF SHEETS STA. 3072+50.00 TO STA. 3073+00.00

F.A.I. RTE.	SECTION	COUNTY	TOTAL SHEETS	SHEET NO.
80	106-5HBR-1.VBR\06-61\RS-3&I		249	211
FED. ROAD DIST. NO. [ILLINOIS] FED. AID PROJECT				CONTRACT NO. 66686