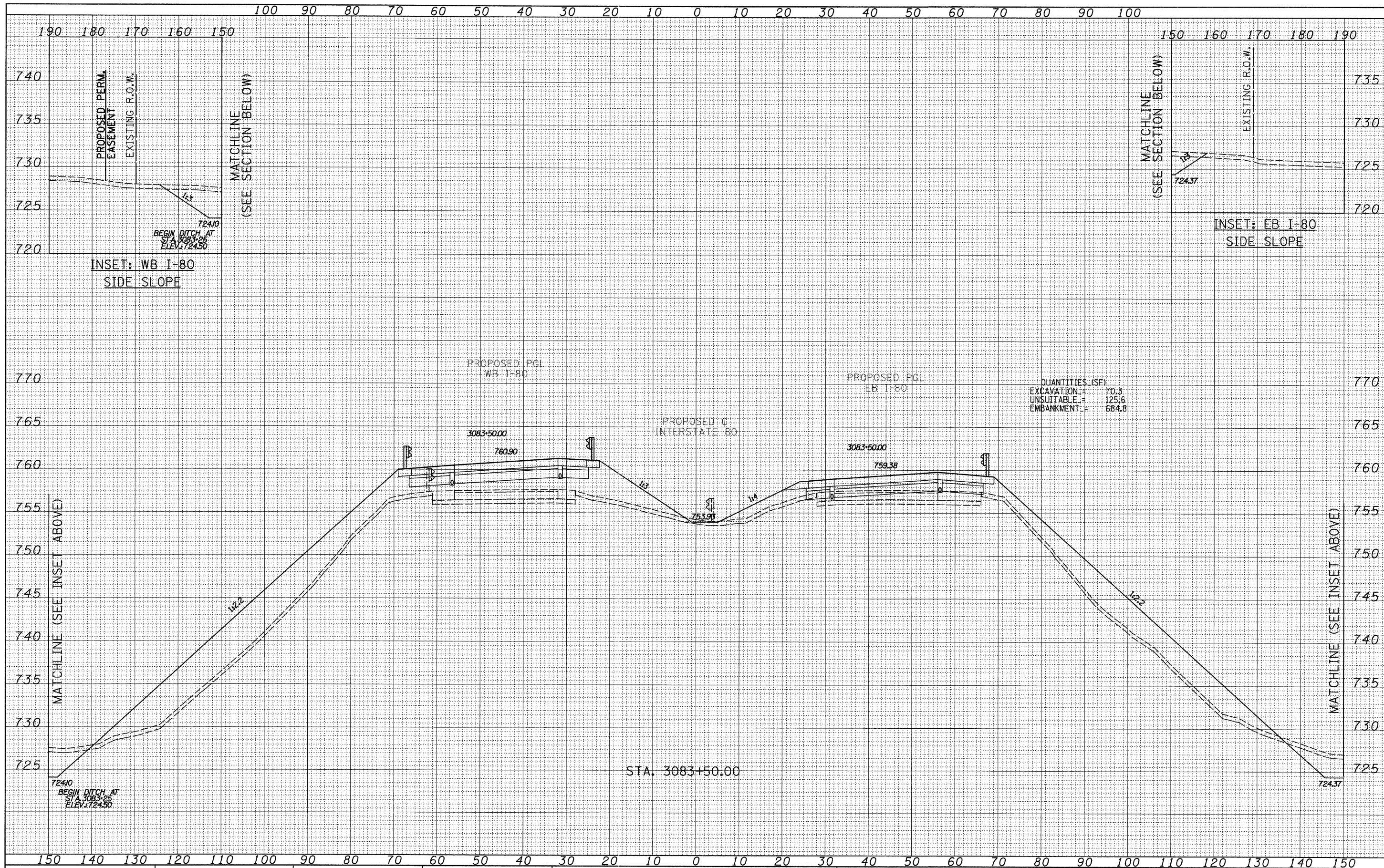


FINAL SURVEY	SURVEYED	BY	DATE
NOTE BOOK	PLOTTED		
NO.	TEMPLATE		
	AREAS CHECKED		

ORIGINAL SURVEY	SURVEYED	BY	DATE
NOTE BOOK	PLOTTED		
NO.	TEMPLATE		
	AREAS CHECKED		



QUANTITIES (SF)

EXCAVATION	=	70.3
UNSUITABLE	=	125.6
EMBANKMENT	=	684.8

TYLIN INTERNATIONAL

USER NAME =	DESIGNED - JDF	REVISED -
DESIGNED - JDF	DRAWN - JDF	REVISED -
DRAWN - JDF	CHECKED - JPM	REVISED -
CHECKED - JPM	DATE - 9/7/2011	REVISED -

**STATE OF ILLINOIS
DEPARTMENT OF TRANSPORTATION**

**F.A.I. ROUTE 80 (I-80)
PROPOSED CROSS SECTIONS**

SCALE: 1" = 10' V, 1" = 40' H

SHEET NO. OF SHEETS STA. 3083+50.00 TO STA. 3083+50.00

F.A.I. RTE.	SECTION	COUNTY	TOTAL SHEETS	SHEET NO.
80	(106-5)HBR-1, VBR(106-6)RS-3&I	BUREAU	249	228
FED. ROAD DIST. NO. (ILLINOIS) FED. AID PROJECT			CONTRACT NO. 66686	

P:\602429.1(I-80)\Road\602429.10_A\366686-sht-xsht.dgn