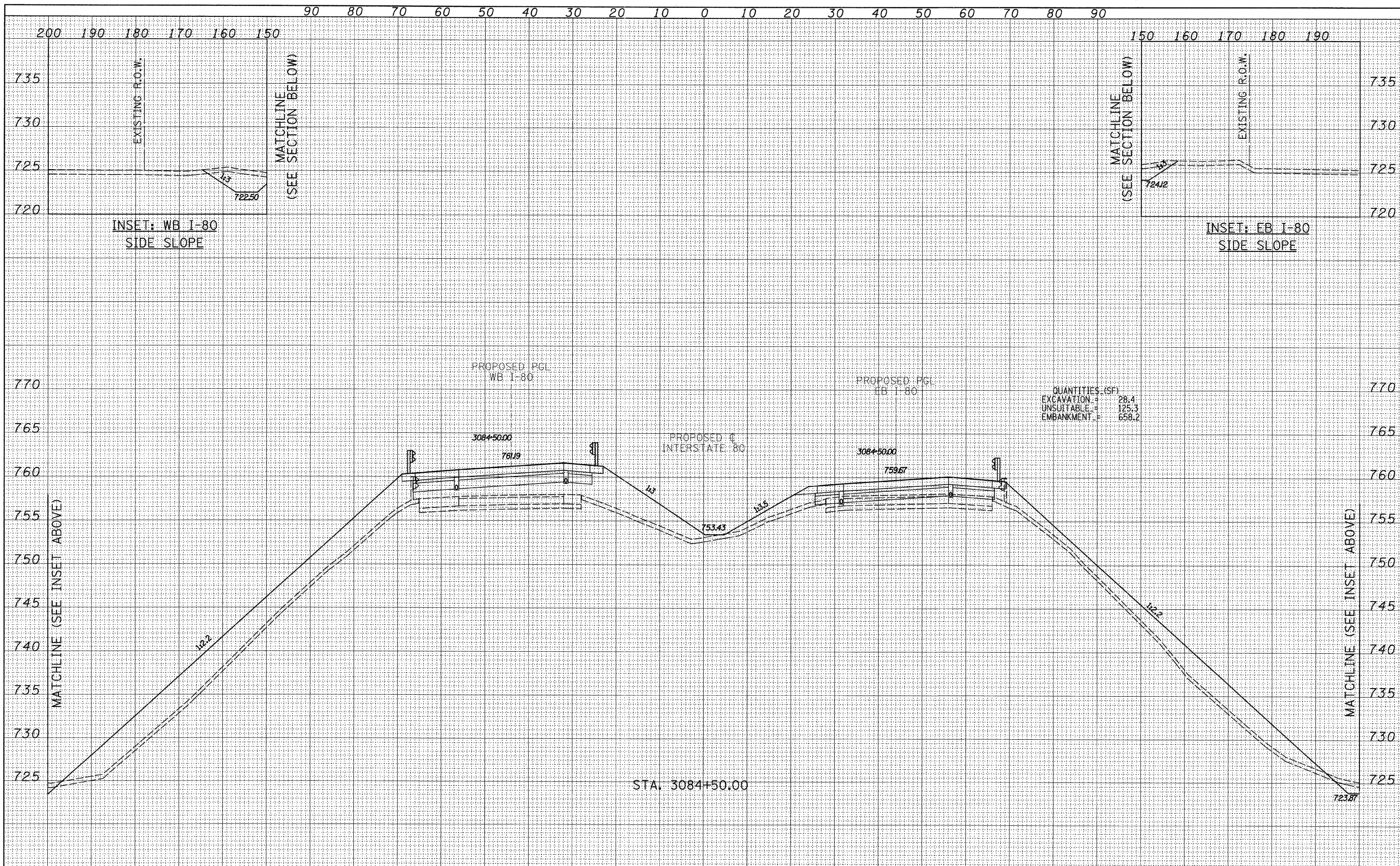


DATE	
BY	
FINAL SURVEY	SURVEYED
NOTE BOOK	PLOTTED
NO.	TEMPLATE
	AREAS CHECKED

DATE	
BY	
ORIGINAL SURVEY	SURVEYED
NOTE BOOK	PLOTTED
NO.	TEMPLATE
	AREAS CHECKED



TYLIN INTERNATIONAL USER NAME = PLOT SCALE = PLOT DATE =	DESIGNED - JDF DRAWN - JDF CHECKED - JPM DATE - 9/7/2011	REVISED - REVISED - REVISED - REVISED -	STATE OF ILLINOIS DEPARTMENT OF TRANSPORTATION	F.A.I. ROUTE 80 (I-80) PROPOSED CROSS SECTIONS		F.A.I. RTE. 80	SECTION [06-5HBR-1.VBR(06-6)RS-3&I]	COUNTY BUREAU	TOTAL SHEETS 249	SHEET NO. 230
	STA. 3084+50.00 TO STA. 3084+50.00	SCALE: 1" = 10' V, 1" = 100' H		SHEET NO. OF SHEETS	FED. ROAD DIST. NO. [ILLINOIS] FED. AID PROJECT	CONTRACT NO. 66686				

P:\602429\I(1-80)\Road\602429.10.A\366686-sht-xsht.dgn