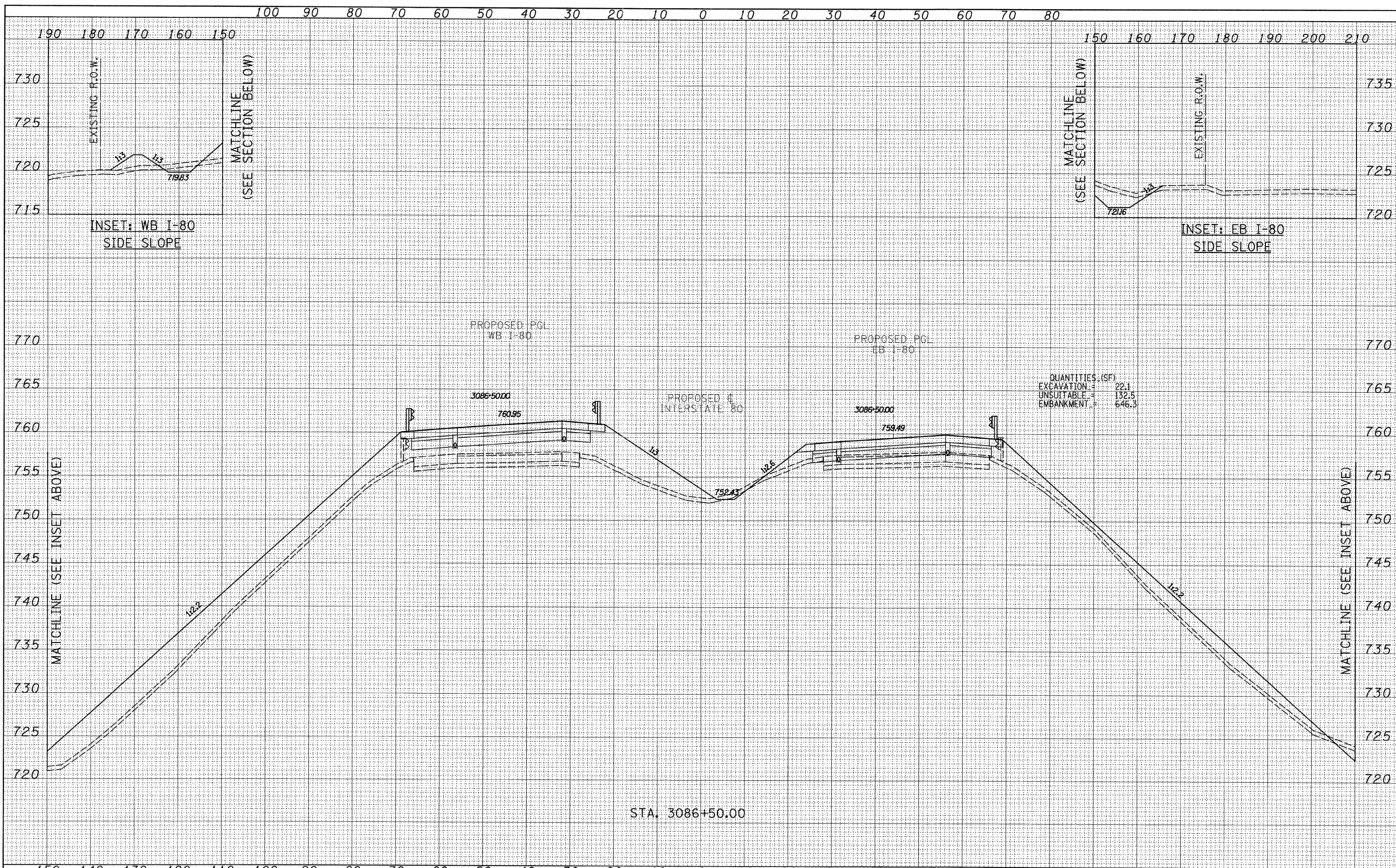


DATE	
BY	
NO.	
FINAL SURVEY	DESIGNED
NOTE BOOK	PLOTTED
NO.	TEMPLATE
	AREAS
	CHECKED

DATE	
BY	
NO.	
ORIGINAL SURVEY	DESIGNED
NOTE BOOK	PLOTTED
NO.	TEMPLATE
	AREAS
	CHECKED



<b>TYLIN INTERNATIONAL</b> USER NAME = PLOT SCALE = PLOT DATE =	DESIGNED - JDF DRAWN - JDF CHECKED - JPM DATE - 9/7/2011	REVISED - REVISED - REVISED - REVISED -	<b>STATE OF ILLINOIS</b> <b>DEPARTMENT OF TRANSPORTATION</b>	<b>F.A.I. ROUTE 80 (I-80)</b> <b>PROPOSED CROSS SECTIONS</b>		F.A.I. RTE. 80	SECTION (106-5)HBR-1,VBR(106-6)RS-3&I	COUNTY BUREAU	TOTAL SHEETS 249	SHEET NO. 234	CONTRACT NO. 66686
	SCALE: 1" = 10' V, 1" = 80' H			SHEET NO. OF SHEETS	STA. 3086+50.00 TO STA. 3086+50.00	FED. ROAD DIST. NO. ILLINOIS FED. AID PROJECT					

P:\602429.1(I-80)\Road\602429.10.A\366686-sht-xsht.dgn