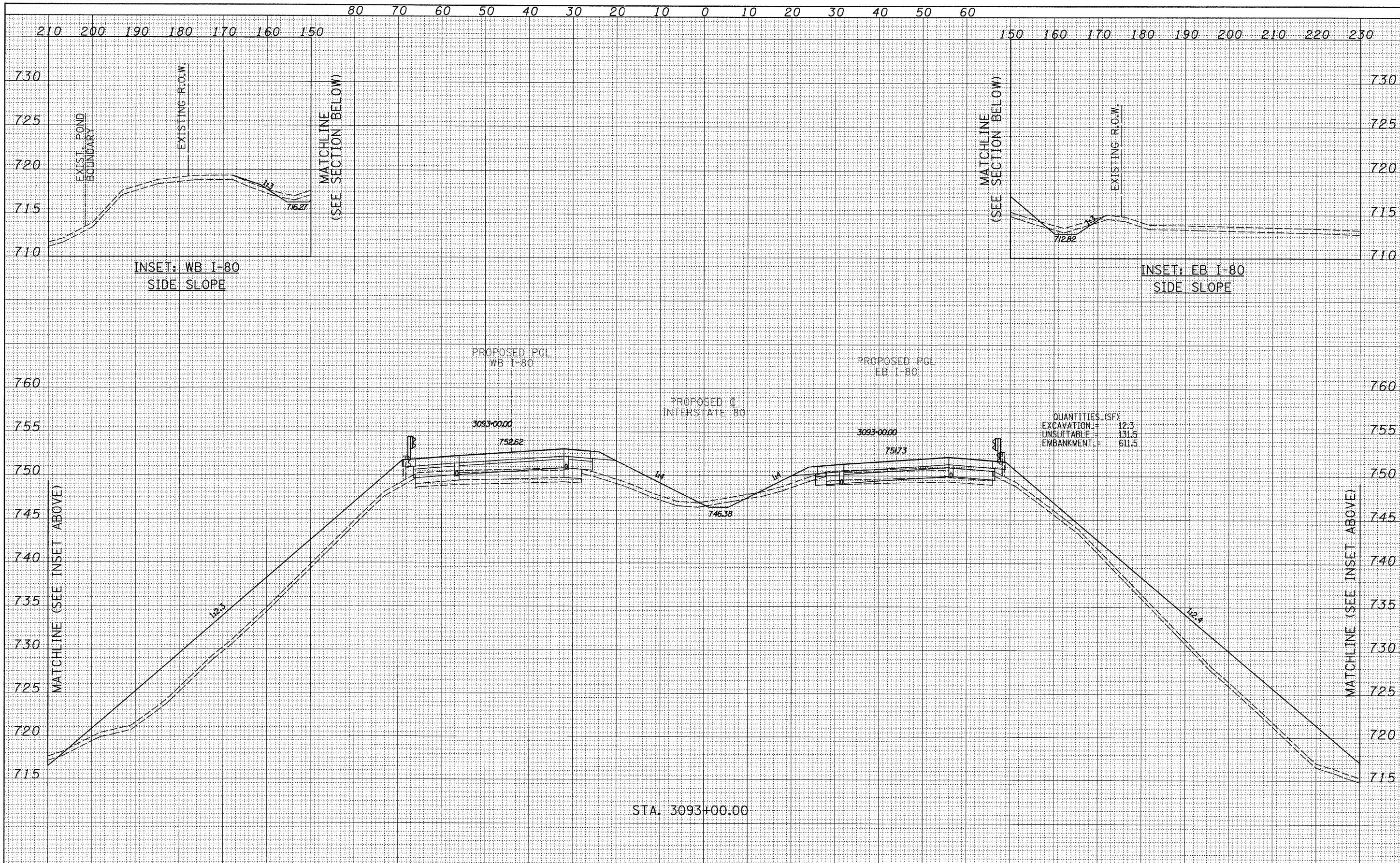


DATE	BY
REVISIONS	
DESIGNED	JDF
DRAWN	JDF
CHECKED	JPM
DATE	9/7/2011

DATE	BY
REVISIONS	
DESIGNED	JDF
DRAWN	JDF
CHECKED	JPM
DATE	9/7/2011



<b>TYLIN INTERNATIONAL</b> USER NAME = PLOT SCALE = PLOT DATE =	DESIGNED - JDF DRAWN - JDF CHECKED - JPM DATE - 9/7/2011	REVISED - REVISED - REVISED - REVISED -	<b>STATE OF ILLINOIS</b> <b>DEPARTMENT OF TRANSPORTATION</b>		<b>F.A.I. ROUTE 80 (I-80)</b> <b>PROPOSED CROSS SECTIONS</b>		F.A.I. RTE. 80 SECTION (06-5)HBR-1,VBR(06-6)RS-3&I COUNTY BUREAU TOTAL SHEETS 249 SHEET NO. 74 CONTRACT NO. 66686
	SCALE: 1" = 20' V SHEET NO. OF SHEETS STA. 3093+00.00 TO STA. 3093+00.00			FED. ROAD DIST. NO. ILLINOIS FED. AID PROJECT			

P:\602429.1(I-80)\Road\602429.10.A\0366686-sht-xsht.dgn