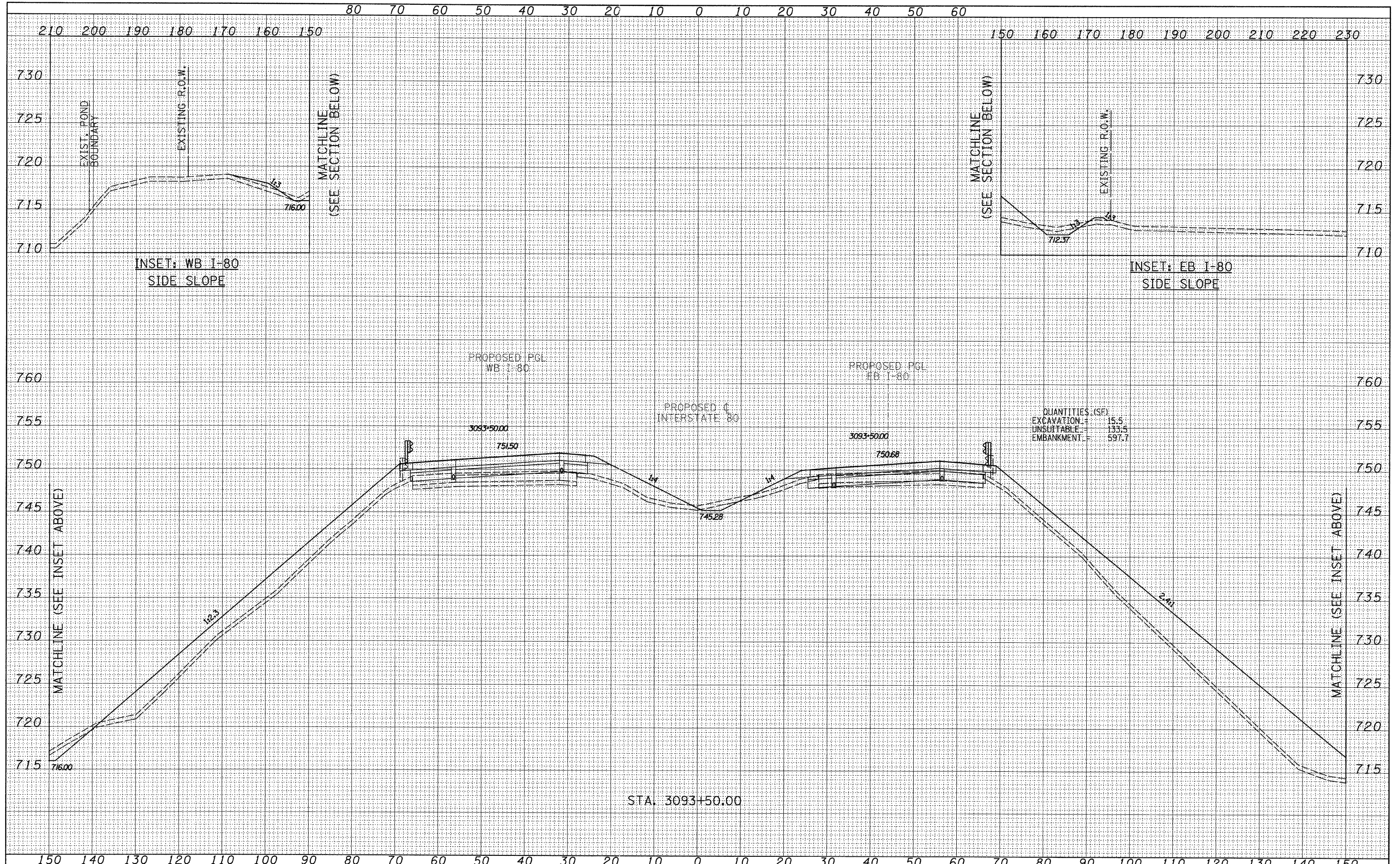


DATE	
BY	
REVISIONS	
NO.	
DATE	
BY	
REVISIONS	
NO.	
DATE	
BY	
REVISIONS	
NO.	
DATE	
BY	
REVISIONS	
NO.	

DATE	
BY	
REVISIONS	
NO.	
DATE	
BY	
REVISIONS	
NO.	
DATE	
BY	
REVISIONS	
NO.	



TYLIN INTERNATIONAL USER NAME = PLOT SCALE = PLOT DATE =	DESIGNED - JDF DRAWN - JDF CHECKED - JPM DATE - 9/7/2011	REVISED - REVISED - REVISED - REVISED -	STATE OF ILLINOIS DEPARTMENT OF TRANSPORTATION	F.A.I. ROUTE 80 (I-80) PROPOSED CROSS SECTIONS		F.A.I. RTE. 80 SECTION [106-5]HBR-1,VBR(06-6)RS-3&I COUNTY BUREAU TOTAL SHEETS 298 SHEET NO. 248 CONTRACT NO. 66686
	STA. 3093+50.00 TO STA. 3093+50.00	SCALE: 1" = 10' H SHEET NO. OF SHEETS		FED. ROAD DIST. NO. ILLINOIS FED. AID PROJECT		

P:\602429\I-80\Road\602429.10_A\366686-sht-xssht.dgn