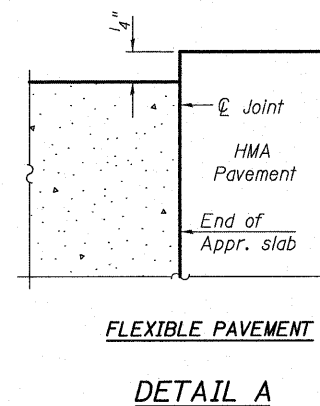
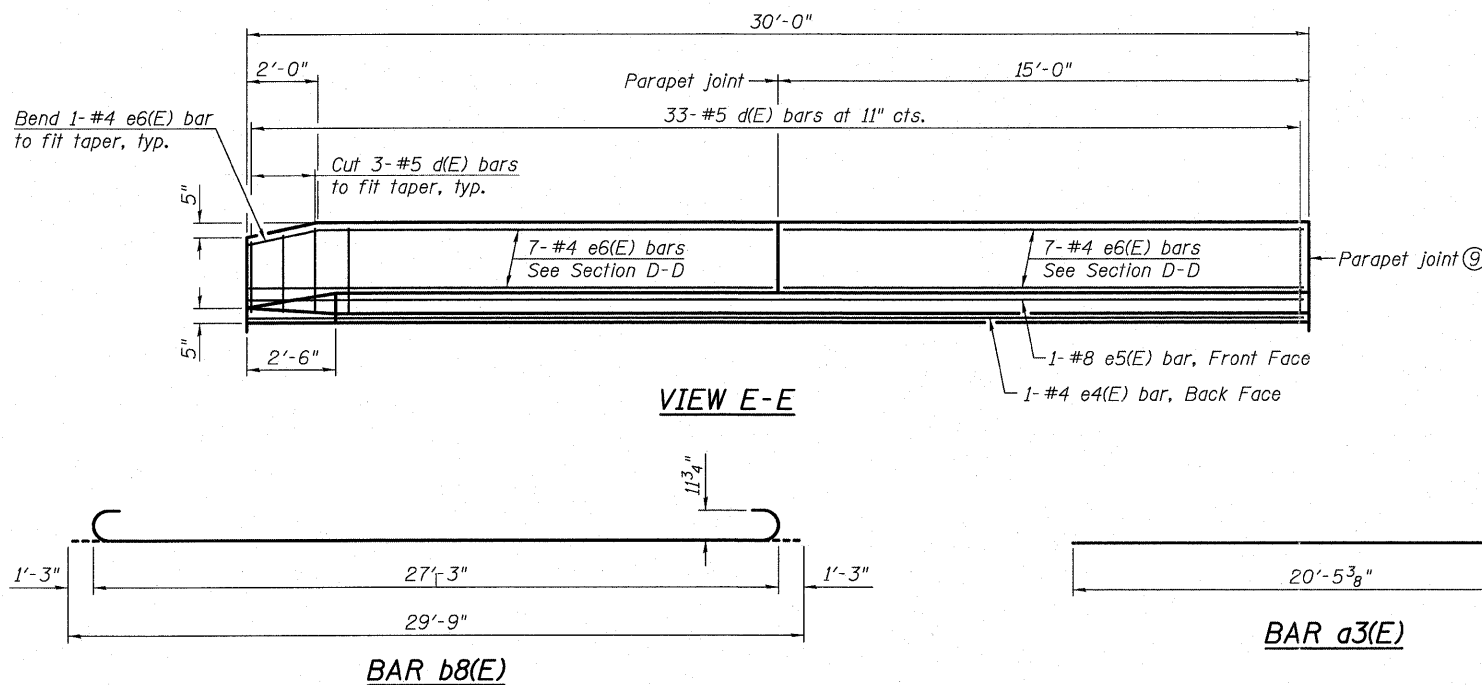


BILL OF MATERIAL
(Two Approaches)

Bar	No.	Size	Length	Shape
a(E)	92	#5	26'-10"	—
a1(E)	48	#6	12'-1"	—
a2(E)	50	#4	26'-10"	—
a3(E)	50	#4	20'-10"	—
a4(E)	92	#5	20'-7"	—
b7(E)	84	#4	29'-8"	—
b8(E)	230	#9	29'-9"	—
d(E)	66	#5	5'-7"	Λ
d1(E)	66	#5	4'-8"	Λ
e4(E)	2	#4	29'-8"	—
e5(E)	2	#8	29'-8"	—
e6(E)	28	#4	14'-8"	—
t(E)	200	#4	9'-8"	—
w(E)	80	#5	26'-10"	—
w1(E)	80	#5	20'-7"	—
Concrete Structures		Cu. Yd.	29.7	
Concrete Superstructure		Cu. Yd.	149.7	
Reinforcement Bars, Epoxy Coated		Pound	38,370	



- Notes:
- Approach slab and parapet concrete shall be paid for as Concrete Superstructure.
 - Approach footing concrete shall be paid for as Concrete Structures.
 - Reinforcement shall be paid for as Reinforcement Bars, Epoxy Coated.
 - For v(E) bar details, see sheet 14 of 20.
 - The approach footing maximum applied service bearing pressure (Qmax) = 2.0 ksf.
 - For bar splicer details, see sheet 18 of 20.
 - Cost of excavation for approach footing included with Concrete Structures.
 - For Porous Granular Embankment, Special and drainage treatment details, see sheet 2 of 20.
 - For additional parapet details and parapet joint details, see sheet 10 of 20.
 - Tilt #9 b8(E) bars as required to maintain clearance.
 - Cost included with Concrete Superstructure.
 - For d(E) and d1(E) bar details, see sheet 10 of 20.
 - Core and set #5 d1(E) bar according to Article 509.06 of the Standard Specifications. Cored holes shall be roughened or scored per manufacturer's recommendations. Maximum depth of hole shall not exceed 6".
 - West Approach looking East shown. East approach looking West is similar except Bar Splicers are located on opposite side of Stage Const. Joint, see Approach Plan on sheet 11 of 20.
 - For Bicycle and Parapet Railing details, see sheet 13 of 20. For post spacing, see sheet 2 of 20.