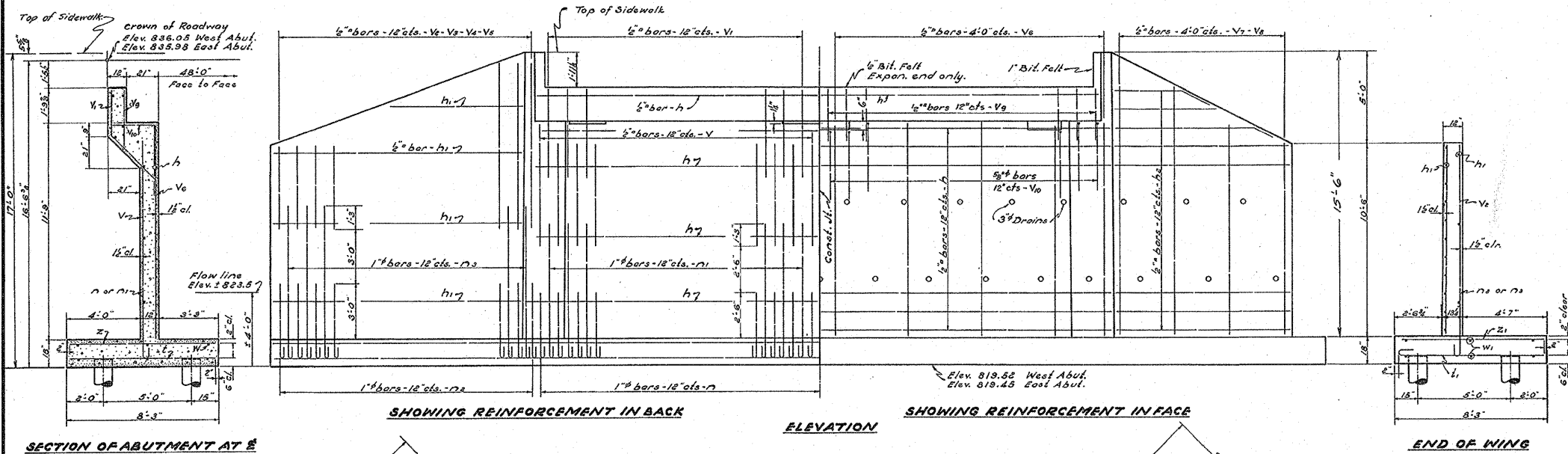


B.M. 9 - R.R. spike in 36" cottonwood
45' Rl. sta. 74+00 Elev. 830.25
Present concrete abutments to be removed by Contractor.

STATE OF ILLINOIS
DEPARTMENT OF PUBLIC WORKS & BUILDINGS
DIVISION OF HIGHWAYS

ROAD DIST. NO.	SECTION	COUNTY	TOTAL SHEETS	SHEET NO.
64	126B-1	DeKalb	10	9
SHEET NO. 3 OF 14 SHEETS				



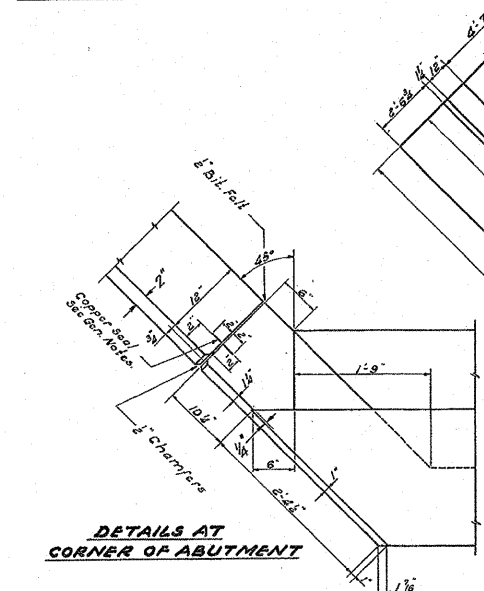
SECTION OF ABUTMENT AT E

SHOWING REINFORCEMENT IN BACK

ELEVATION

SHOWING REINFORCEMENT IN FACE

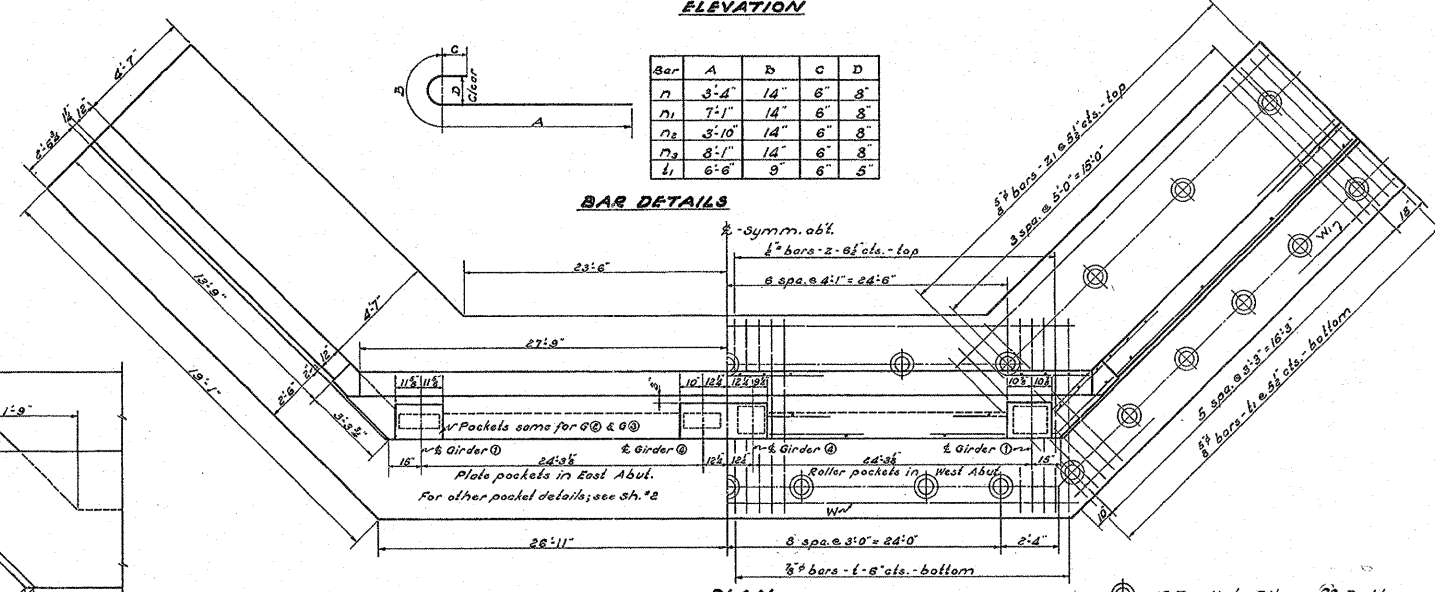
END OF WING



DETAILS AT CORNER OF ABUTMENT

Bar	A	B	C	D
n	3'-2"	14"	6"	8"
n1	7'-1"	14"	6"	8"
n2	3'-10"	14"	6"	8"
n3	8'-1"	14"	6"	8"
l1	6'-6"	9"	6"	5"

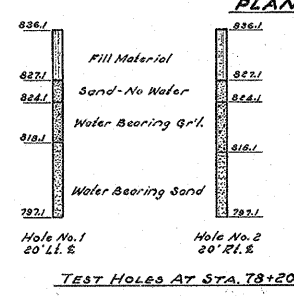
BAR DETAILS



BILL OF MATERIAL - 2 ABUTS.

Bar	No.	Size	Length
V	112	1/2"	5'-6"
V1	110	"	6'-0"
V2	16	"	4'-6"
V3	16	"	6'-0"
V4	16	"	7'-6"
V5	12	"	9'-0"
V6	20	"	11'-6"
V7	8	"	13'-6"
V8	8	"	10'-6"
h	72	"	29'-6"
h1	64	"	13'-3"
h2	8	"	5'-6"
n	110	1"	5'-0"
n1	112	"	3'-9"
n2	60	"	5'-6"
n3	58	"	9'-9"
l	218	3/8"	7'-0"
l1	160	3/8"	7'-9"
z	196	1/2"	7'-0"
z1	148	3/8"	7'-0"
w	24	1/2"	28'-0"
w1	24	3/4"	18'-6"
v9	110	1/2"	3'-0"
v10	110	3/8"	6'-6"
Class X Concrete			cuyd. 176.1
Reinforcing Steel			lbs. 19450
Unbr. Piling (20'lg)			lin.ft. 1920
Unbr. Test Piles			each 2
Remov. Existing Substr.			ea. 1

COMPUTED	<i>J.R. Owen</i>	EXAMINED	8-3-1937
CHECKED	<i>M. J. Petts</i>	APPROVED	<i>H.F. Swartz</i>
DRAWN	<i>N.D. ...</i>		
CHECKED	<i>M. J. Petts</i>		
SPECIAL	ASSEMBLED		
	CHECKED		



TEST HOLES AT STA. 78+20

SOUTH BRANCH OF KISHWAUKEE RIVER
S.B.I.R.T.E. 64 SEC. 126 B-1
DEKALB COUNTY
STA. 78+50