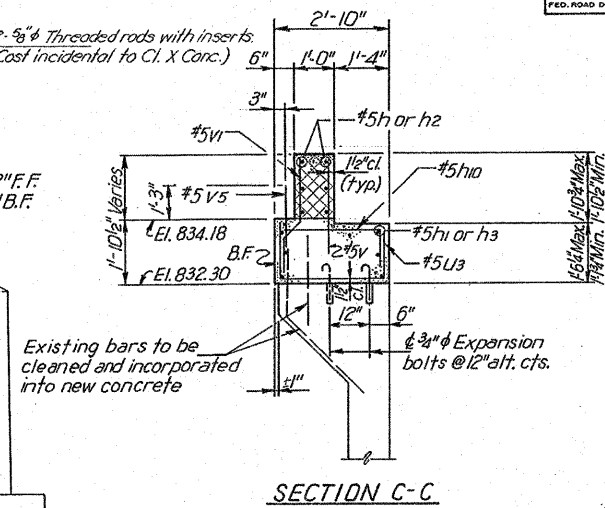
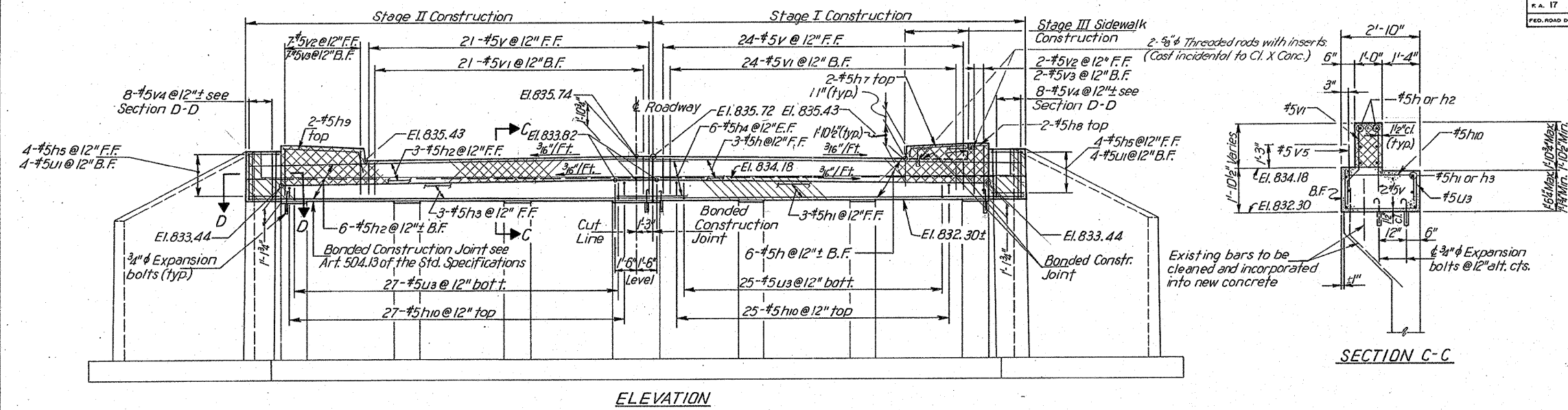
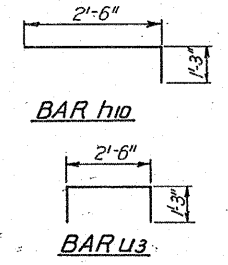
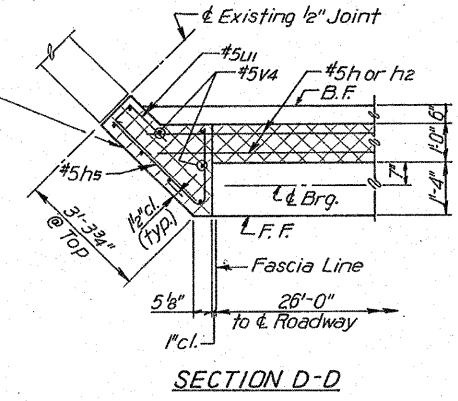
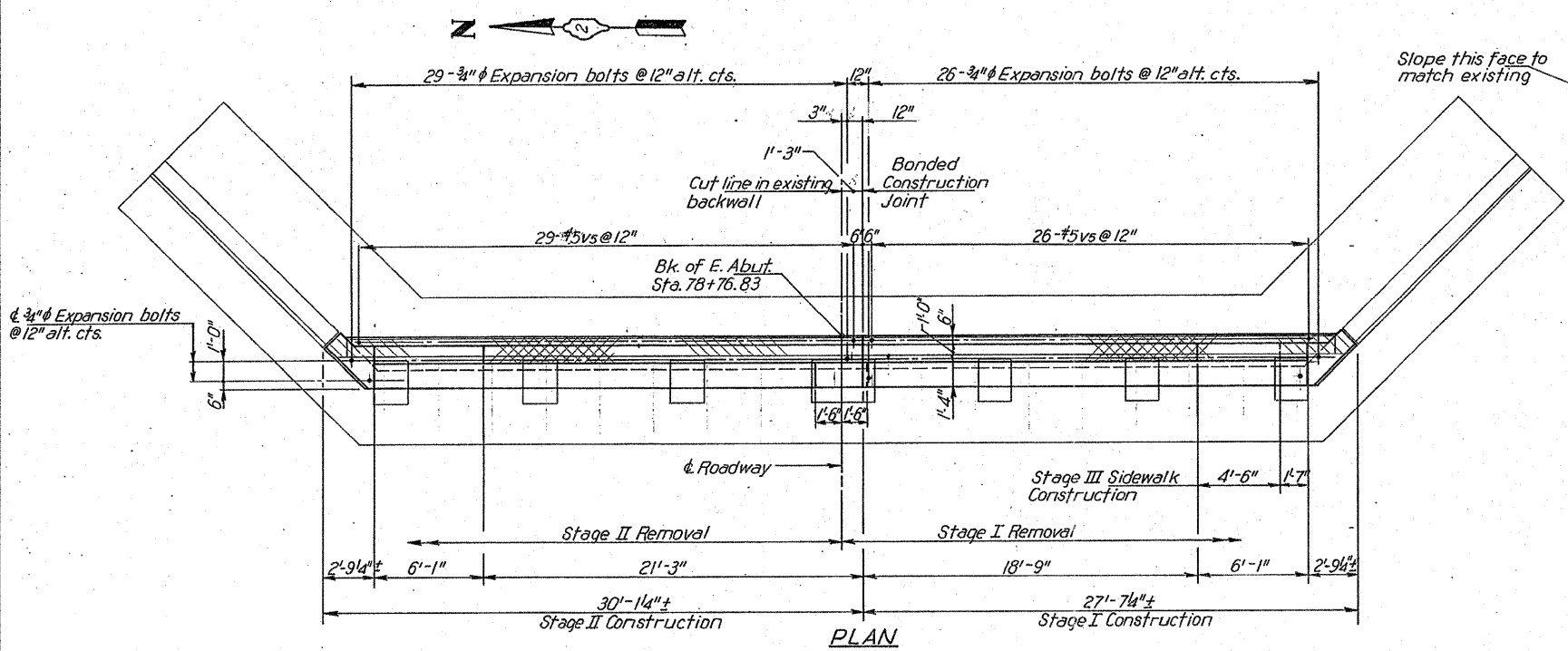


STATE OF ILLINOIS
DEPARTMENT OF TRANSPORTATION

ROUTE NO.	SECTION	COUNTY	TOTAL SHEETS	SHEET NO.	SHEET NO.
S.B.L. R.A. 17	126(B-1)R	DEKALB	16	16	8
FED. ROAD DIST. NO. 1 ILLINOIS FED. AID PROJECT			SHEETS 8		



BILL OF MATERIAL				
BAR	No.	SIZE	LENGTH	SHAPE
h1	9	#5	26'-3"	—
h1	3	#5	25'-0"	—
h2	9	#5	28'-9"	—
h3	3	#5	27'-6"	—
h4	12	#5	4'-4"	┘
h5	8	#5	5'-4"	┘
h7	2	#5	4'-9"	┘
h8	2	#5	1'-3"	—
h9	2	#5	7'-1"	┘
h10	52	#5	3'-9"	—
v1	45	#5	2'-9"	—
v1	45	#5	3'-3"	┘
v2	9	#5	3'-9"	—
v3	9	#5	4'-3"	—
v4	16	#5	3'-6"	—
v5	55	#5	2'-6"	—
u1	8	#5	3'-3"	┘
u3	52	#5	5'-0"	┘
Class X Concrete	Cu. Yd.	13.4		
Reinforcement Bars	Lbs.	1870		
3/4" Expansion Bolts	Each	55		
Concrete Removal	Cu. Yd.	1.4		



Note:
For bar details not shown see Sht. No. 7

LEGEND

Indicates concrete removal, vertical reinforcement extending into removed area shall be cleaned and incorporated into the new construction.

Indicates area to be poured after beams are in place.

Notes:

All exposed edges shall have standard 3/8" chamfers.
For detail of construction joint see Sht. No. 7

DESIGNED	J.M.P.
CHECKED	S.F.
DRAWN	K.A.C.
CHECKED	J.M.P.

REVISIONS	
NAME	DATE

EAST ABUTMENT DETAILS
F.A. ROUTE 17 (ILL. 64)
SECTION 126 (B-1) R
DEKALB COUNTY
STA. 78+50.00

SCALE: VERT. HORIZ.
DATE 7-22-81