

| F.A. RTE. | SECTION | COUNTY | TOTAL SHEETS | SHEET NO. |
|-----------|-----------------------------|----------|--------------------|-----------|
| VARIOUS | D3 BRIDGE DECK SEALING 2012 | VARIOUS | 11 | 1 |
| | | ILLINOIS | CONTRACT NO. 66B41 | |

INDEX OF SHEETS

- 1 COVER SHEET
- 2 SUMMARY OF QUANTITIES
- 3-6 BRIDGE SEALING SCHEDULE
- 7-10 LOCATION MAPS
- 11 SEALING DETAILS

STANDARDS

- 000001-06 STANDARD SYMBOLS, ABBREVIATIONS AND PATTERNS
- 701201-04 LANE CLOSURE, 2L, 2W, DAY ONLY, FOR SPEEDS \geq 45 MPH
- 701400-05 APPROACH TO LANE CLOSURE, FREEWAY/EXPRESSWAY
- 701406-06 LANE CLOSURE, FREEWAY/EXPRESSWAY, DAY OPERATIONS ONLY
- 701411-07 LANE CLOSURE, MULTILANE, AT ENTRANCE OR EXIT RAMP FOR SPEEDS \geq 45 MPH
- 701501-06 URBAN LANE CLOSURE, 2L, 2W, UNDIVIDED
- 701601-07 URBAN LANE CLOSURE, MULTILANE, 1W OR 2W WITH NONTRAVERSABLE MEDIAN
- 701602-05 URBAN LANE CLOSURE, MULTILANE, 2W WITH BIDIRECTIONAL LEFT TURN LANE
- 701606-07 URBAN LANE CLOSURE, MULTILANE, 2W WITH MOUNTABLE MEDIAN
- 701901-01 TRAFFIC CONTROL DEVICES

STATE OF ILLINOIS DEPARTMENT OF TRANSPORTATION

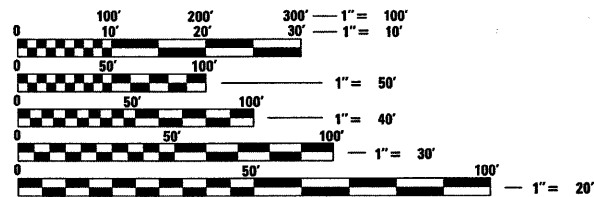
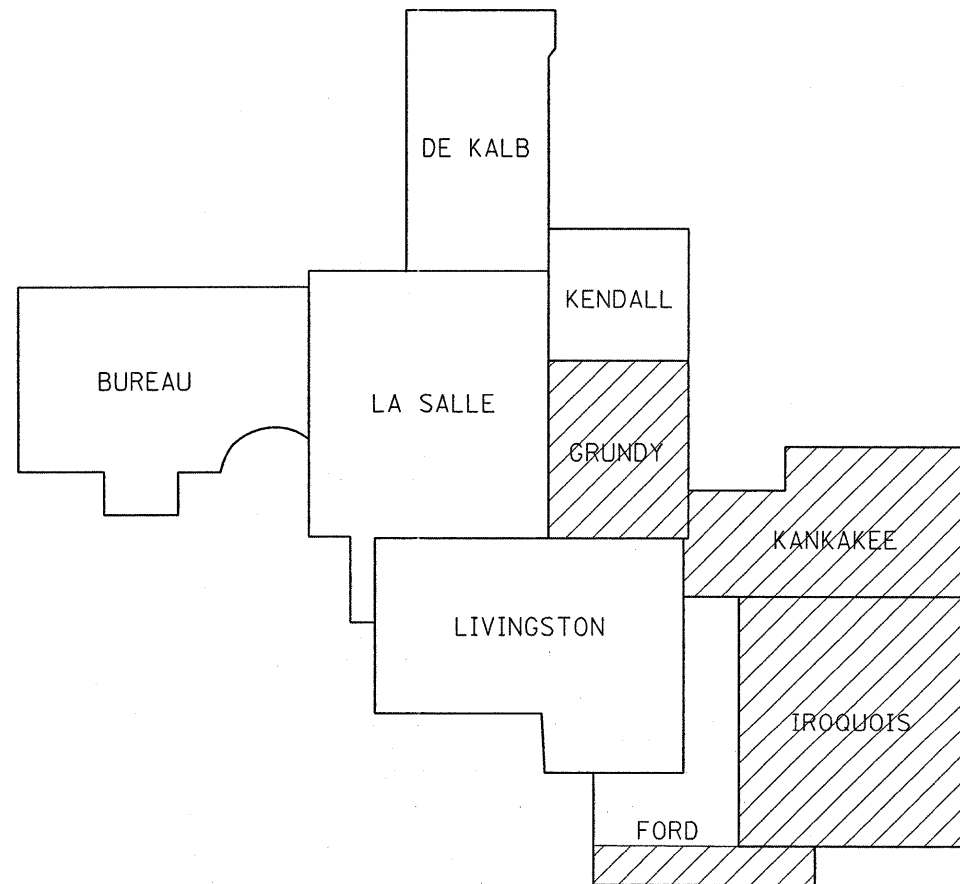
DIVISION OF HIGHWAYS

PROPOSED HIGHWAY PLANS

VARIOUS ROUTES SECTION D3 BRIDGE DECK SEALING 2012

BRIDGE DECK SEALING VARIOUS COUNTIES

C-93-113-11



FULL SIZE PLANS HAVE BEEN PREPARED USING STANDARD ENGINEERING SCALES. REDUCED SIZED PLANS WILL NOT CONFORM TO STANDARD SCALES. IN MAKING MEASUREMENTS ON REDUCED PLANS, THE ABOVE SCALES MAY BE USED.

J.U.L.I.E.
JOINT UTILITY LOCATION INFORMATION FOR EXCAVATION
1-800-892-0123
OR 811

PROJECT ENGINEER: CRAIG REED 815-434-8420
UNIT CHIEF: BRAD DUNCAN 815-434-8562

CONTRACT NO. 66B41

STATE OF ILLINOIS
DEPARTMENT OF TRANSPORTATION
DIVISION OF HIGHWAYS

SUBMITTED 8-12-2011
Eric S. Thibault
DEPUTY DIRECTOR OF HIGHWAYS, REGION ENGINEER

October 14 2011
Scott E. Stitt, P.E.
ACTING ENGINEER OF DESIGN AND ENVIRONMENT

October 14 2011
Christene M. Reed
DIRECTOR OF HIGHWAYS, CHIEF ENGINEER

PRINTED BY THE AUTHORITY
OF THE STATE OF ILLINOIS

| CODE NO. | ITEM | UNIT | 100% STATE CONSTR. CODE |
|----------|---|-------|----------------------------|
| | | | 0014 TOTAL QUANTITY |
| 58700300 | CONCRETE SEALER | SQ FT | 1,041,229 |
| 67100100 | MOBILIZATION | L SUM | 1 |
| 70100420 | TRAFFIC CONTROL AND PROTECTION, STANDARD 701411 | EACH | 4 |
| 70100450 | TRAFFIC CONTROL AND PROTECTION, STANDARD 701201 | L SUM | 1 |
| 70100700 | TRAFFIC CONTROL AND PROTECTION, STANDARD 701406 | L SUM | 1 |
| 70102620 | TRAFFIC CONTROL AND PROTECTION, STANDARD 701501 | L SUM | 1 |
| 70102625 | TRAFFIC CONTROL AND PROTECTION, STANDARD 701606 | L SUM | 1 |
| 70102630 | TRAFFIC CONTROL AND PROTECTION, STANDARD 701601 | L SUM | 1 |
| 70102632 | TRAFFIC CONTROL AND PROTECTION, STANDARD 701602 | L SUM | 1 |

GENERAL NOTES

ANY REFERENCE TO A STANDARD IN THESE PLANS SHALL BE INTERPRETED TO MEAN THE EDITION AS INDICATED BY THE SUBNUMBER SHOWN IN THE LIST OF STANDARDS OR THE COPY INCLUDED IN THESE PLANS.

THE ENGINEER WILL BE THE SOLE JUDGE CONCERNING CURING TIME FOR THE SEALER.

STATE OF ILLINOIS
DEPARTMENT OF TRANSPORTATION
DISTRICT THREE

PREPARED BY: Don Bernick
DISTRICT STUDIES & PLANS ENGINEER

DATE: 8-12-11

EXAMINED BY: Herbert D. Wong
DISTRICT CONSTRUCTION ENGINEER

John J. [Signature]
DISTRICT MATERIALS ENGINEER

Bruce C. Heber
DISTRICT OPERATIONS ENGINEER

| | | | | | | | | | | | | | |
|--|------------------------------|------------|-----------|---|---|-----------|----|--------|-----------|---------|---------|--------------|-----------|
| FILE NAME = | USER NAME = verdnem1 | DESIGNED - | REVISED - | STATE OF ILLINOIS DEPARTMENT OF TRANSPORTATION | SUMMARY OF QUANTITIES | | | | F.A. RTE. | SECTION | COUNTY | TOTAL SHEETS | SHEET NO. |
| ci\pw_work\pvidot\verdnem1\d0266091\0366841-sheets.dgn | | DRAWN - | REVISED - | | SCALE: | SHEET NO. | OF | SHEETS | STA. | TO STA. | VARIOUS | 2 | 11 |
| | PLOT SCALE = 50.0000' / 1in. | CHECKED - | REVISED - | | *D3 BRIDGE DECK SEALING 2012 CONTRACT NO. 66B41 | | | | | | | | |
| | PLOT DATE = 8/1/2011 | DATE - | REVISED - | | ILLINOIS FED. AID PROJECT | | | | | | | | |

CONCRETE SEALER

| STRUCTURE NUMBER | FACILITY CARRIED | APPROXIMATE LOCATION | FEATURE CROSSED | DECK WIDTH FEET | PARAPET SURFACE FEET | MEDIAN SURFACE FEET | DECK LENGTH FEET | SEAL AREA SQ FT | TRAFFIC CONTROL AND PROTECTION STANDARD |
|---------------------------------|-----------------------|------------------------------|--------------------|-----------------|----------------------|---------------------|------------------|-----------------|---|
| FORD COUNTY INTERSTATE | | | | | | | | | |
| 027-0052 | I-57 SOUTHBOUND | 2.37 MILES SOUTH OF ILL 9 | BIG FOUR | 32.5 | 4.6 | | 280.8 | 10,418 | 701406 * |
| 027-0053 | I-57 NORTHBOUND | | DITCH | 32.5 | 4.6 | | 280.8 | 10,418 | 701406 * |
| NON-INTERSTATE | | | | | | | | | |
| 027-0010 | ILL 9 | JCT I-57 AND ILL 9 | I-57 | 37.5 | 4.6 | 18 | 221.9 | 13,336 | 701201 * |
| 027-0026 | ILL 54 | 2.1 MI S OF ILL 9 & 47 | DRAINAGE DITCH | 40 | 2 | | 22.5 | 945 | 701201 * |
| 027-0028 | CH 5 | 2.8 MI S OF ILL 9 | I-57 | 26.5 | 5 | | 233.8 | 7,365 | 701201 |
| 027-0047 | TR 72 | 2.4 MI N OF ILL 9 | I-57 | 26.5 | 5 | | 253 | 7,970 | 701201 |
| 027-0048 | TR 91 | 1.3 MI N OF ILL 9 | I-57 | 28.5 | 5 | | 241.7 | 8,097 | 701201 |
| 027-0049 | TR 105A | 1.8 MI S OF ILL 9 | I-57 | 26.5 | 5 | | 222 | 6,993 | 701201 |
| 027-0058 | ILL 54 (W) | 4.1 MI S OF ILL 9 & 47 | DRAINAGE DITCH | 40 | 1.6 | | 16.8 | 699 | 701201 * |
| 027-0084 | ILL 9 & 47 | 0.3 MI S OF ILL 9 | DRUMMER CREEK | 36 | 7.4 | | 87.5 | 3,798 | 701501 |
| 027-0085 | ILL 9 & 47 | 0.1 MI N OF ILL 54 | DRUMMER CREEK | 36 | 7.4 | | 145 | 6,293 | 701501 |
| 027-0086 | ILL 54 | 0.5 MI W GIBSON CITY | DRUMMER CREEK | 32 | 7.4 | | 106.2 | 4,184 | 701201 |
| 027-0087 | ILL 54 | 1.0 MI SW GIBSON CITY | DRUMMER CREEK | 32 | 7.4 | | 73.6 | 2,900 | 701201 |
| 027-0088 | ILL 54 | 2.5 MI SW GIBSON CITY | DRUMMER CREEK BR | 32 | 7.4 | | 64.2 | 2,529 | 701201 |
| 027-0089 | ILL 47 | 3.5 MI S OF ILL 9 | DRUMMER CREEK | 35.4 | 7.4 | | 133 | 5,692 | 701201 |
| FORD COUNTY SUB-TOTAL | | | | | | | | 91,636 | |
| GRUNDY COUNTY INTERSTATE | | | | | | | | | |
| 032-0005 | I-55 NORTHBOUND | 4.1 MILES SOUTH OF REED ROAD | Mazon River | 39 | 7.4 | | 233.7 | 10,844 | 701406 |
| 032-0006 | I-55 SOUTHBOUND | | AT TR 125 | | 39 | 7.4 | | 233.7 | 10,844 |
| 032-0007 | I-55 NORTHBOUND | 3.2 MILES SOUTH OF REED ROAD | I.C.G. | 39 | 7.4 | | 243.3 | 11,289 | 701406 |
| 032-0008 | I-55 SOUTHBOUND | | RAILROAD | | 39 | 7.4 | | 243.3 | 11,289 |
| NON-INTERSTATE | | | | | | | | | |
| 032-0023 | ILL 53 | 1.3 MI N OF GARDNER | Mazon River | 42.5 | 5 | | 200.5 | 9,524 | 701201 |
| 032-0025 | US 6 | 4.9 MI E OF ILL 47 | AUX SABLE CREEK | 42.5 | 5 | | 164.1 | 7,795 | 701201 |
| 032-0090 | FAS 272/BRACEVILLE RD | 2.5 MI S OF REED RD | I-55 | 30 | 7.4 | | 221 | 8,265 | 701201 |
| 032-0091 | FAS 299/REED RD | 0.1 MI S OF WILL CO LN | I-55 | 57 | 7.4 | 5.4 | 165.2 | 11,531 | 701201 |
| 032-0092 | TR 182 | 4.8 MI S OF REED RD | I-55 | 30 | 7.4 | | 224.1 | 8,381 | 701201 |
| 032-0093 | FAS 292/GARDNER RD | GARDNER RD INTERCHANGE | I 55 | 57 | 7.4 | 5.4 | 165.6 | 11,559 | 701201 |
| 032-0094 | ILL 47 | 7.2 MI N OF I-55 | MURRAY CREEK | 40 | 7.4 | | 109.6 | 5,195 | 701201 |
| 032-0098 | ILL 113 | 3.1 MI E OF ILL 47 | Mazon River | 35.4 | 7.4 | | 254.3 | 10,884 | 701201 |
| 032-0110 | ILL 47 | N OF I-55 | BREWSTER RUN | 50.3 | 7.6 | | 70 | 4,053 | 701201 |
| 032-0116 | ILL 47 | 6.1 MI N OF I-55 | W FORK Mazon River | 40 | 7.6 | | 140 | 6,664 | 701201 |
| GRUNDY COUNTY SUB-TOTAL | | | | | | | | 128,117 | |

* STRUCTURE HAS EXISTING PCC OVERLAY. ADDITIONAL DRYING TIME MAY BE REQUIRED.

| | | | | | | | | | | | | |
|---|-----------------------|------------|-----------|---|------------------------------|-------------------------|------|-----------|---------|---------|--------------------|-----------|
| FILE NAME = | USER NAME = verdinemi | DESIGNED - | REVISED - | STATE OF ILLINOIS DEPARTMENT OF TRANSPORTATION | SEALING SCHEDULE | | | F.A. RTE. | SECTION | COUNTY | TOTAL SHEETS | SHEET NO. |
| ct:\pw_work\p\p\dot\verd\emil\02266891\0366841-sheets.dgn | | DRAWN - | REVISED - | | SCALE: | SHEET NO. 1 OF 4 SHEETS | STA. | TO STA. | VAR | VARIOUS | 3 | 11 |
| PLOT SCALE = 50.0000' / in. | | CHECKED - | REVISED - | | *D3 BRIDGE DECK SEALING 2012 | | | | | | | |
| PLOT DATE = 8/1/2011 | | DATE - | REVISED - | | ILLINOIS FED. AID PROJECT | | | | | | | |
| | | | | | | | | | | | CONTRACT NO. 66B41 | |

CONCRETE SEALER

| STRUCTURE NUMBER | FACILITY CARRIED | APPROXIMATE LOCATION | FEATURE CROSSED | DECK WIDTH FEET | PARAPET SURFACE FEET | MEDIAN SURFACE FEET | DECK LENGTH FEET | SEAL AREA SQ FT | TRAFFIC CONTROL AND PROTECTION STANDARD |
|----------------------------|------------------|---------------------------------------|---------------------|-----------------|----------------------|---------------------|------------------|-----------------|---|
| IROQUOIS COUNTY INTERSTATE | | | | | | | | | |
| 038-0001 | I-57 SOUTHBOUND | 1.0 MILES SOUTH OF GILMAN INTERCHANGE | SPRING CREEK | 40 | 1 | | 90.8 | 3,723 | 701406 * |
| 038-0002 | I-57 NORTHBOUND | | CREEK | 40 | 1 | | 90.8 | 3,723 | 701406 * |
| 038-0003 | I-57 SOUTHBOUND | 9.0 MILES SOUTH OF ASHKUM INTERCHANGE | IC | 40 | 4 | | 226.6 | 9,970 | 701406 * |
| 038-0004 | I-57 NORTHBOUND | | RAILROAD | 40 | 4 | | 226.6 | 9,970 | 701406 * |
| 038-0005 | I-57 NORTHBOUND | 8.8 MILES SOUTH OF ASHKUM INTERCHANGE | AT & SF | 40 | 4 | | 174 | 7,656 | 701406 * |
| 038-0006 | I-57 SOUTHBOUND | | RAILROAD | 40 | 4 | | 174 | 7,656 | 701406 * |
| 038-0007 | I-57 NORTHBOUND | 8.6 MILES SOUTH OF ASHKUM INTERCHANGE | WEST SECOND | 40 | 4 | | 106.7 | 4,695 | 701406 * |
| 038-0008 | I-57 SOUTHBOUND | | STREET | 40 | 4 | | 106.7 | 4,695 | 701406 * |
| 038-0009 | I-57 NORTHBOUND | 6.2 MILES SOUTH OF ILL 116 | PRAIRIE | 40 | 1 | | 112.3 | 4,604 | 701406 * |
| 038-0010 | I-57 SOUTHBOUND | | CREEK | 40 | 1 | | 112.3 | 4,604 | 701406 * |
| 038-0011 | I-57 NORTHBOUND | 4.1 MILES SOUTH OF ILL 116 | PRAIRIE | 40 | 1 | | 23.3 | 955 | 701406 * |
| 038-0012 | I-57 SOUTHBOUND | | CREEK | 40 | 1 | | 23.3 | 955 | 701406 * |
| 038-0151 | I-57 SOUTHBOUND | 7.3 MILES SOUTH OF ONARGA INTERCHANGE | SPRING | 40 | 1 | | 93.5 | 3,834 | 701406 * |
| 038-0152 | I-57 NORTHBOUND | | CREEK | 40 | 1 | | 93.5 | 3,834 | 701406 * |
| 038-0153 | I-57 SOUTHBOUND | 3.1 MILES SOUTH OF ONARGA INTERCHANGE | BRANCH OF | 40 | 1 | | 101 | 4,141 | 701406 * |
| 038-0154 | I-57 NORTHBOUND | | SPRING CREEK | 40 | 1 | | 101 | 4,141 | 701406 * |
| 038-0155 | I-57 SOUTHBOUND | 2.4 MILES SOUTH OF ONARGA INTERCHANGE | SPRING | 40 | 1 | | 127.5 | 5,228 | 701406 * |
| 038-0156 | I-57 NORTHBOUND | | CREEK | 40 | 1 | | 127.5 | 5,228 | 701406 * |
| 038-0158 | I-57 SOUTHBOUND | 5.1 MILES SOUTH OF ILL 116 | DRAINAGE | 40 | 1 | | 22 | 902 | 701406 * |
| 038-0159 | I-57 NORTHBOUND | | DITCH | 40 | 1 | | 22 | 902 | 701406 * |
| 038-0167 | I-57 SOUTHBOUND | 7.2 MILES SOUTH OF ASHKUM INTERCHANGE | STREAM | 40 | 1 | | 20.8 | 853 | 701406 * |
| 038-0168 | I-57 NORTHBOUND | | | 40 | 1 | | 20.8 | 853 | 701406 * |
| NON-INTERSTATE | | | | | | | | | |
| 038-0019 | ILL 1 | 2.2 MI N OF US 52 | N MARTINTON DT NO 2 | 31.5 | 7.4 | | 106 | 4,123 | 701201 |
| 038-0025 | ILL 1 | S EDGE OF MILFORD | SUGAR CREEK | 36 | 7.4 | | 207.1 | 8,988 | 701201 |
| 038-0028 | ILL 1 | 0.2 MI S WELLINGTON | GAY CREEK | 37 | 1 | | 26.2 | 996 | 701201 * |
| 038-0031 | US 24 | GILMAN INTERCHANGE | I-57 | 49 | 7.4 | 18.5 | 222 | 16,628 | 701201 |
| 038-0032 | US 24 | 2.1 MI E OF US 45 | DRAINAGE DITCH | 40 | 7.4 | | 107.1 | 5,077 | 701201 |
| 038-0033 | US 24 | 3.1 MI E OF US 45 | DRAINAGE DITCH | 40 | 7.4 | | 186.2 | 8,826 | 701201 |
| 038-0034 | US 24 | 4.1 MI E OF US 45 | SPRING CREEK | 40 | 7.4 | | 207.8 | 9,850 | 701201 |
| 038-0037 | US 24 | 2.7 MI E OF ILL 1 | RAYMOND CREEK | 40 | 7.4 | | 100 | 4,740 | 701201 |
| 038-0039 | US 45 | 2.4 MI N OF US 24 | PRAIRIE CREEK | 36 | 3 | | 47.7 | 1,860 | 701201 |
| 038-0077 | FAS 335/CH 10 | 6.5 MI S BUCKLEY INT | I-57 | 30.5 | 5 | | 184 | 6,532 | 701201 |
| 038-0082 | FAS 337/CH 47 | 2.6 MI S ONARGA INT | I-57 | 26.5 | 5 | | 225.3 | 7,097 | 701201 |
| 038-0086 | TR 155 | 7.8 MI S ASHKUM INT | I-57 | 26 | 1.6 | | 238.3 | 6,577 | 701201 |
| 038-0103 | US 52 | 1.7 MI E OF ILL 49 | IROQUOIS RIVER | 32 | 7.4 | | 409.9 | 16,150 | 701201 |
| 038-0118 | ILL 49 | 2.5 MI N OF US 24 | SPRING CREEK | 32 | 7.4 | | 284.5 | 11,209 | 701201 |
| 038-0123 | ILL 116 | ASHKUM INTERCHANGE | I 57 | 32.5 | 4.8 | | 264.8 | 9,877 | 701201 * |
| 038-0125 | TR 89 | 2.5 MI S ASHKUM INT | I 57 | 26.5 | 5 | | 220.5 | 6,946 | 701201 |
| 038-0126 | TR 26A | 7.1 MI S ONARGA INT | I-57 | 26.5 | 5 | | 329.4 | 10,376 | 701201 |
| 038-0127 | TR 35 | 4.3 MI S CHEBANSE INT | I 57 | 24 | 1.6 | | 198.4 | 5,079 | 701201 |
| 038-0128 | TR 49A | 1.6 MI S CLIFTON INT | I 57 | 24 | 1.6 | | 256.2 | 6,559 | 701201 |
| 038-0129 | TR 58A | 1.2 MI S GILMAN INT | I 57 | 24 | 5 | | 343.6 | 9,964 | 701201 |

* STRUCTURE HAS EXISTING PCC OVERLAY. ADDITIONAL DRYING TIME MAY BE REQUIRED.

| | | | | | | | | | | | | | |
|--|----------------------|------------|-----------|---|---|-------------------------|------|-----------|---------|--------|--------------|-----------|----|
| FILE NAME = | USER NAME = verdneml | DESIGNED - | REVISED - | STATE OF ILLINOIS DEPARTMENT OF TRANSPORTATION | SEALING SCHEDULE | | | F.A. RTE. | SECTION | COUNTY | TOTAL SHEETS | SHEET NO. | |
| ct:\pw-work\p\idot\verdneml\0386841-sheets.dgn | | DRAWN - | REVISED - | | SCALE: | SHEET NO. 2 OF 4 SHEETS | STA. | TO STA. | VAR | | VARIOUS | 4 | 11 |
| PLOT SCALE = 50.0000' / in. | | CHECKED - | REVISED - | | *D3 BRIDGE DECK SEALING 2012 CONTRACT NO. 66B41 | | | | | | | | |
| PLOT DATE = 8/1/2011 | | DATE - | REVISED - | | [ILLINOIS] FED. AID PROJECT | | | | | | | | |

CONCRETE SEALER

| STRUCTURE NUMBER | FACILITY CARRIED | APPROXIMATE LOCATION | FEATURE CROSSED | DECK WIDTH FEET | PARAPET SURFACE FEET | MEDIAN SURFACE FEET | DECK LENGTH FEET | SEAL AREA SQ FT | TRAFFIC CONTROL AND PROTECTION STANDARD |
|------------------|--------------------|-----------------------|----------------------|-----------------|----------------------|---------------------|------------------|-----------------|---|
| 038-0130 | TR 95 | 3.5 MI S OF ILL 116 | I 57 | 26.5 | 5 | | 263.3 | 8,294 | 701201 |
| 038-0131 | TR 109 | 5.6 MI S ASHKUM INT | I 57 | 26.5 | 5 | | 222.8 | 7,018 | 701201 |
| 038-0132 | TR 269 | 4.7 MI S ONARGA INT | I-57 | 26.5 | 5 | | 181.8 | 5,727 | 701201 |
| 038-0133 | TR 327 | 1.1 MI S BUCKLEY INT | I-57 | 26.5 | 5 | | 180.6 | 5,689 | 701201 |
| 038-0134 | TR 349 | 4.1 MI S BUCKLEY INT | I-57 | 26.5 | 5 | | 242.8 | 7,648 | 701201 |
| 038-0142 | US 52 | 5.5 MI E OF ILL 49 | DRAINAGE DITCH | 32 | 1.6 | | 15.8 | 531 | 701201 |
| 038-0164 | ILL 1 | 1.2 MI N OF MILFORD | UNKNOWN STREAM | 37 | 1.2 | | 22.5 | 860 | 701201 * |
| 038-0174 | ILL 49 | 4.4 MI N ILL 9 | PIGEON CREEK | 33 | | | 93.5 | 3,086 | 701201 |
| 038-0179 | US 24 | W EDGE OF WATSEKA | SUGAR CREEK | 30 | 7.4 | | 378.8 | 14,167 | 701501 |
| 038-0182 | US 52 | 3.3 MI N OF US 24 | IROQUOIS RIVER | 32 | 7.4 | | 218 | 8,589 | 701501 |
| 038-0185 | FAS 1324/OLD US 45 | 2.3 MI S OF CHEBANSE | LANGAN CREEK | 32 | | | 128.2 | 4,102 | 701201 |
| 038-0186 | US 24 | 4.5 MI W OF I-57 | PRAIRIE CREEK | 40 | 7.4 | | 101.3 | 4,802 | 701201 |
| 038-0187 | US 24 | 3.7 MI W OF I-57 | TRIB PRAIRIE CREEK | 40 | 7.4 | | 65 | 3,081 | 701201 |
| 038-0190 | ILL 49 | 2.4 MI N OF ILL 9 | BR PIGEON CREEK | 40 | 7.4 | | 68 | 3,223 | 701201 |
| 038-0191 | ILL 49 | 3.4 MI S OF US 24 | TRIB OF SHAVEYAIL CR | 40 | 7.4 | | 42 | 1,991 | 701201 |
| 038-0197 | ILL 1 | 2.7 MI S OF US 24 | SUGAR CREEK | 36 | 7.4 | | 60 | 2,604 | 701201 |
| 038-0198 | ILL 49 | 12.6 MI S US 24 | LITTLE MUD CREEK | 32 | 7.4 | | 140 | 5,516 | 701201 |
| 038-0201 | ILL 1 | 0.7 MI N OF CH 10 | SUGAR CREEK TRIB | 36 | 7.4 | | 108.8 | 4,722 | 701201 |
| 038-0206 | ILL 1 | 0.8 MI N PAPINEAU RD | BIG BEAVER CREEK | 31.5 | 7.4 | | 129.6 | 5,041 | 701201 |
| 038-0207 | ILL 54 | 7.6 MI N OF ILL 115 | SPRING CREEK | 31.5 | 7.4 | | 131.9 | 5,131 | 701201 |
| 038-0210 | US 45 | 0.3 MI S DEL REY RD | SPRING CREEK | 32 | 7.4 | | 99.7 | 3,928 | 701201 |
| 038-0211 | US 45 | 0.4 MI S OF US 24 | DRAINAGE DITCH | 36 | 7.4 | | 89 | 3,863 | 701201 |
| 038-0212 | US 45 | 1.7 MI N OF BUCKLEY | LOUIS CREEK | 32 | 7.6 | | 102 | 4,039 | 701201 |
| 038-0213 | ILL 54 | 1.1 MI N OF THAWVILLE | SPRING CREEK | 32 | 7.6 | | 91 | 3,604 | 701201 |
| 038-0214 | US 45/FAS 338 | 10.6 MI S OF ILL 54 | SPRING CREEK | 32 | 7.6 | | 95 | 3,762 | 701201 |
| 038-0217 | ILL 49 | 16.1 MI S OF US 24 | PIGEON CREEK | 32 | 7.6 | | 138 | 5,465 | 701201 |

IROQUOIS COUNTY SUB-TOTAL

377,056

KANKAKEE COUNTY INTERSTATE

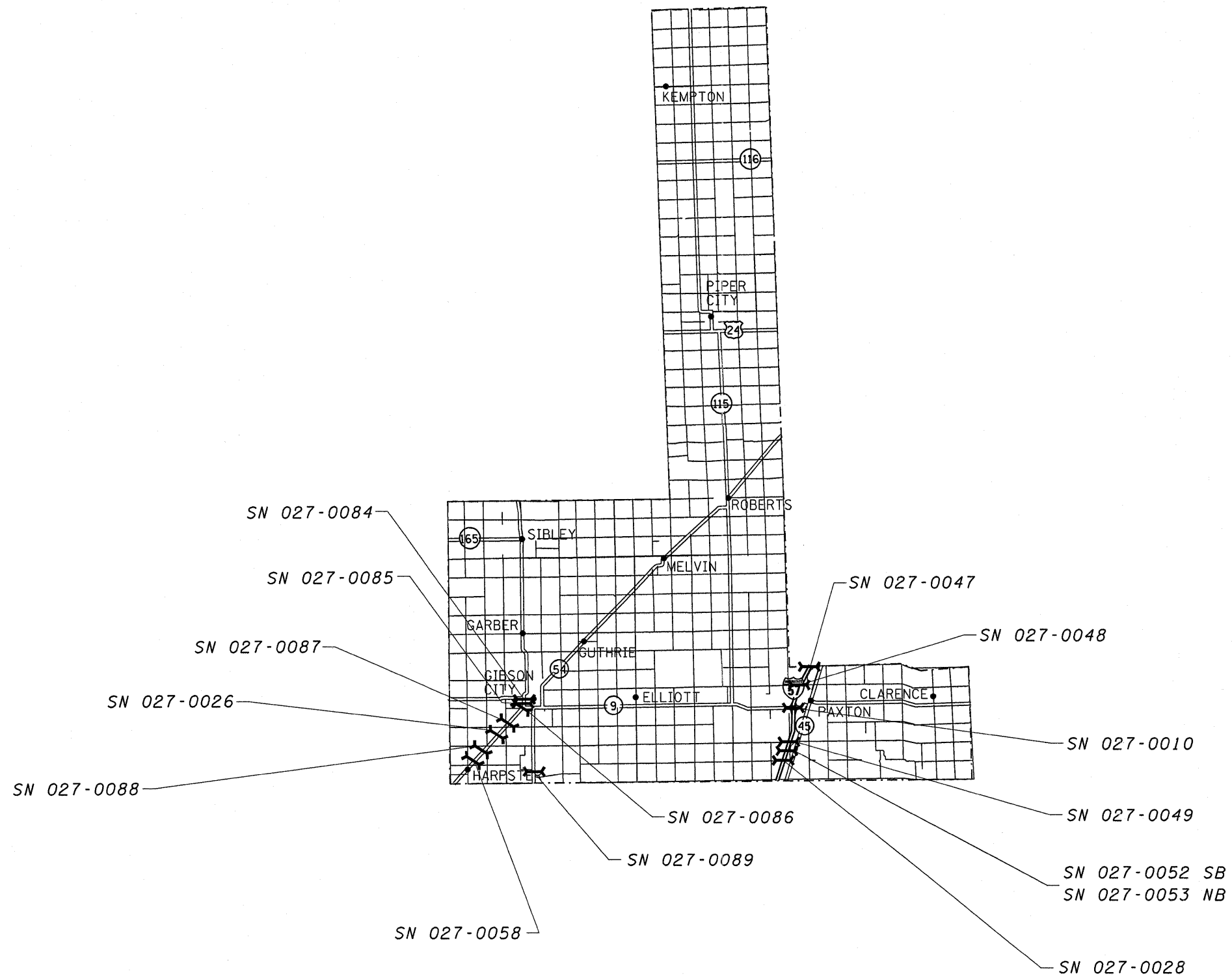
| | | | | | | | | | |
|----------|-----------------|-------------------------------|----------------|----|-----|-----|-------|--------|----------------|
| 046-0001 | I-57 NORTHBOUND | 4.3 MI N CHEBANSE INT | MINNIE CREEK | 42 | 1 | | 70.2 | 3,019 | 701406 * |
| 046-0003 | I-57 NORTHBOUND | 2.8 MILES NORTH OF US 45 & 52 | KANKAKEE RIVER | 40 | 7.4 | | 864.6 | 40,982 | 701406 |
| 046-0004 | I-57 SOUTHBOUND | | | | 40 | 7.4 | | 864.6 | 40,982 |
| 046-0006 | I-57 NORTHBOUND | ILL 17 | ILL 17 | 48 | 7.4 | | 166.1 | 9,202 | 701406, 701411 |
| 046-0007 | I-57 SOUTHBOUND | INTERCHANGE | | 48 | 7.4 | | 166.1 | 9,202 | 701406, 701411 |
| 046-0008 | I-57 NORTHBOUND | 0.9 MILE NORTH | CON-RAIL | 40 | 7.4 | | 259.7 | 12,310 | 701406 |
| 046-0009 | I-57 SOUTHBOUND | OF ILL 17 | CORP | 40 | 7.4 | | 259.7 | 12,310 | 701406 |
| 046-0010 | I-57 NORTHBOUND | 1.0 MILE NORTH | GRINNELL ROAD | 40 | 7.4 | | 120.2 | 5,697 | 701406 |
| 046-0011 | I-57 SOUTHBOUND | OF ILL 17 | FAU 6221 | 40 | 7.4 | | 120.2 | 5,697 | 701406 |
| 046-0013 | I-57 NORTHBOUND | 1.8 MI N OF ILL 17 | SOLDIER CREEK | 40 | 7.4 | | 76.6 | 3,631 | 701406 |
| 046-0114 | I-57 SOUTHBOUND | 4.3 MI N CHEBANSE INT | MINNIE CREEK | 40 | 7.4 | | 69.2 | 3,280 | 701406 |

* STRUCTURE HAS EXISTING PCC OVERLAY. ADDITIONAL DRYING TIME MAY BE REQUIRED.

CONCRETE SEALER

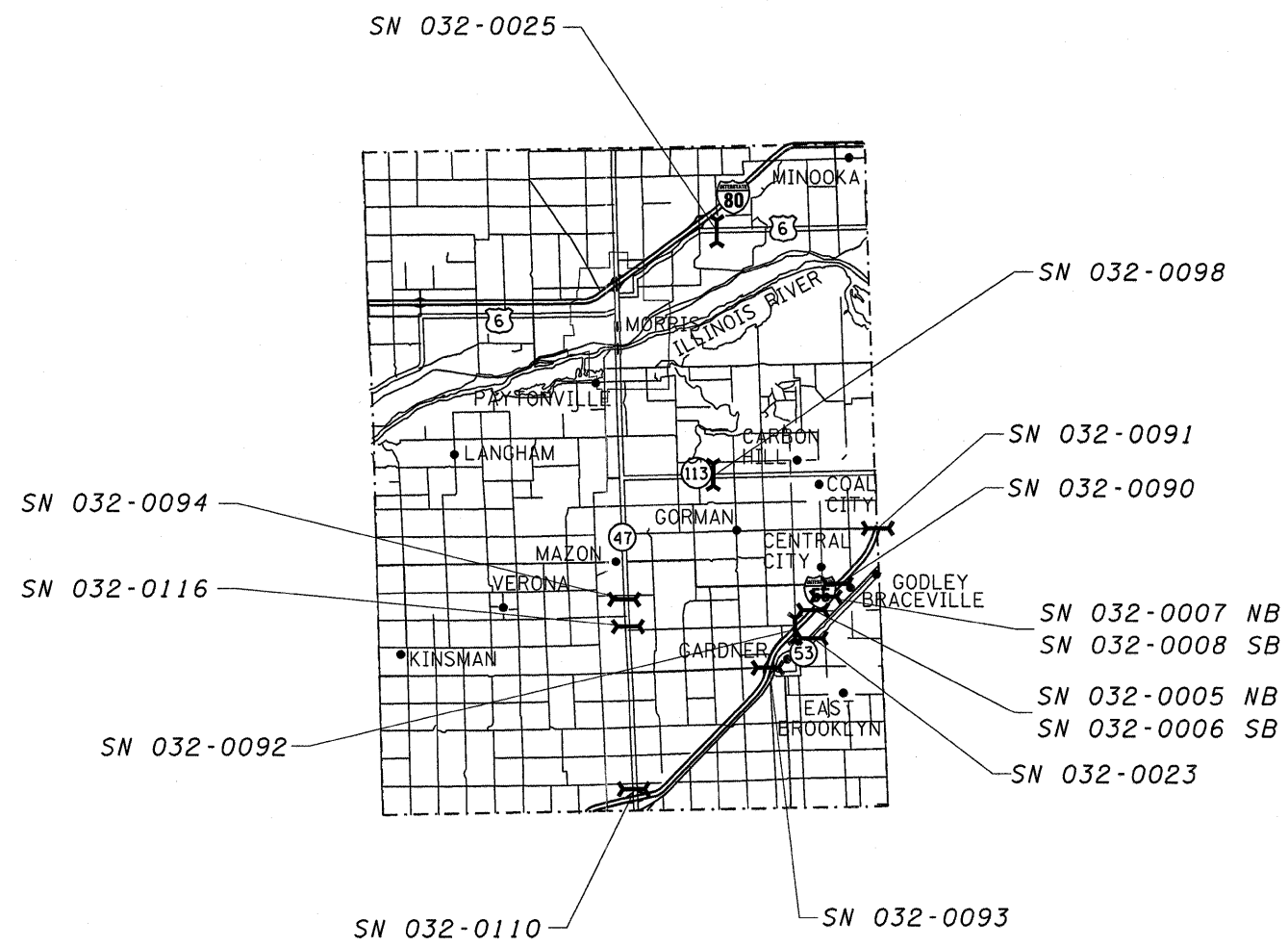
| STRUCTURE NUMBER | FACILITY CARRIED | APPROXIMATE LOCATION | FEATURE CROSSED | DECK WIDTH FEET | PARAPET SURFACE FEET | MEDIAN SURFACE FEET | DECK LENGTH FEET | SEAL AREA SQ FT | TRAFFIC CONTROL AND PROTECTION STANDARD |
|---------------------------|---------------------|-----------------------------|--------------------|-----------------|----------------------|---------------------|------------------|-----------------|---|
| NON-INTERSTATE | | | | | | | | | |
| 046-0023 | ILL 1 & 17 | MOMENCE | KKK RIVER S BRANCH | 52 | 1 | | 288.3 | 15,280 | 701201 |
| 046-0027 | ILL 17 | 0.9 MI E OF REDDICK | REDDICK RUN CREEK | 32 | 7.4 | | 115.1 | 4,535 | 701201 |
| 046-0034 | ILL 17 | 100 FT W US OF 45 & 52 | KKK RIVER & PK RD | 88.3 | 6 | 6.9 | 631.9 | 63,948 | 701201 |
| 046-0045 | ILL 50 | 1 MI N JT US 45 & 52 | KANKAKEE RIVER | 61.2 | 6.2 | | 595.4 | 39,763 | 701201 |
| 046-0070 | US 52 & 45 | 1.2 MI S OF I-57 | MINNIE CREEK | 40 | | | 103.8 | 4,152 | 701201 * |
| 046-0080 | WALDRON RD/FAU 6184 | 3.4 MI N US 45 & ILL 54 | I-57 | 26 | 1.4 | | 234.5 | 6,425 | 701201 |
| 046-0083 | STEGER RD | 3.2 MI N MANTENO INT | I-57 | 24 | 1.8 | | 243.5 | 6,282 | 701201 |
| 046-0084 | LAKE MANTENO RD | 1.1 MI N MANTENO RD | I-57 | 24 | 1.8 | | 243.5 | 6,282 | 701201 |
| 046-0085 | 700ON RD/MS 1025 | 4.2 MI N ILL 50 | I-57 | 24 | 1.8 | | 241.1 | 6,220 | 701201 |
| 046-0089 | FAU 6223/OTTO RD | 3.4 MI N CHEBANSE INT | I-57 & I C G RR | 26.5 | 6.6 | | 432.8 | 14,326 | 701201 |
| 046-0111 | ILL 1 & 17 | MOMENCE | KANKAKEE RIVER | 52 | 1 | | 241 | 12,773 | 701501 |
| 046-0112 | ILL 115,US 45 & 52 | 0.6 MI S OF ILL 17 | KANKAKEE RIVER | 46 | 7.4 | | 561 | 29,957 | 701606 |
| 046-0113 | FAU 6189/RIVER RD | 2.3 MI N OF US 45 & 52 | I-57 | 28 | 7.4 | | 218 | 7,717 | 701201 |
| 046-0115 | ILL 1 | 4.4 MI S OF ILL 17 | DITCH | 36 | 7.4 | | 34 | 1,476 | 701201 |
| 046-0116 | ILL 1 | 4.0 MI S OF ILL 17 | DITCH | 36 | 7.4 | | 39 | 1,693 | 701201 |
| 046-0117 | ILL 1 | 2.6 MI S OF ILL 17 | SPRING CREEK | 36 | 7.4 | | 80 | 3,472 | 701201 |
| 046-0118 | ILL 1 | 0.8 MI S OF ILL 17 | DITCH | 36 | 7.4 | | 43 | 1,866 | 701201 |
| 046-0119 | US 45 & 52 | 1.0 MI N OF I-57 | GARR CREEK | 63 | 7.4 | | 88 | 6,195 | 701606 |
| 046-0121 | US 45 & 52 | 50 FT N COURT ST IN KKK | SOLDIERS CREEK | 91.5 | 1.6 | 0.5 | 107.3 | 10,194 | 701601 |
| 046-0122 | ILL 50 | S EDGE OF MANTENO | S BR ROCK CREEK | 51.2 | 1.6 | | 131.2 | 6,927 | 701606 |
| 046-0125 | ILL 50 | N LIMITS KANKAKEE | SOLDIER CREEK | 65.6 | 1.6 | | 90 | 6,048 | 701602 |
| 046-0126 | ARMOUR RD/FAU 6176 | 3.2 MI N OF ILL 17 | I-57 | 53.8 | 6.2 | | 216.4 | 12,984 | 702606 |
| 046-0127 | ILL 17/FAS 310 | 2.1 MI SE OF JCT ILL 1 & 17 | PIKE CREEK | 36 | 7.4 | | 94 | 4,080 | 701201 |
| 046-0129 | ILL 17 | 5.0 MI SE OF JCT ILL 1 & 17 | BULL CREEK | 36 | 7.4 | | 86.5 | 3,754 | 701201 |
| 046-0130 | ILL 17 | 1.5 MI E OF REDDICK | MAZON RIVER | 32 | 7.4 | | 90.2 | 3,554 | 701201 |
| 046-0131 | ILL 114 | 1.7 MI E OF ILL 1 & 17 | PIKE CREEK | 40 | 7.4 | | 64 | 3,034 | 701201 |
| 046-0132 | ILL 17 | 2.0 MI E OF REDDICK | CRANE CREEK | 36 | 7.4 | | 130 | 5,642 | 701201 |
| 046-0133 | ILL 115 | 15.1 MI W OF US 45 | HORSE CREEK | 35.4 | 7.4 | | 98.4 | 4,212 | 701501 |
| 046-0134 | ILL 102 | 2.2 MI NW OF US 45 | DAVIS CREEK | 40 | 1 | | 41.3 | 1,693 | 701201 * |
| 046-0137 | ILL 113 | 4.7 MI N OF ILL 17 | WILEY CREEK | 32 | 7.6 | | 91.5 | 3,623 | 701201 |
| KANKAKEE COUNTY SUB-TOTAL | | | | | | | | 444,420 | |
| TOTAL | | | | | | | | 1,041,229 | |

* STRUCTURE HAS EXISTING PCC OVERLAY. ADDITIONAL DRYING TIME MAY BE REQUIRED.



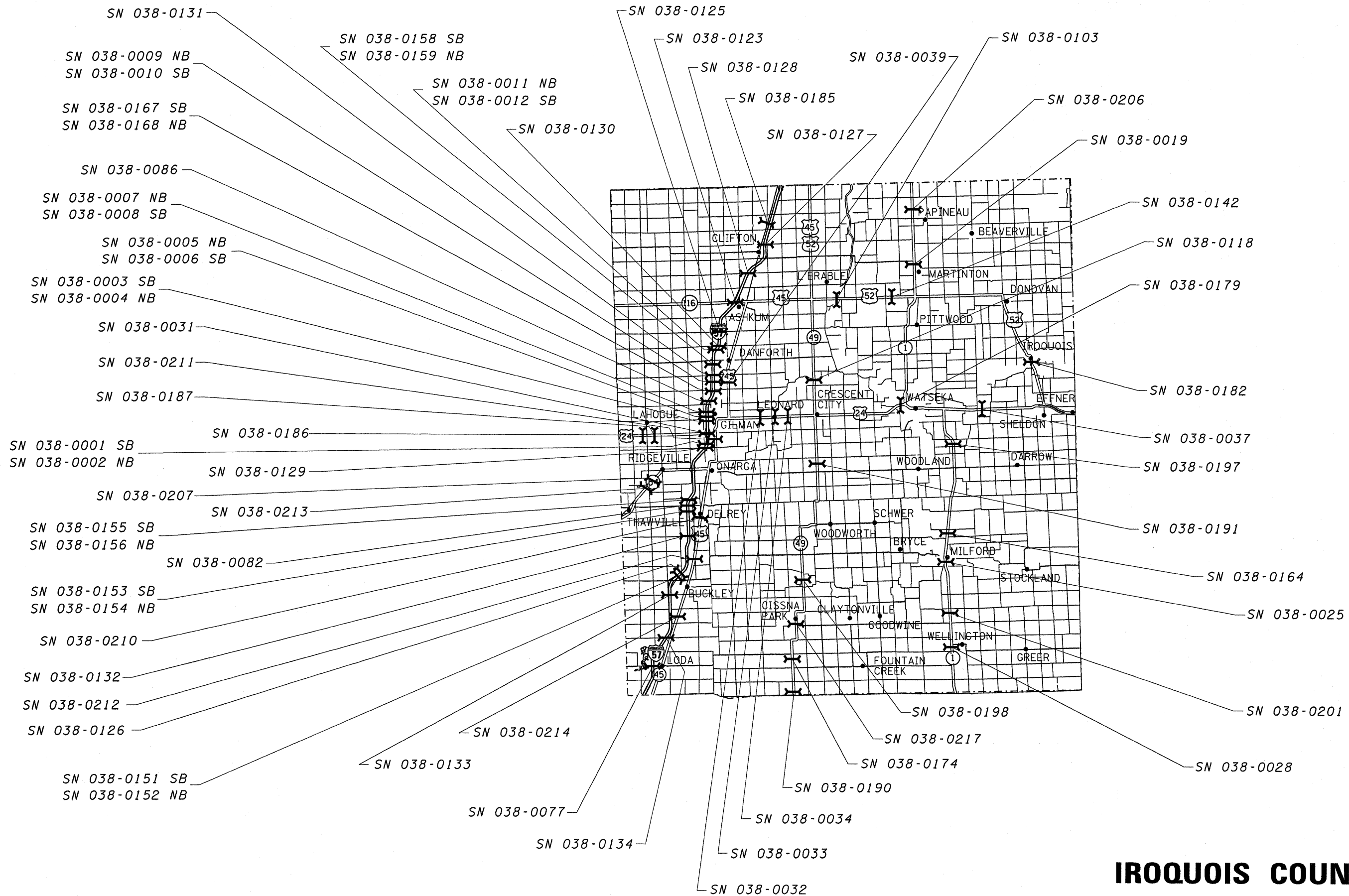
FORD COUNTY

| | | | | | | | | | | | | | |
|--|-----------------------|------------|-----------|---|-------------------------------------|-----------|----|--------------------|---------|---------------------------|-----------------|--------------|----|
| FILE NAME = | USER NAME = verdinemi | DESIGNED - | REVISED - | STATE OF ILLINOIS DEPARTMENT OF TRANSPORTATION | FORD COUNTY LOCATION MAP | | | F.A. RTE. | SECTION | COUNTY | TOTAL SHEETS | SHEET NO. | |
| ct:\pw_work\pwsdot\verdineml\08266891\0366B41-sheets.dgn | | DRAWN - | REVISED - | | SCALE: | SHEET NO. | OF | SHEETS | STA. | TO STA. | VARIOUS | 7 | 11 |
| PLOT SCALE = 50.0000' / in. | | CHECKED - | REVISED - | | *D3 BRIDGE DECK SEALING 2012 | | | CONTRACT NO. 66B41 | | ILLINOIS FED. AID PROJECT | | | |
| PLOT DATE = 8/1/2011 | | DATE - | REVISED - | | | | | | | | | | |



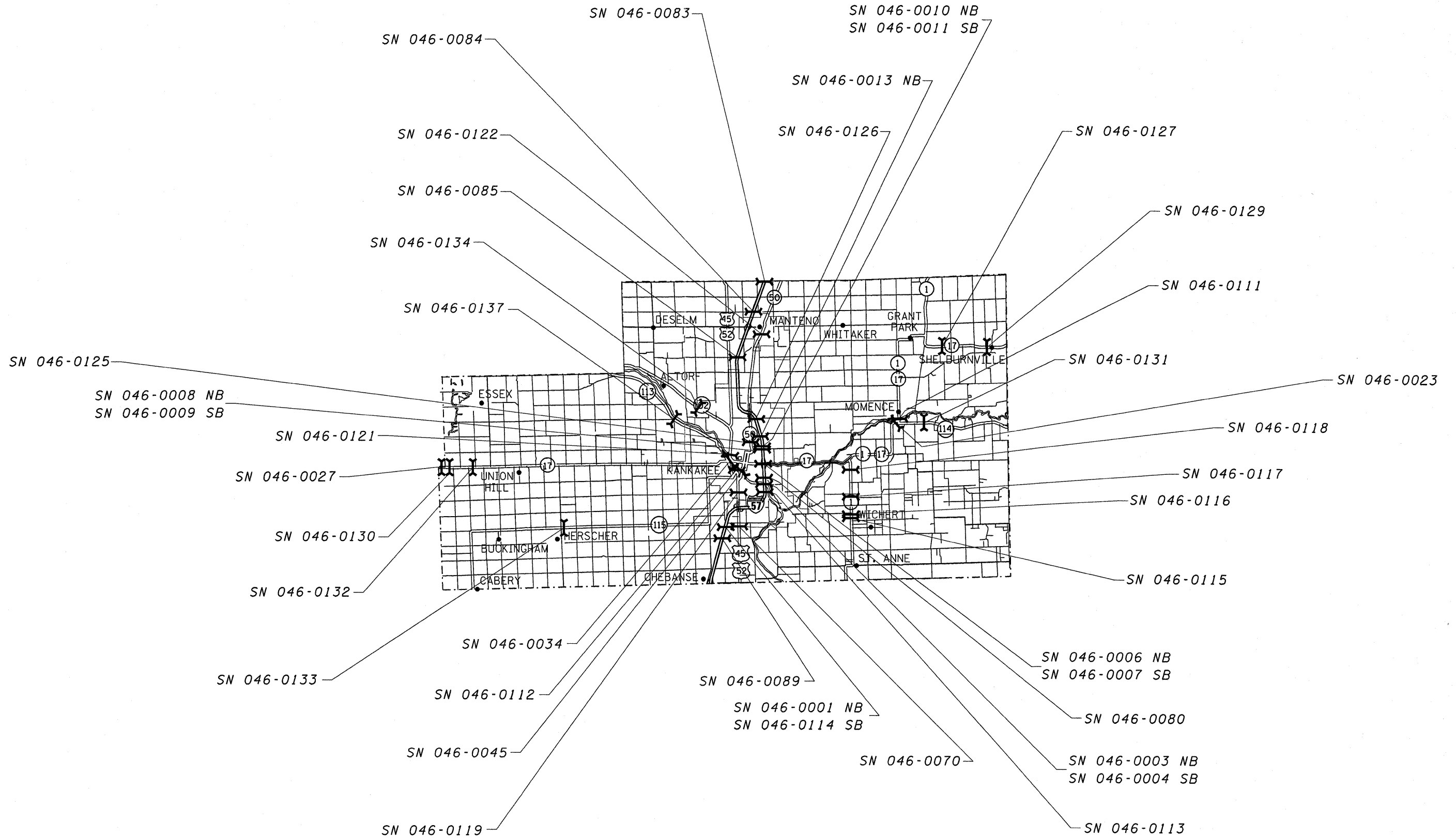
GRUNDY COUNTY

| | | | | | | | | | | | | | |
|---|-----------------------|------------|-----------|---|---------------------------------------|-----------|----|--------|------------------------------|---------|--------------------|-----------------|--------------|
| FILE NAME = | USER NAME = verdinemi | DESIGNED - | REVISED - | STATE OF ILLINOIS DEPARTMENT OF TRANSPORTATION | GRUNDY COUNTY LOCATION MAP | | | | F.A. RTE. | SECTION | COUNTY | TOTAL SHEETS | SHEET NO. |
| ci:\pw_work\pwrtdot\verdinem\1\0366B41-sheets.dgn | | DRAWN - | REVISED - | | SCALE: | SHEET NO. | OF | SHEETS | STA. | TO STA. | VARIOUS | 8 | 11 |
| PLOT SCALE = 50.0000' / in. | | CHECKED - | REVISED - | | | | | | *D3 BRIDGE DECK SEALING 2012 | | CONTRACT NO. 66B41 | | |
| PLOT DATE = 8/1/2011 | | DATE - | REVISED - | | | | | | ILLINOIS FED. AID PROJECT | | | | |



IROQUOIS COUNTY

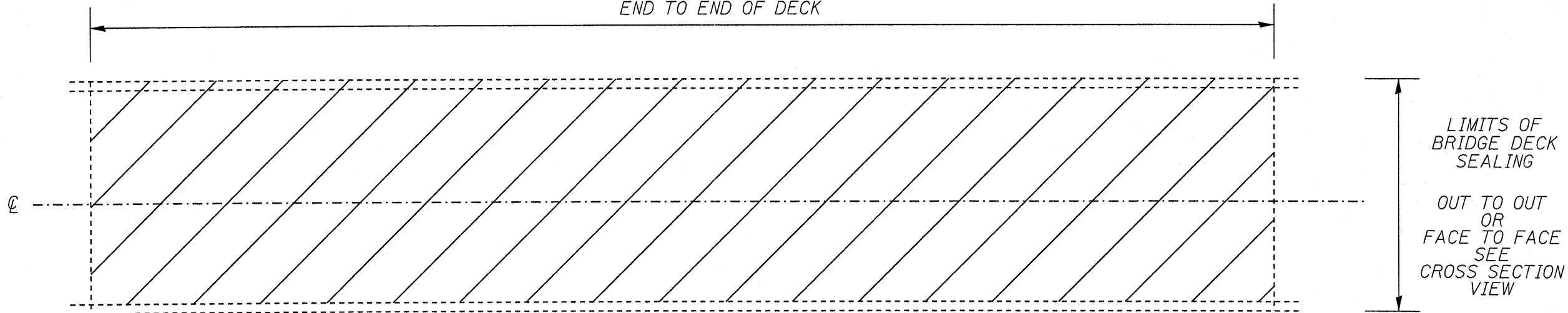
| | | | | | | | | | | | | | | |
|---|----------------------|------------|-----------|---|---|-----------|----|--------|--------------|---------|--------------------|-----------------|---------------------------|----|
| FILE NAME = c:\p\work\p\rdot\verdinem\0386B41-sheets.dgn | USER NAME = verdinem | DESIGNED - | REVISED - | STATE OF ILLINOIS DEPARTMENT OF TRANSPORTATION | IROQUOIS COUNTY LOCATION MAP | | | | F.A. RTE. | SECTION | COUNTY | TOTAL SHEETS | SHEET NO. | |
| PLOT SCALE = 50,000' / in. | PLOT DATE = 8/1/2011 | DRAWN - | REVISED - | | SCALE: | SHEET NO. | OF | SHEETS | STA. | TO STA. | VAR | VARIOUS | 9 | 11 |
| | | CHECKED - | REVISED - | | | | | | | | | | | |
| | | DATE - | REVISED - | | | | | | | | | | | |
| #03 BRIDGE DECK SEALING 2012 | | | | | | | | | | | CONTRACT NO. 66B41 | | ILLINOIS FED. AID PROJECT | |



KANKAKEE COUNTY

| | | | | | | | | | | | | | | |
|--|-----------------------|------------|-----------|---|---|-----------|----|--------|--------------|---------|------------------------------|--------------------|--------------|----|
| FILE NAME = | USER NAME = verdinemi | DESIGNED - | REVISED - | STATE OF ILLINOIS DEPARTMENT OF TRANSPORTATION | KANKAKEE COUNTY LOCATION MAP | | | | F.A. RTE. | SECTION | COUNTY | TOTAL SHEETS | SHEET NO. | |
| ct:\pw_work\pwsdot\verdinem\0266091\0366841-sheets.dgn | | DRAWN - | REVISED - | | SCALE: | SHEET NO. | OF | SHEETS | STA. | TO STA. | VAR | VARIOUS | 10 | 11 |
| | | CHECKED - | REVISED - | | | | | | | | #03 BRIDGE DECK SEALING 2012 | CONTRACT NO. 66B41 | | |
| | | DATE - | REVISED - | | | | | | | | ILLINOIS FED. AID PROJECT | | | |

LIMITS OF BRIDGE DECK SEALING
END TO END OF DECK

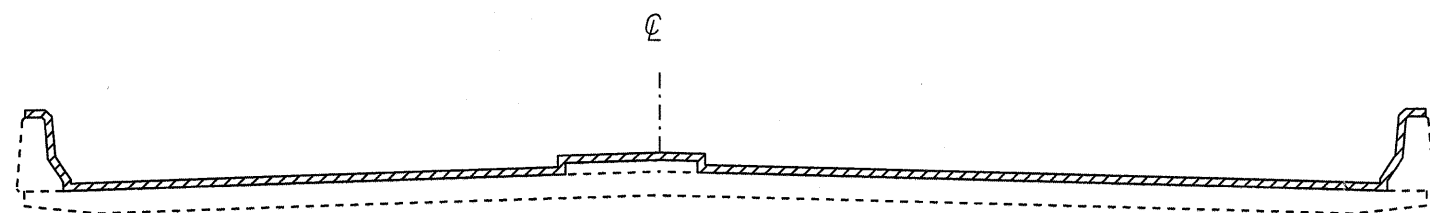


PLAN VIEW

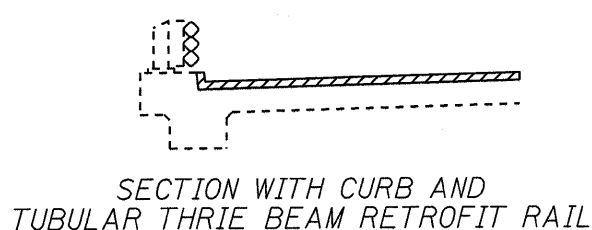
NOTE: BRIDGE APPROACH PAVEMENT SHALL NOT BE SEALED

EXISTING PAVEMENT MARKINGS SHALL BE TEMPORARILY COVERED, PRIOR TO APPLICATION OF THE DECK SURFACE TREATMENT, TO PREVENT THE MATERIAL FROM BEING APPLIED TO THE MARKINGS. THE TEMPORARY COVERING SHALL BE REMOVED AFTER THE APPLICATION OF THE DECK SURFACE TREATMENT AND PRIOR TO OPENING TO TRAFFIC. COST IS INCLUDED WITH CONCRETE SEALER.

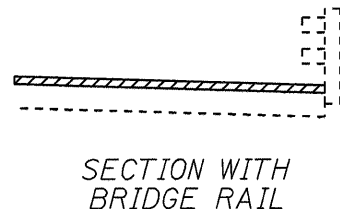
EXISTING EXPANSION JOINTS SHALL BE TEMPORARILY COVERED, PRIOR TO APPLICATION OF THE DECK SURFACE TREATMENT, TO PREVENT THE MATERIAL FROM BEING APPLIED TO THE JOINTS. THE TEMPORARY COVERING SHALL BE REMOVED AFTER THE APPLICATION OF THE DECK SURFACE TREATMENT AND PRIOR TO OPENING TO TRAFFIC. COST IS INCLUDED WITH CONCRETE SEALER.



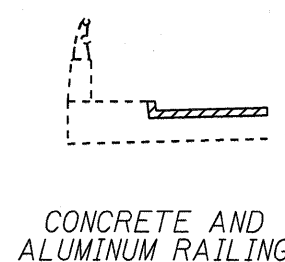
SECTION WITH
PARAPET AND MEDIAN



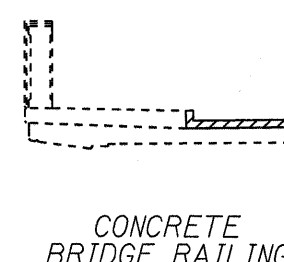
SECTION WITH CURB AND
TUBULAR THRIE BEAM RETROFIT RAIL



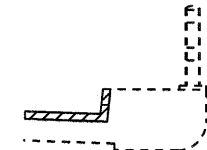
SECTION WITH
BRIDGE RAIL



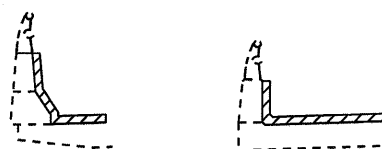
CONCRETE AND
ALUMINUM RAILING



CONCRETE
BRIDGE RAILING



BRIDGE RAIL



SECTION WITH CONCRETE
AND ALUMINUM RAILING

VARIOUS SECTIONS WITH SIDEWALK AND/OR CONCRETE CURB

AREA TO BE SEALED

NOT TO SCALE

| | | | | | | | | | | | | | |
|---|------------------------------|------------|-----------|---|---|-----------|----|--------|------------------------------|---------|--------------------|-----------------|--------------|
| FILE NAME = | USER NAME = verdnem1 | DESIGNED - | REVISED - | STATE OF ILLINOIS DEPARTMENT OF TRANSPORTATION | BRIDGE AND PARAPET SEALING DETAILS | | | | F.A. RTE. | SECTION | COUNTY | TOTAL SHEETS | SHEET NO. |
| cd:\pwork\pwork\verdnem1\0266091\0366841-sheets.dgn | | DRAWN - | REVISED - | | SCALE: | SHEET NO. | OF | SHEETS | STA. | TO STA. | VARIOUS | 11 | 11 |
| | PLOT SCALE = 50.0000' / 1in. | CHECKED - | REVISED - | | | | | | *03 BRIDGE DECK SEALING 2012 | | CONTRACT NO. 66841 | | |
| | PLOT DATE = 8/1/2011 | DATE - | REVISED - | | | | | | ILLINOIS FED. AID PROJECT | | | | |