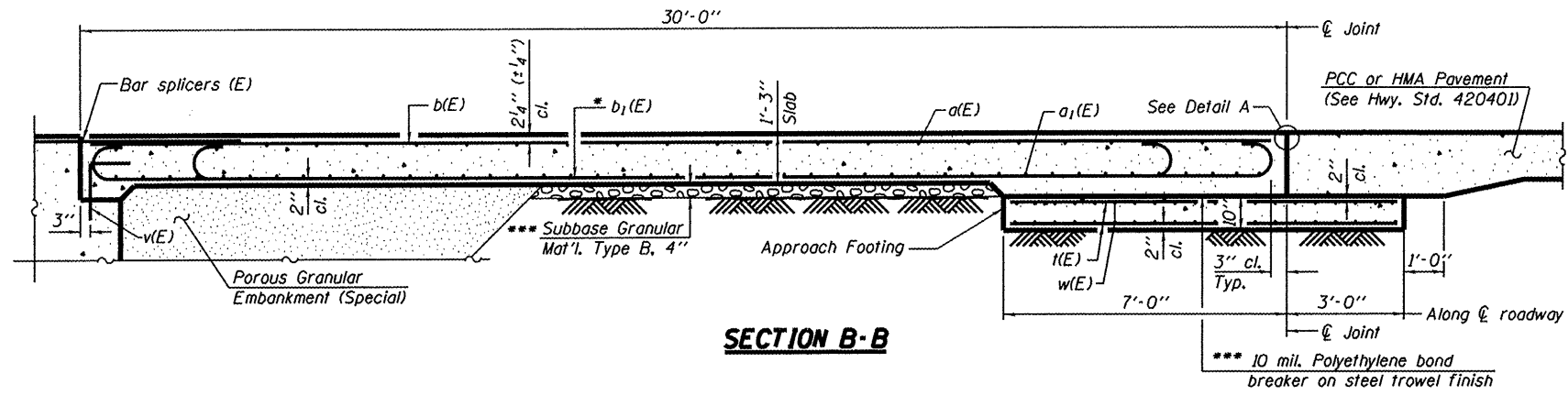
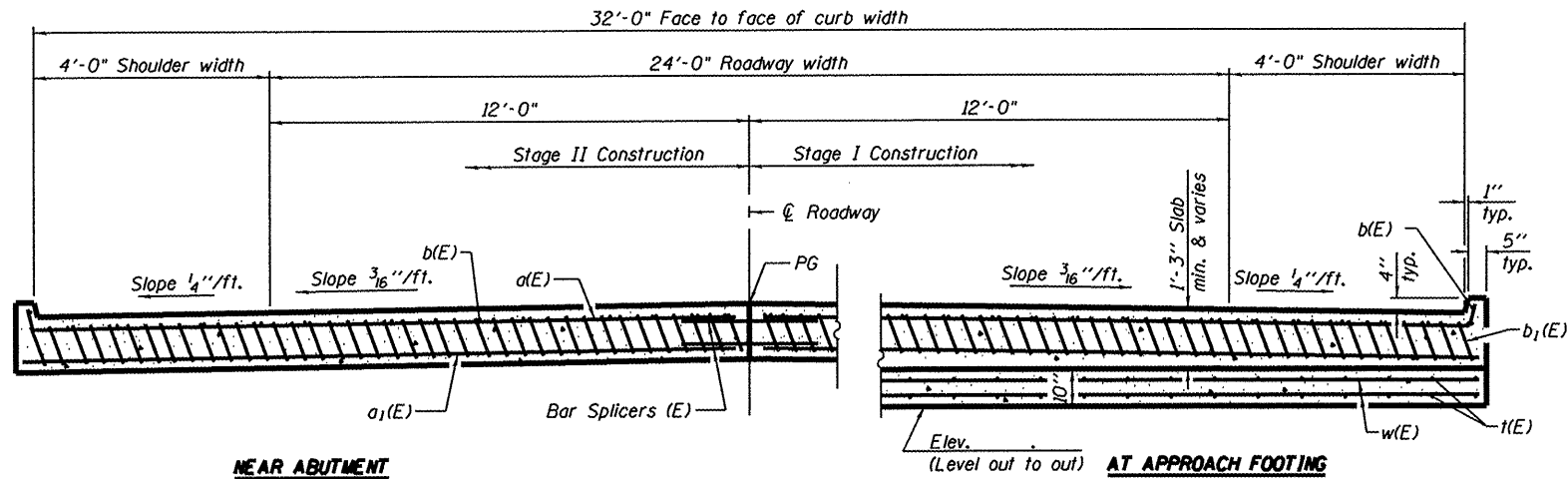


STATE OF ILLINOIS
DEPARTMENT OF TRANSPORTATION



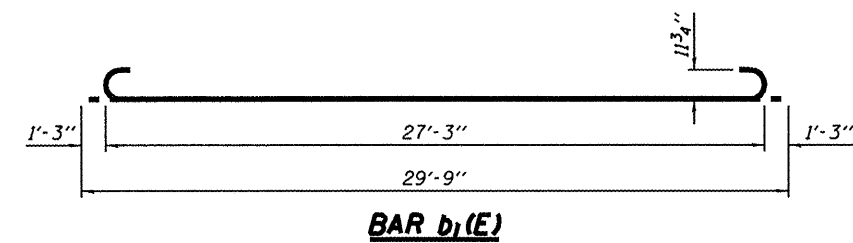
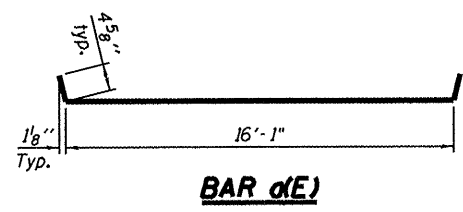
Notes:
See sheet 13 of 15 for Detail A.
Approach slab and parapet concrete shall be paid for as Concrete Superstructure.
Approach footing concrete shall be paid for as Concrete Structures.
Reinforcement shall be paid for as Reinforcement Bars, Epoxy Coated.
For v(E) bar details, see sheet 7 of 15.
The approach footing maximum applied service bearing pressure (Qmax) = 2.0 ksf.
For bar splicer details, see sheet 11 of 15.
Cost of excavation for approach footing included with Concrete Structures.
For Porous Granular Embankment (Special) and drainage treatment details, see sheet 2 of 15.



* Till #9 b1(E) bars as required to maintain clearance.
*** Cost included with Concrete Superstructure.

**TWO APPROACHES
BILL OF MATERIAL**

Bar	No.	Size	Length	Shape
a(E)	100	#4	16'-7"	—
a1(E)	184	#5	16'-2"	—
b(E)	56	#4	29'-8"	—
b1(E)	156	#9	29'-9"	—
i(E)	132	#4	9'-8"	—
w(E)	160	#5	16'-2"	—
Concrete Superstructure			Cu. Yd.	95.0
Concrete Structures			Cu. Yd.	20.9
Reinforcement Bars, Epoxy Coated			Pound	24,670



FILE NAME * #FILEL*	USER NAME * #USER*	DESIGNED -	REVISED -	STATE OF ILLINOIS DEPARTMENT OF TRANSPORTATION	BRIDGE APPROACH SLAB DETAILS IL 94 OVER DIXON CREEK S.N. 036-0054	F.A.P. RTE.	SECTION	COUNTY	TOTAL SHEETS	SHEET NO.
	PLOT SCALE * #SCALE*	DRAWN -	REVISED -			534	1096 (BR2)	HENDERSON	88	54
	DATE	CHECKED -	REVISED -			CONTRACT NO. 68083				
		DATE	REVISED -			ILLINOIS FED. AID PROJECT				