

PRE-STAGE I

1. MILL AND RESURFACE OUTSIDE SHOULDERS ON MAINLINE I-74 TO REMOVE RUMBLE STRIPS FROM STAGED TRAFFIC LANES WB STA. 338+70 TO STA. 388+05 AND EB STA. 335+00 TO STA. 373+68.
2. REMOVE TEMPORARY CONCRETE BARRIER ON EXISTING EAST OF STRUCTURES CROSS-OVER PRIOR TO OPENING.
3. MILL AND RESURFACE THE EXISTING CROSS-OVER EAST OF STRUCTURES.
4. CONSTRUCT TEMPORARY CROSS-OVER WEST OF STRUCTURES.

STAGE I

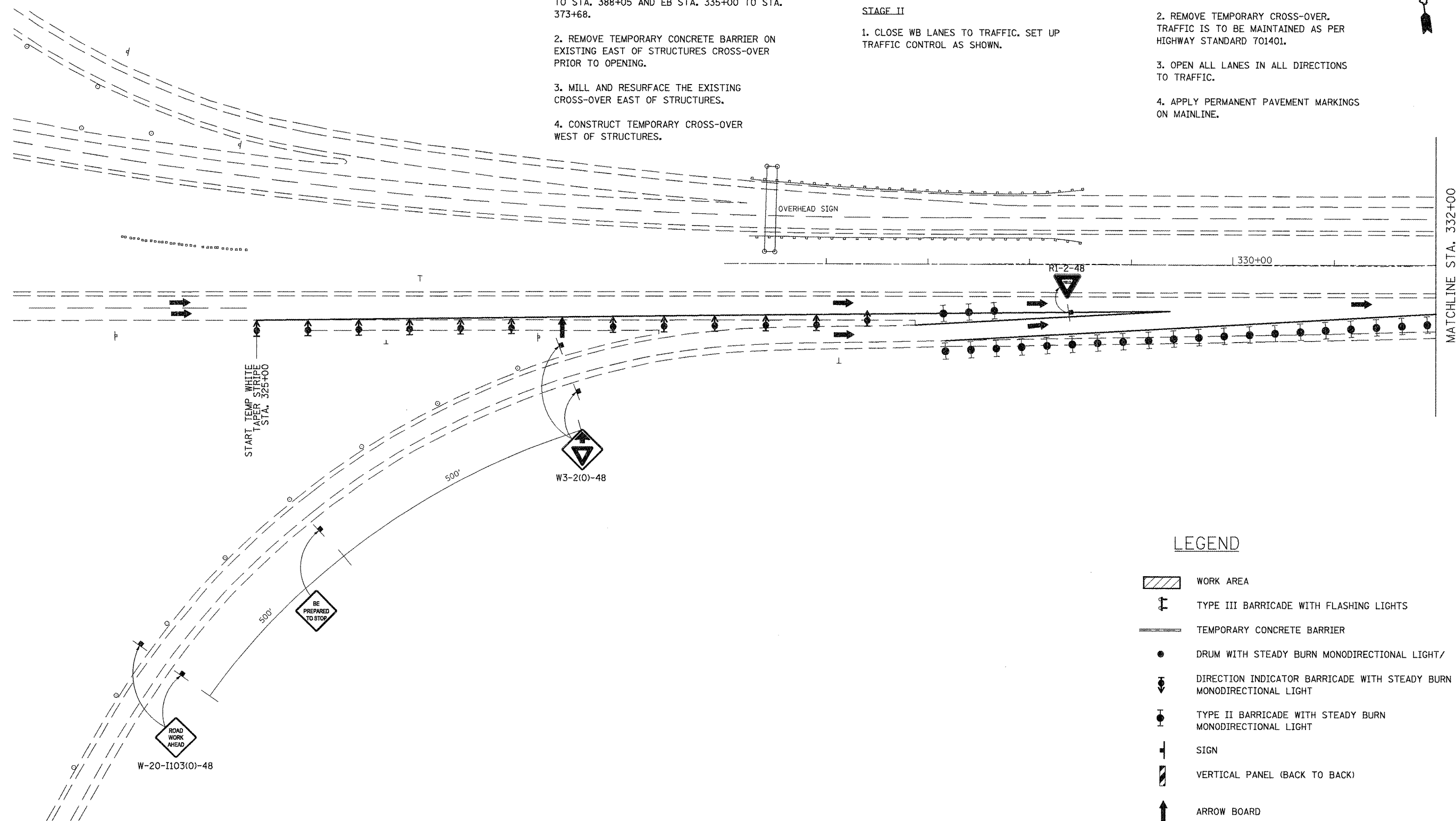
1. CLOSE EB LANES TO TRAFFIC. SET UP TRAFFIC CONTROL AS SHOWN.

STAGE II

1. CLOSE WB LANES TO TRAFFIC. SET UP TRAFFIC CONTROL AS SHOWN.

STAGE III

1. REINSTALL TEMPORARY CONCRETE BARRIER ON PERMANENT CROSS-OVER EAST OF STRUCTURES.
2. REMOVE TEMPORARY CROSS-OVER. TRAFFIC IS TO BE MAINTAINED AS PER HIGHWAY STANDARD 701401.
3. OPEN ALL LANES IN ALL DIRECTIONS TO TRAFFIC.
4. APPLY PERMANENT PAVEMENT MARKINGS ON MAINLINE.



LEGEND

- WORK AREA
- TYPE III BARRICADE WITH FLASHING LIGHTS
- TEMPORARY CONCRETE BARRIER
- DRUM WITH STEADY BURN MONODIRECTIONAL LIGHT/
- DIRECTION INDICATOR BARRICADE WITH STEADY BURN MONODIRECTIONAL LIGHT
- TYPE II BARRICADE WITH STEADY BURN MONODIRECTIONAL LIGHT
- SIGN
- VERTICAL PANEL (BACK TO BACK)
- ARROW BOARD
- IMPACT ATTENUATOR

FILE NAME = D468874-topo.dgn	USER NAME = johnsonv	DESIGNED -	REVISED -
		DRAWN -	REVISED -
		CHECKED -	REVISED -
		DATE -	REVISED -
	PLOT SCALE = 100.4566' / in.		
	PLOT DATE = 8/25/2011		

**STATE OF ILLINOIS
DEPARTMENT OF TRANSPORTATION**

**MAINTENANCE OF TRAFFIC PLAN
STAGE I**

SCALE: 1" = 50' SHEET NO. 1 OF 4 SHEETS STA. TO STA.

F.A.I. RTE.	SECTION	COUNTY	TOTAL SHEETS	SHEET NO.
74	72[GVB]BYJ	PEORIA	133	36
CONTRACT NO. 68874				
ILLINOIS FED. AID PROJECT				