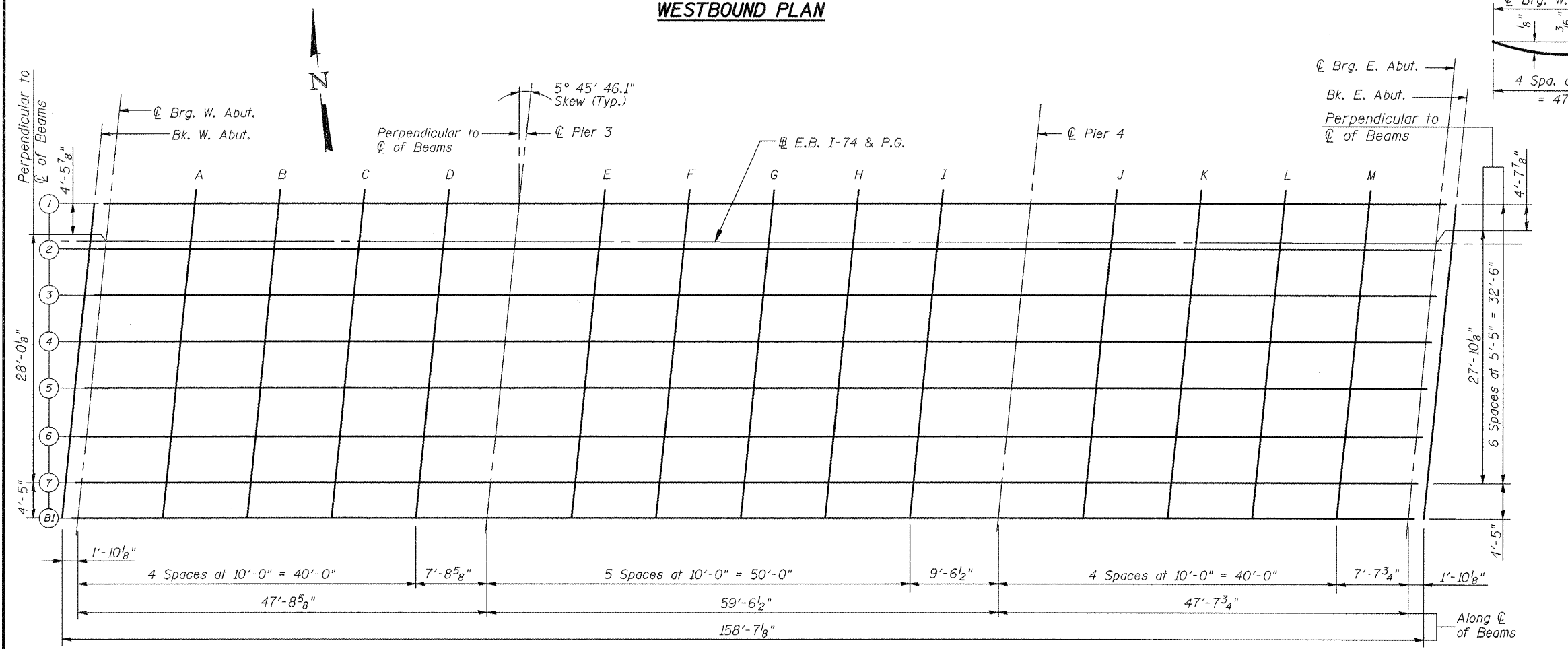
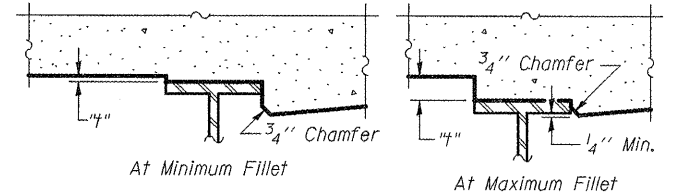


WESTBOUND PLAN

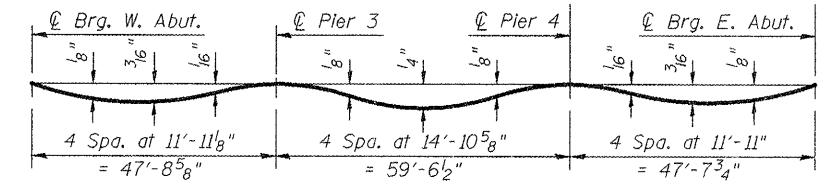


EASTBOUND PLAN



To determine "t": After all existing concrete deck has been removed and all structural steel has been erected, elevations of the top flanges of the beams shall be taken at intervals shown on this sheet. These elevations subtracted from the "Theoretical Grade Elevations Adjusted for Dead Load Deflection" shown on sheets 4 and 5 of 34, minus slab thickness, equals the fillet heights "t" above top flange of beams.

FILLET HEIGHTS



DEAD LOAD DEFLECTION DIAGRAM

(Includes weight of concrete only.)
(E.B. Shown, W.B. Similar)

Note:
The above deflections are not to be used in the field if the engineer is working from the grade elevations adjusted for dead load deflections as shown on sheets 4 and 5 of 34.



FILE NAME: 03 Top of Slab Elevations.dgn
PLOT SCALE: 1:1
PLOT DATE: July 1, 2011

DESIGNED: B. Vegrzyn	REVISED -
CHECKED: Coombe-Bloxdorf	REVISED -
DRAWN: B. Vegrzyn	REVISED -
CHECKED: Coombe-Bloxdorf	REVISED -

**STATE OF ILLINOIS
DEPARTMENT OF TRANSPORTATION**

**TOP OF SLAB ELEVATIONS
STRUCTURE NO. 072-0001 & 072-0002**

SHEET NO. 3 OF 34 SHEETS

F.A.I. RTE.	SECTION	COUNTY	TOTAL SHEETS	SHEET NO.
74	72-6VB	PEORIA	133	46
CONTRACT NO. 68874			ILLINOIS FED. AID PROJECT	