

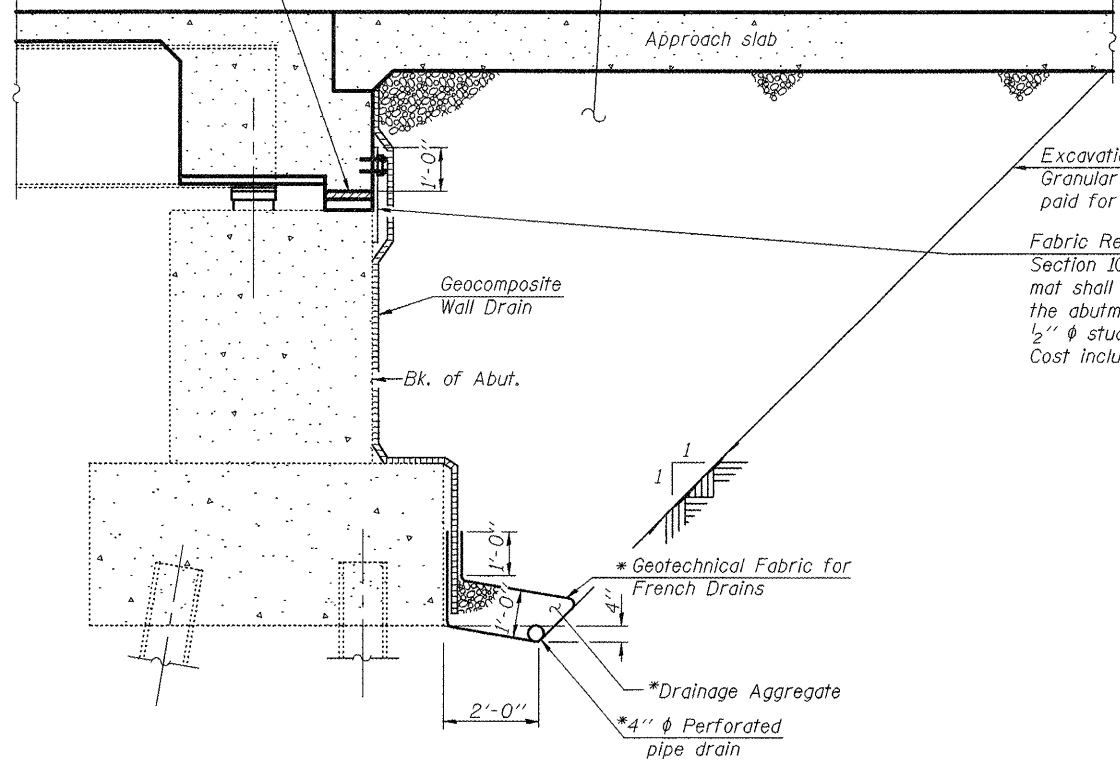
DIAPHRAGM ELEVATION AT WEST ABUTMENT (W.B.)

(W. Abut. (WB) and E. Abut. (EB) Shown.
W. Abut. (EB) and E. Abut. (WB) Opposite Hand)

MIN. BAR LAP
#6 Bar = 2'-7"

2" PJF (per Article 1051.08 of the Standard Specifications) full width and vertically at edges bonded to abutment cap with suitable adhesive as recommended by supplier. Cost included with Concrete Superstructure.

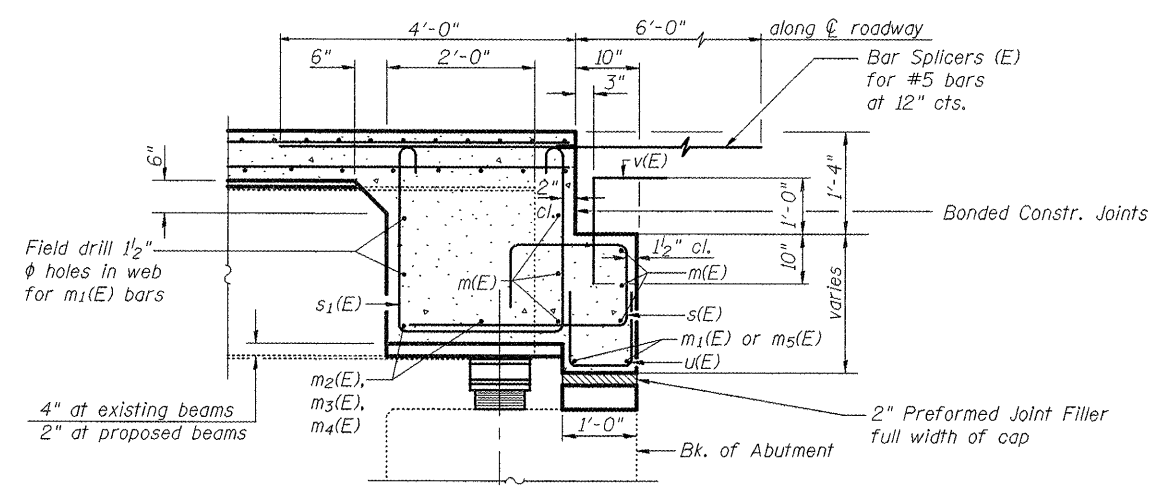
Backfill with Porous Granular Embankment (Special) by Bridge Contractor after superstructure is in place.



SECTION THRU SEMI-INTEGRAL ABUTMENT

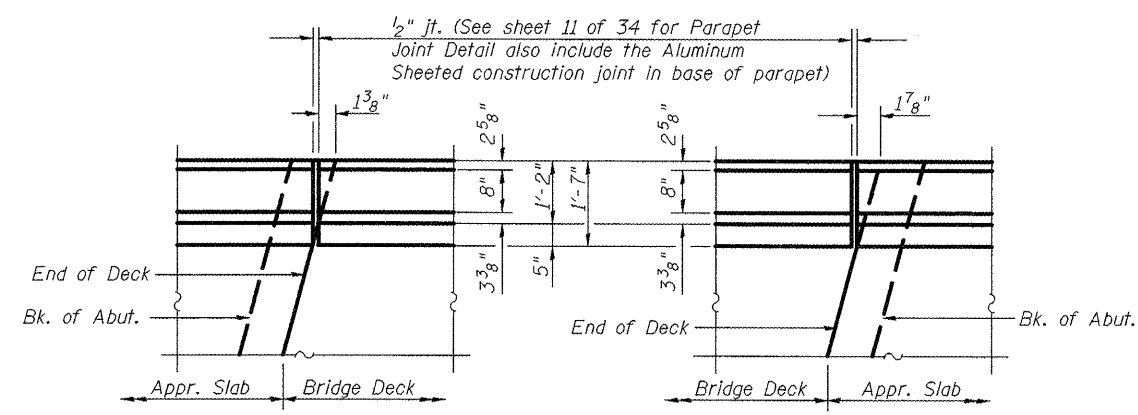
(Horiz. dim. @ Rt. L's)

*Included in the cost of Pipe Underdrains for Structures.
Note:
All drainage system components shall extend to 2'-0" from the end of each wingwall except an outlet pipe shall extend until intersecting with the side slopes. The pipes shall drain into concrete headwalls. (See Article 601.05 of the Standard Specifications and Highway Standard 601101).



SECTION A-A

(Dimensions at Rt. L's except as noted)

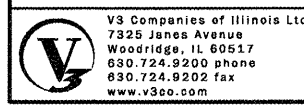


DETAIL A

DETAIL B

NOTES

Reinforcement bars in diaphragm are billed with superstructure on sheet 11 of 34.
Bars indicated thus 2x8-#6 etc. indicates 2 lines of bars with 8 lengths per line.
Concrete in diaphragm is included with Concrete Superstructure on sheet 11 of 34.
For details of bars s(E), s1(E) & u(E) see sheet 11 of 34.
The s(E) and s1(E) bars shall be placed parallel to the beams. Spacing for these bars shall be at right angles to the beams.
U.N.O. = Unless Noted Otherwise.
Existing steel end diaphragms to be cleaned and remain in place, but are not shown for clarity.



FILE NAME: 12 Diaphragm Details.dgn	DESIGNED: C. Burke	REVISED -
PLOT SCALE: 1:1	CHECKED: WJV/Coombe-Bloxdorf	REVISED -
PLOT DATE: July 1, 2011	DRAWN: C. Burke	REVISED -
	CHECKED: WJV/Coombe-Bloxdorf	REVISED -

**STATE OF ILLINOIS
DEPARTMENT OF TRANSPORTATION**

**DIAPHRAGM DETAILS
STRUCTURE NO. 072-0001 & 072-0002**

SHEET NO. 12 OF 34 SHEETS

F.A.I. RTE.	SECTION	COUNTY	TOTAL SHEETS	SHEET NO.
74	72-6VB	PEORIA	133	55
CONTRACT NO. 68874				
ILLINOIS FED. AID PROJECT				