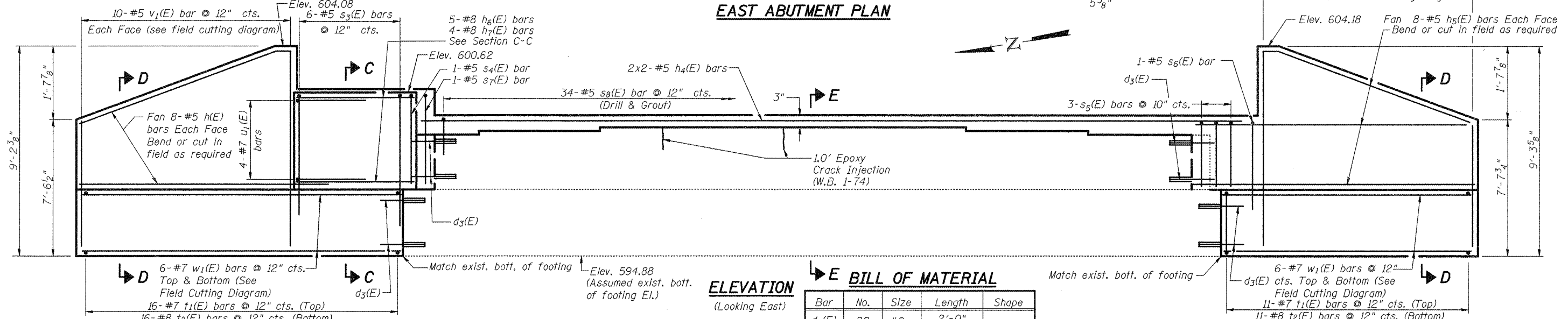


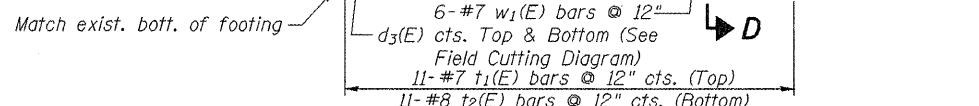
EAST ABUTMENT PLAN



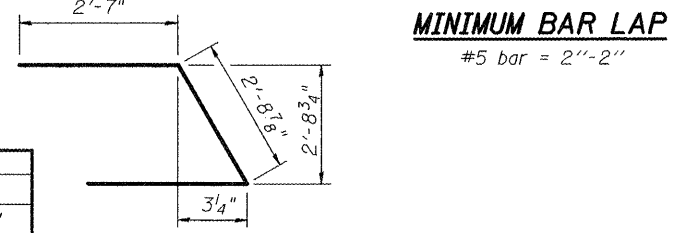
ELEVATION
(Looking East)

BILL OF MATERIAL

Bar	No.	Size	Length	Shape
d3(E)	28	#8	2'-0"	—
h(E)	16	#5	10'-10"	—
h4(E)	4	#5	20'-0"	—
h5(E)	16	#5	11'-9"	—
h6(E)	5	#8	6'-4"	—
h7(E)	4	#8	7'-4"	—
s3(E)	6	#5	13'-2"	≡
s4(E)	1	#5	8'-8"	≡
s5(E)	3	#5	4'-8"	≡
s6(E)	1	#5	9'-4"	≡
s7(E)	1	#5	6'-6"	≡
s8(E)	34	#5	2'-8"	≡
t1(E)	27	#7	5'-2"	—
t2(E)	27	#8	5'-2"	—
u1(E)	4	#7	7'-11"	≡
v1(E)	20	#5	15'-9"	—
w1(E)	12	#7	25'-10"	—



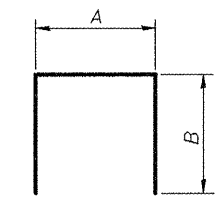
ANCHOR BOLTS LOCATION



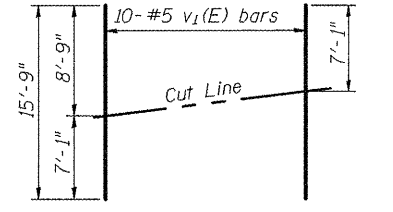
MINIMUM BAR LAP
#5 bar = 2'-2"

SOIL DATA
Allow. Brq. Pressure: 4500 psf
Max. Soil Pressure: 3500 psf

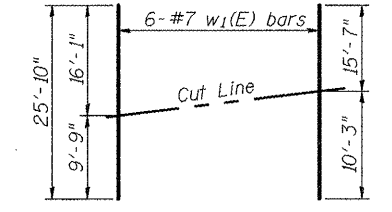
Bar	A	B
s3(E)	2'-10"	5'-2"
s4(E)	2'-10"	2'-11"
s5(E)	8"	2'-0"
s6(E)	8"	4'-4"
s7(E)	8"	2'-11"
s8(E)	8"	1'-0"



BARS s3(E) thru s8(E)



FIELD CUTTING DIAGRAM
Order v1(E) full length. Cut as shown and use remainder of bars in opposite face.

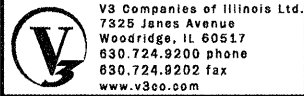


FIELD CUTTING DIAGRAM
Order w1(E) full length. Cut as shown and use remainder of bars in opposite footing.

NOTES

The cost of drilling and grouting d3(E) and s8(E) bars is included with Reinforcement Bars, Epoxy Coated. Installation as per Sec. 584 of the Standard Specifications. Min. depth of embedment will be 9 Inch.
See Sheet 24 of 34 for Sections A-A, B-B and E-E.
Bars indicated thus 2x2-#5 etc. indicates 2 lines of bars with 2 lengths per line.

Epoxy Crack Injection	Foot	2
Concrete Structures	Cu. Yd.	22.6
Reinforcement Bars, Epoxy Coated	Pound	2680
Structure Excavation	Cu. Yd.	136
Porous Granular Embankment, Special	Cu. Yd.	124



V3 Companies of Illinois Ltd.
7325 Janes Avenue
Woodridge, IL 60517
630.724.9200 phone
630.724.9202 fax
www.v3co.com

FILE NAME: 22 East Abutment Widening W.B.dgn
DESIGNED: B. Vegrzyn
CHECKED: Coombe-Bloxdorf
PLOT SCALE: 1/4"
PLOT DATE: July 1, 2011

REVISIONS:
REVISOR: -
CHECKED: -
DRAWN: B. Vegrzyn
CHECKED: Coombe-Bloxdorf

STATE OF ILLINOIS
DEPARTMENT OF TRANSPORTATION

EAST ABUTMENT WIDENING (WESTBOUND)
STRUCTURE NO. 072-0001 & 072-0002

SHEET NO. 22 OF 34 SHEETS

F.A.I. RTE.	SECTION	COUNTY	TOTAL SHEETS	SHEET NO.
74	72-6VB	PEORIA	133	65

CONTRACT NO. 68874
ILLINOIS FED. AID PROJECT