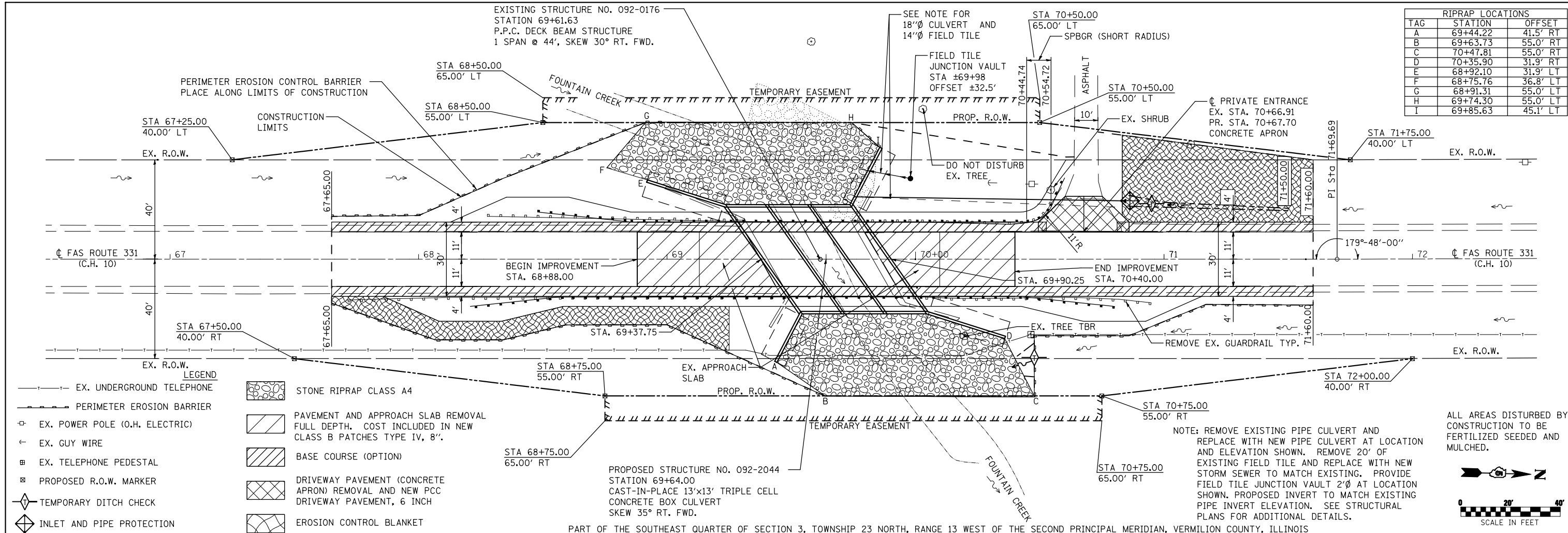
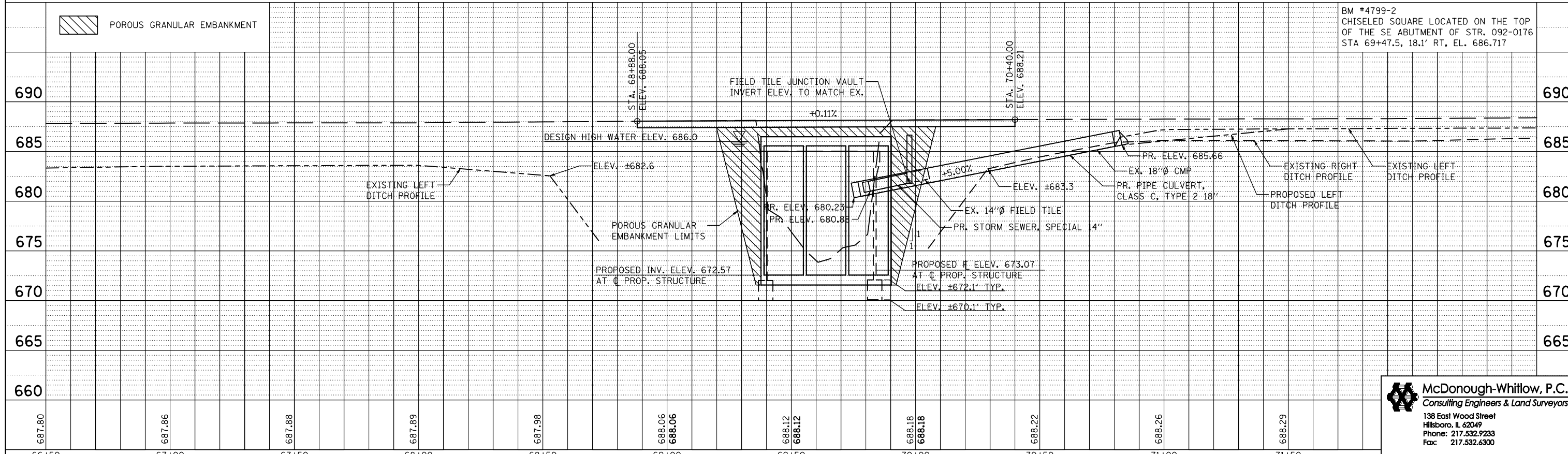


PLAN	SURVEYED	BY	DATE
	PLOTTED		
	CHECKED		
	ALIGNED		
	FILED		
	NO.		

PROFILE	SURVEYED	BY	DATE
	GRADES		
	CHECKED		
	STRUCTURE		
	NOTATION		
	CHNO		
	NO.		



RIPRAP LOCATIONS		
TAG	STATION	OFFSET
A	69+44.22	41.5' RT
B	69+63.73	55.0' RT
C	70+47.81	55.0' RT
D	70+35.90	31.9' RT
E	68+92.10	31.9' LT
F	68+75.76	36.8' LT
G	68+91.31	55.0' LT
H	69+74.30	55.0' LT
I	69+85.63	45.1' LT



FILE NAME = D570434-008-PLNPRF.dgn	USER NAME = RNH	DESIGNED - JMH	REVISED -	STATE OF ILLINOIS DEPARTMENT OF TRANSPORTATION	PLAN AND PROFILE	F.A.S. RTE. = 331	SECTION = (79-102)BR	COUNTY = VERMILION	TOTAL SHEETS = 29	SHEET NO. = 8	
PLOT SCALE =	CHECKED - TMM	REVISIED -	REVISIED -			SCALE: 1"=20'	SHEET NO. 1 OF 1 SHEETS	STA. 67+26.00 TO STA. 71+40.00	CONTRACT NO. 70434		
PLOT DATE =	DATE -	REVISIED -	REVISIED -			ILLINOIS FED. AID PROJECT					

McDonough-Whitlow, P.C.
Consulting Engineers & Land Surveyors
138 East Wood Street
Hillsboro, IL 62049
Phone: 217.532.9233
Fax: 217.532.6300