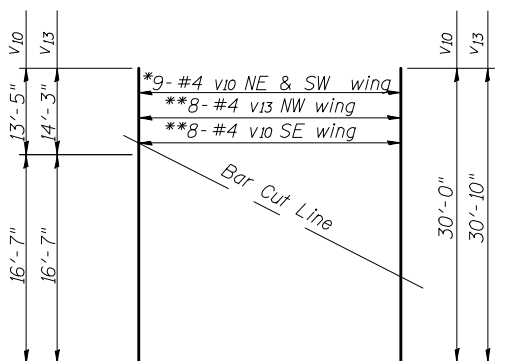
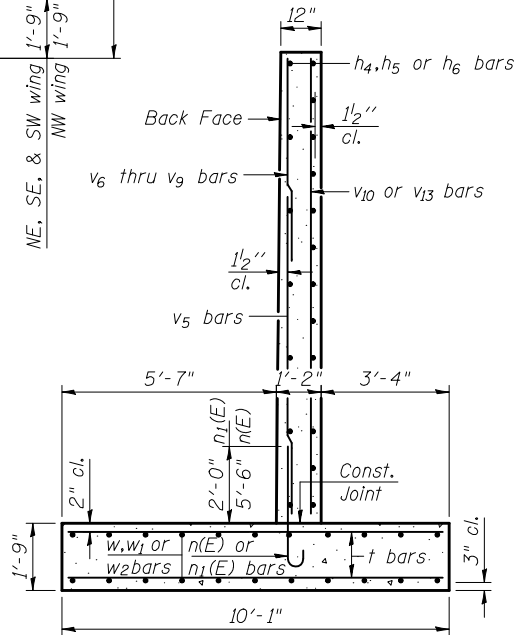


Maximum applied service bearing pressure, $Q_{max} = 3725$ psf

REINFORCEMENT BACK FACE

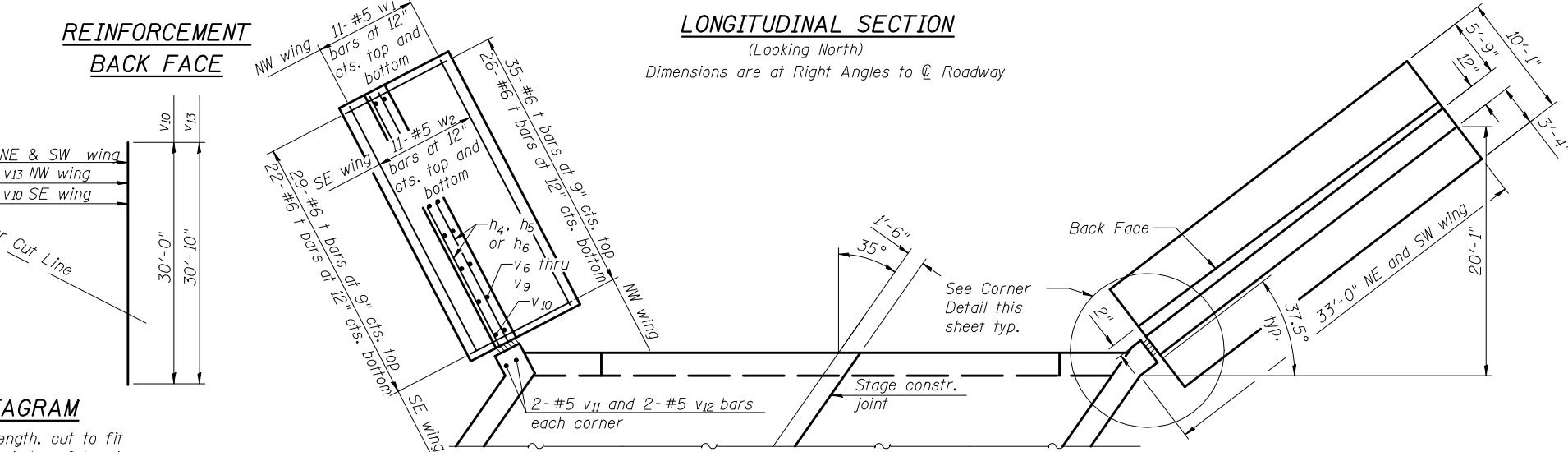
LONGITUDINAL SECTION
(Looking North)
Dimensions are at Right Angles to ϕ Roadway

REINFORCEMENT FRONT FACE



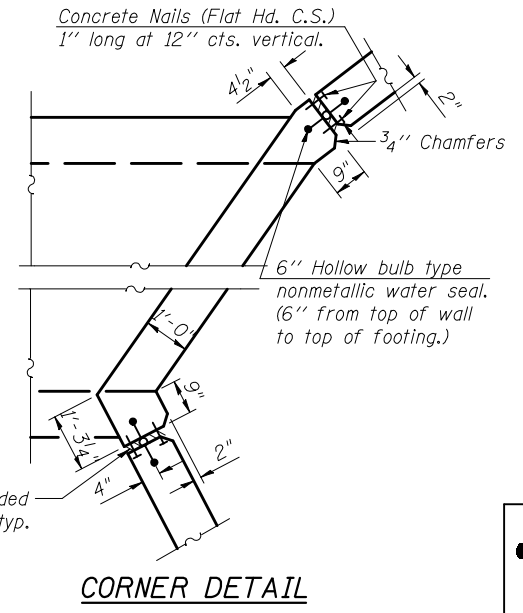
BAR CUT DIAGRAM

* Order v_{10} bars full length, cut to fit as shown and use remainder of bar in opposite wing.
** Order v_{10} and v_{13} bars full length, cut to fit as shown and use remainder of bar in opposite end of same wing.



PLAN WING WALLS

BARS $n(E)$ and $n_1(E)$



CORNER DETAIL

Notes:
See Sheets 4 and 5 of 9 for top and bottom slab reinforcement.
See Sheet 4 of 9 for Bill of Material.
See Sheet 4 of 9 for drain pipe details.

McDonough-Whitlow, P.C.
Consulting Engineers & Land Surveyors
138 East Wood Street
Hillsboro, IL 62049
Phone: 217.532.9233
Fax: 217.532.6300
PROFESSIONAL DESIGN NO. 184-002754

FILE NAME = 0922044-70434.dgn	USER NAME = RNH	DESIGNED - JMH	REVISD -	STATE OF ILLINOIS DEPARTMENT OF TRANSPORTATION	CULVERT DETAILS STRUCTURE NO. 092-2044	F.A.S. RTE. 331	SECTION (79-102)BR	COUNTY VERMILION	TOTAL SHEETS 29	SHEET NO. 17
PLOT SCALE =	DRAWN - RNH	REVISD -	CONTRACT NO. 70434							
PLOT DATE =	CHECKED - TMM	REVISD -	ILLINOIS FED. AID PROJECT							