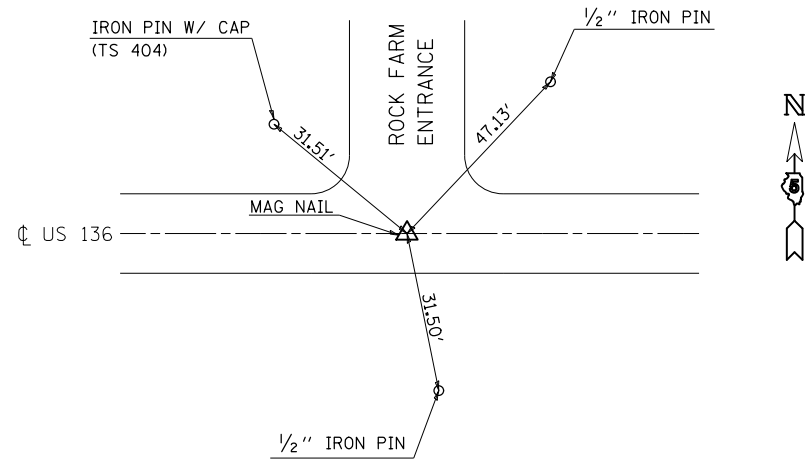
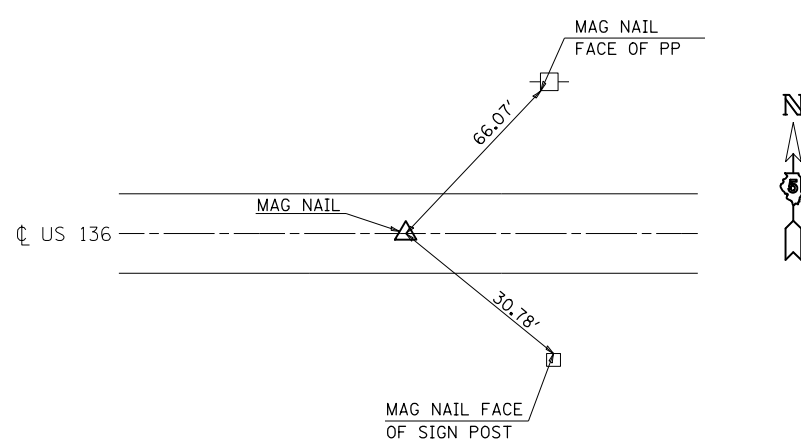


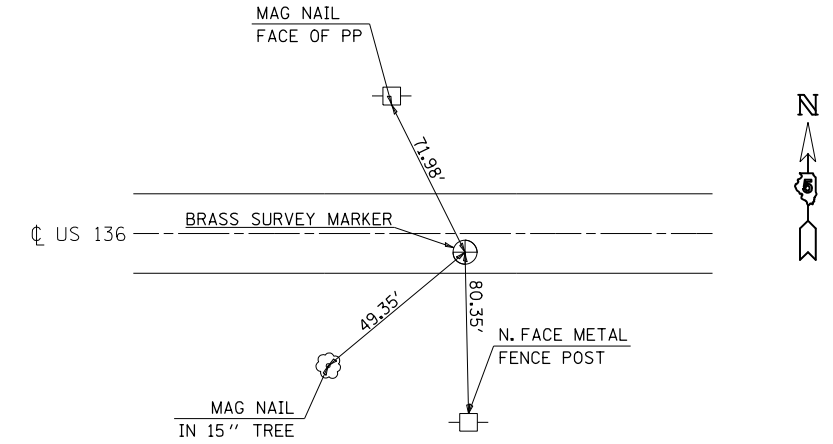
P.I. #4
STATION 393+81.44



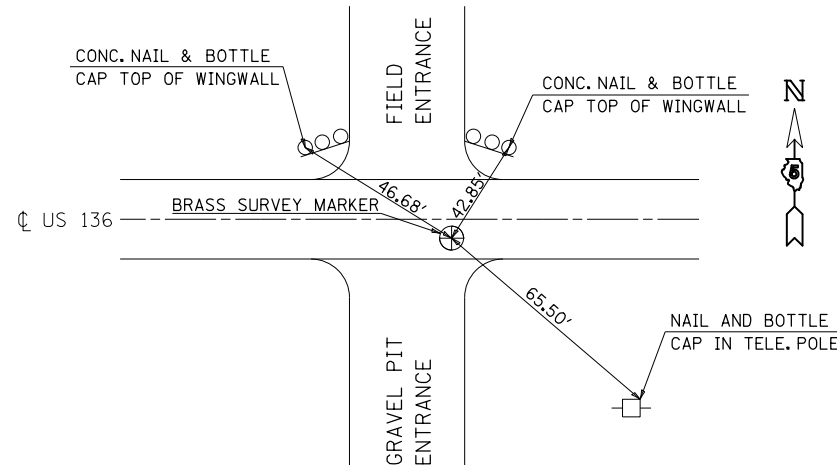
P.O.T. #14
STATION 418+19.81



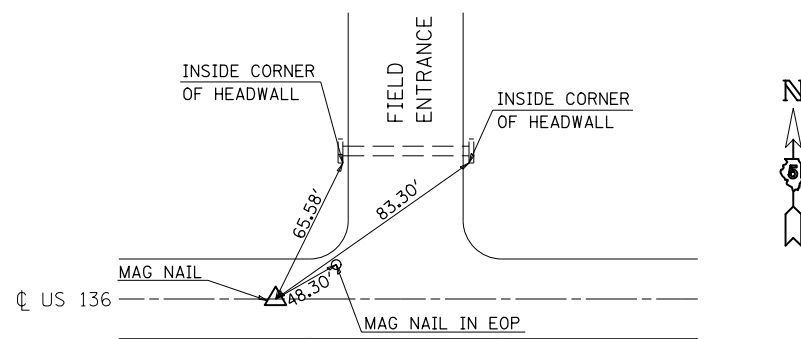
SECTION CORNER
N.E. COR. N.E. 1/4 SEC 6, T21N, R2E, 3RD PM
STATION 422+95.51 9.05' RT



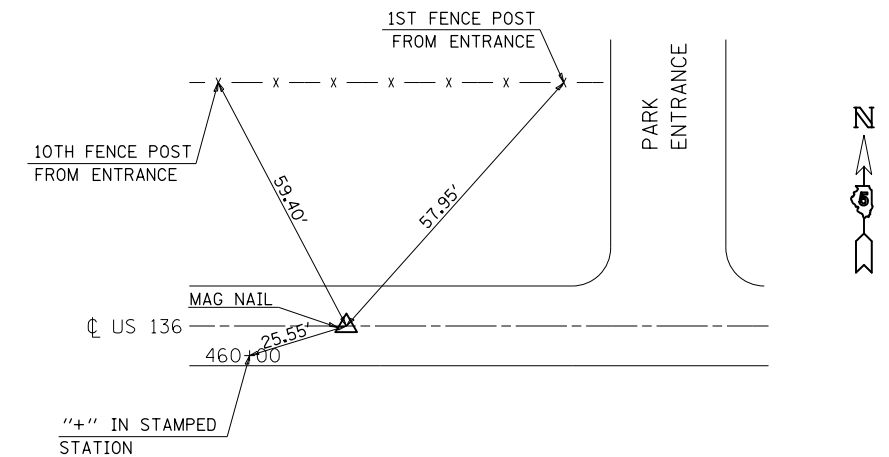
SECTION CORNER
S.E. COR. S.E. 1/4 SEC 31, T22N, R2E, 3RD PM
STATION 424+78.41 8.78' RT



P.I. KINK #46
STATION 436+54.04



P.O.T. #47
STATION 459+97.11



BENCHMARKS

- B. M. 4865-1 STA. 426+70.76, (21.13' RT.)
MCLEAN COUNTY
CHISELED SQUARE
TO REACH FROM THE INTERSECTION OF US 136 & US 51,
GO WEST ON US 136 FOR 1.3 MILES TO MARK ON THE LEFT.
SAID MARK IS A CHISELED SQUARE ON THE S.W. WINGWALL OF S.N. 057-0093.
ELEV. = 684.99
- B. M. 4865-2 STA. 429+62.04, (21.48' LT.)
MCLEAN COUNTY
CHISELED SQUARE
TO REACH FROM THE INTERSECTION OF US 136 & US 51,
GO WEST ON US 136 FOR 1.3 MILES TO MARK ON THE RIGHT.
SAID MARK IS A CHISELED SQUARE ON THE N.E. WINGWALL OF S.N. 057-0093.
ELEV. = 685.12

- B. M. 4865-3 STA. 442+27.01, (29.12' LT.)
MCLEAN COUNTY
CHISELED SQUARE
TO REACH FROM THE INTERSECTION OF US 136 & US 51,
GO WEST ON US 136 FOR 1.0 MILE TO MARK ON THE RIGHT.
SAID MARK IS A CHISELED SQUARE ON THE TOP OF THE NORTH END
OF AN AR BOX CULVERT.
ELEV. = 684.45
- B. M. 139 STA. 437+05.91, (40.46' LT.)
MCLEAN COUNTY
CHISELED SQUARE
TO REACH FROM THE INTERSECTION OF US 136 & US 51,
GO WEST ON US 136 FOR 1.1 MILES TO MARK ON THE RIGHT.
SAID MARK IS A CHISELED SQUARE ON THE S.W. HEADWALL OF F.E. CULVERT.
ELEV. = 682.57

FILE NAME =	USER NAME = hoganbj	DESIGNED - BJH 6/24/2011	REVISED - -	STATE OF ILLINOIS DEPARTMENT OF TRANSPORTATION	TIE POINTS AND BENCHMARKS			F.A.P. RTE.	SECTION	COUNTY	TOTAL SHEETS	SHEET NO.
et:\pw\work\p\dot\hoganbj\00142533\0570093\52-shr-ATB.dgn	DRAWN - BJH 6/24/2011	REVISED - -	315					121BR-2	MCLEAN	144	24	
PLOT SCALE = 40.0000' / in.	CHECKED -	REVISED - -	CONTRACT NO. 70552									
PLOT DATE = 8/22/2011	DATE -	REVISED - -	ILLINOIS FED. AID PROJECT									