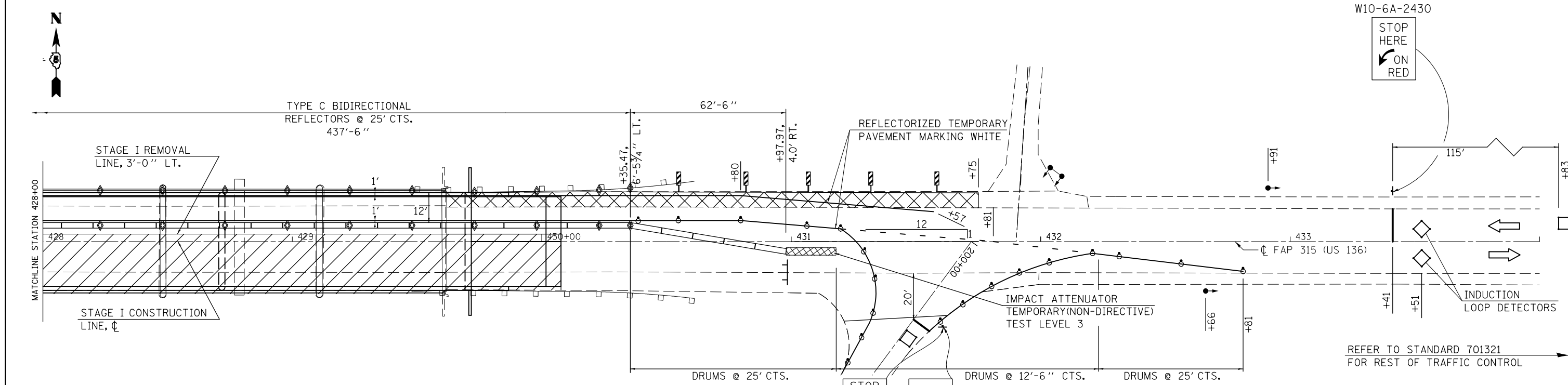
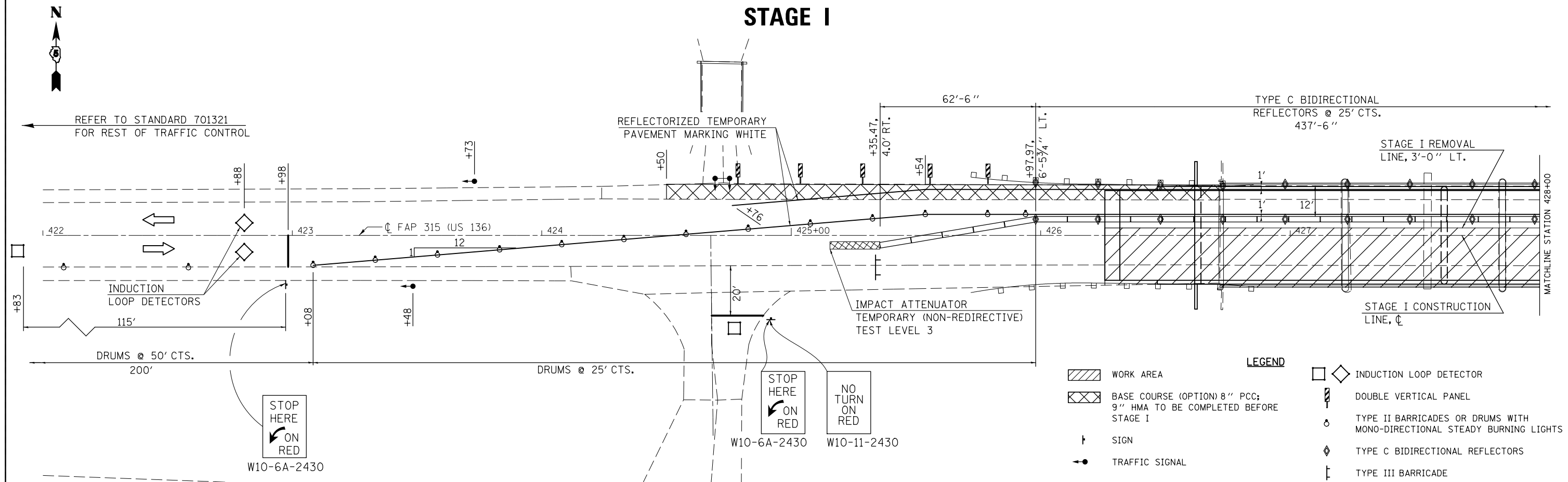


STAGE I



NOTES:
 PLACING, MAINTAINING AND REMOVING TEMPORARY PAVEMENT MARKINGS WILL NOT BE PAID FOR SEPARATELY BUT SHALL BE INCLUDED IN THE COST FOR TRAFFIC CONTROL AND PROTECTION STANDARD 701321.
 ALL TEMPORARY BRIDGE TRAFFIC SIGNALS FOR STAGE I & II WILL BE MEASURED AS 1 UNIT.

RCA AND SIGNAL AHEAD SIGNS SHALL BE PLACED AT ANY SIDEROAD LOCATED WITHIN THE MAINLINE TRAFFIC CONTROL SIGNING LIMITS. THE LOCATIONS TO BE DETERMINED BY THE ENGINEER. THESE SIGNS WILL NOT BE MEASURED FOR PAYMENT, BUT WILL BE INCLUDED IN THE VARIOUS TRAFFIC CONTROL ITEMS.

FILE NAME =	USER NAME = hoganbj	DESIGNED - BJH/BJM	REVISED - _____
c:\pwwork\pwwork\hoganbj\d0142533\0570652-sht-details.CEL		DRAWN - 5/5/2011	REVISED - _____
PLOT SCALE = 40.0000' / in.		CHECKED - _____	REVISED - _____
PLOT DATE = 8/22/2011		DATE - _____	REVISED - _____

**STATE OF ILLINOIS
 DEPARTMENT OF TRANSPORTATION**

**TRAFFIC CONTROL & PROTECTION STAGE I
 F.A.P. ROUTE 315 (U.S. ROUTE 136)**

SCALE: _____ SHEET NO. 1 OF 1 SHEETS STA. _____ TO STA. _____

F.A.P. RTE.	SECTION	COUNTY	TOTAL SHEETS	SHEET NO.
315	121BR-2	MCLEAN	144	31
CONTRACT NO. 70552				
ILLINOIS FED. AID PROJECT				